

## FEATURES AND SPECIFICATIONS

### Intended Use

Specification grade, low profile troffer meets an almost limitless range of applications where energy efficiency, high light output, durable construction and unobtrusive styling is desired. Troffer is ideal for all commercial and industrial buildings requiring general illumination with recessed configurations. LED version is ideal where maintenance, energy savings and color rendering are particularly crucial.

### Features Overview

The 131 Series LED Troffers feature a choice of LED arrays and drivers to meet a range of full distribution output and wattage choices. With the 131 LED Series, flexibility is a key feature. No longer need to sacrifice output, color or energy usage with this series, you can specify exactly what you need. Choice of four color temperatures. Choice of dimming driver with 0 to 10 Volt operation. Full selection of diffusers available along with other options.

### Shielding

Standard lens is high transmission pattern #12 acrylic (A12) for light diffusion which maximize light output. Other lens are available and may be specified. See below options.

### Size W x L x H in inches

23.75W x 48.0L x 4.0Dp

### LED Engine

Programmable Driver changes LED Array output to provide different outputs.

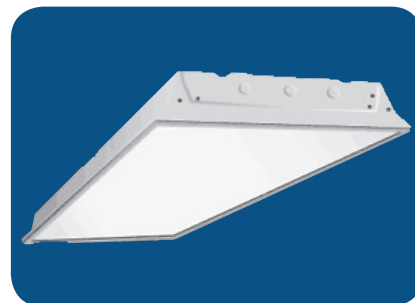
### Materials & Features

Housing is die-formed and embossed code 22 gage steel. Finish is high reflectance baked white enamel. Wiring knockouts are provided on back and end of housing. Driver cover or reflector snaps into place; no tools required for ballast access. Lens is held with a hinged steel door frame; frame hinges downward on either side and is held closed by two positive cam latched.

- POST PAINTED POWDER COAT FINISH on certain versions
- Shallow design for low clearance plenums
- Clear 0.10thk A12 acrylic lens is standard; many options available
- Flush steel hinges from either side; field reversible
- Access plate to simplify installation

# 131 2' x 4'

## LED Lensed Troffer, Grid Mount



### Mounting & Installation

An access plate is furnished with each recessed fixture for fast wiring connections without necessity to pen the fixture or wireway. Designed for recessed installation in standard inverted tee grid ceiling, recessed installation in hard ceilings with FIK kits (sold separately), surface mount available with shroud kit (sold as complete item).

### Warranty

Five Year Warranty. See Terms and Conditions.

### Typical Options and Accessories

Emergency battery backup, whips, regressed doors, wire guards, frame kits, and lenses. See options page at the end on the T02Grid section, or contact factory for more details.



## ORDERING INFORMATION

Example: 131A24LF35W3650LDMV40K

### STANDARD

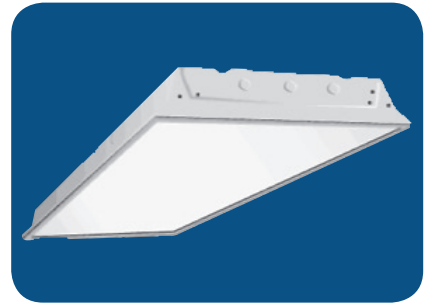
131	A	24L	F35W3650L	DMV	40K
Series		Size	Wattage and Lumen	Driver	Color Temperature
131 LED Lensed Troffer, Grid Mount		24L 2 x 4	<b>F35W3650L</b> 35 System Watts, 3650 Delivered Lumens <b>F45W5500L</b> 45 System Watts, 5500 Delivered Lumens <b>F48W4800L</b> 48 System Watts, 4800 Delivered Lumens <b>F56W6050L</b> 56 System Watts, 6050 Delivered Lumens	DMV 0-10V Dimming	<b>30K</b> 3000K <b>35K</b> 3500K <b>40K</b> 4000K <b>50K</b> 5000K
<b>Lens Material</b>			<b>Options</b>		
A	Prismatic Acrylic #12 Pattern		WP 6 ft. 3 wire 18 gauge whip		
A.125	Prismatic Acrylic #12 Pattern 1/8"		WP10 6 ft. 4 wire 18 gauge whip		
MW	Matte White Acrylic		EM 10W Battery Backup for 90mins		
SP1	Specular Parabolic Louver 1/2" x 1/2" x 3/8"				
SP4	Specular Parabolic Louver 3/4" x 3/4" x 1/2"				
SP2	Specular Parabolic Louver 1 1/2" x 1 1/2" x 1"				
PLA	White Cubed Acrylic Louver 1/2" x 1/2" x 3/8"				
FR	Frosted Acrylic Smooth Lens .04", 100% Dura Frost				
			<b>Value Line</b>		
			V46Y 5500N 46 System Watts, 5500 Delivered Lumens		

\*Consult for more options

Catalog Number:
Notes:

# 131 2' x 4'

## LED Lensed Troffer, Grid Mount



### ORDERING INFORMATION

#### HIGH OUTPUT

Example: **131A24LH72W8700LDMV40K**

<b>131</b>	<b>A</b>	<b>24L</b>	<b>H72W8700L</b>	<b>DMV</b>	<b>40K</b>								
<b>Series</b>		<b>Size</b>	<b>Wattage and Lumen</b>	<b>Driver</b>	<b>Color Temperature</b>								
<b>131</b> LED Lensed Troffer, Grid Mount		<b>24L</b> 2 x 4	<b>H72W8700L</b> 72 System Watts, 8700 Delivered Lumens	<b>DMV</b> 0-10V Dimming	<table border="1"> <tr><td><b>30K</b></td><td>3000K</td></tr> <tr><td><b>35K</b></td><td>3500K</td></tr> <tr><td><b>40K</b></td><td>4000K</td></tr> <tr><td><b>50K</b></td><td>5000K</td></tr> </table>	<b>30K</b>	3000K	<b>35K</b>	3500K	<b>40K</b>	4000K	<b>50K</b>	5000K
<b>30K</b>	3000K												
<b>35K</b>	3500K												
<b>40K</b>	4000K												
<b>50K</b>	5000K												
<b>Lens Material</b>					<b>Options</b>								
<b>A</b>	Prismatic Acrylic #12 Pattern				<table border="1"> <tr><td><b>WP</b></td><td>6 ft. 3 wire 18 gauge whip</td></tr> <tr><td><b>WP10</b></td><td>6 ft. 4 wire 18 gauge whip</td></tr> <tr><td><b>EM</b></td><td>10W Battery Backup for 90mins</td></tr> </table>	<b>WP</b>	6 ft. 3 wire 18 gauge whip	<b>WP10</b>	6 ft. 4 wire 18 gauge whip	<b>EM</b>	10W Battery Backup for 90mins		
<b>WP</b>	6 ft. 3 wire 18 gauge whip												
<b>WP10</b>	6 ft. 4 wire 18 gauge whip												
<b>EM</b>	10W Battery Backup for 90mins												
<b>A.125</b>	Prismatic Acrylic #12 Pattern 1/8"												
<b>MW</b>	Matte White Acrylic												
<b>SP1</b>	Specular Parabolic Louver 1/2" x 1/2" x 3/8"												
<b>SP4</b>	Specular Parabolic Louver 3/4" x 3/4" x 1/2"												
<b>SP2</b>	Specular Parabolic Louver 1 1/2" x 1 1/2" x 1"												
<b>PLA</b>	White Cubed Acrylic Louver 1/2" x 1/2" x 3/8"												
<b>FR</b>	Frosted Acrylic Smooth Lens .04", 100% Dura Frost												

\*Consult for more options

Catalog Number:
Notes:



**Texas Fluorescents**  
Reinvented

# 131 2' x 2'

## LED Lensed Troffer, Grid Mount



### FEATURES AND SPECIFICATIONS

#### Intended Use

Specification grade, low profile troffer meets an almost limitless range of applications where energy efficiency, high light output, durable construction and unobtrusive styling is desired. Troffer is ideal for all commercial and industrial buildings requiring general illumination with recessed configurations. LED version is ideal where maintenance, energy savings and color rendering are particularly crucial.

#### Features Overview

The 131 Series LED Troffers feature a choice of LED arrays and drivers to meet a range of full distribution output and wattage choices. With the 131 LED Series, flexibility is a key feature. No longer need to sacrifice output, color or energy usage with this series, you can specify exactly what you need. Choice of four color temperatures. Choice of dimming driver with 0 to 10 Volt operation. Full selection of diffusers available along with other options.

#### Shielding

Standard lens is high transmission pattern #12 acrylic (A12) for light diffusion which maximize light output. Other lens are available and may be specified. See below options.

#### Size W x L x H in inches

23.75W x 24.0L x 4.0Dp

#### LED Engine

Programmable Driver changes LED Array output to provide different outputs.

#### Materials & Features

Housing is die-formed and embossed code 22 gage steel. Finish is high reflectance baked white enamel. Wiring knockouts are provided on back and end of housing. Driver cover or reflector snaps into place; no tools required for ballast access. Lens is held with a hinged steel door frame; frame hinges downward on either side and is held closed by two positive cam latched.

- POST PAINTED POWDER COAT FINISH on certain versions
- Shallow design for low clearance plenums
- Clear 0.10thk A12 acrylic lens is standard; many options available
- Flush steel hinges from either side; field reversible
- Access plate to simplify installation

#### Mounting & Installation

An access plate is furnished with each recessed fixture for fast wiring connections without necessity to pen the fixture or wireway. Designed for recessed installation in standard inverted tee grid ceiling, recessed installation in hard ceilings with FIK kits (sold separately), surface mount available with shroud kit (sold as complete item).

#### Warranty

Five Year Warranty. See Terms and Conditions.

#### Typical Options and Accessories

Emergency battery backup, whips, regressed doors, wire guards, frame kits, and lenses. See options page at the end on the T02Grid section, or contact factory for more details.

### ORDERING INFORMATION

Example: **131A22LF28W2700LDMV40K**

#### STANDARD

131		A		22L		F28W2700L		DMV		40K	
Series		Lens Material		Size		Wattage and Lumen		Driver		Kelvin Temperature	
131		A		22L 2 x 2		F20W2300L		DMV 0-10V Dimming		30K 3000K	
LED Lensed Troffer, Grid Mount		A.125 Prismatic Acrylic #12 Pattern 1/8"				F24W2600L				35K 3500K	
		MW Matte White Acrylic				F28W3000L				40K 4000K	
		SP1 Specular Parabolic Louver 1/2" x 1/2" x 3/8"				F35W3600L				50K 5000K	
		SP4 Specular Parabolic Louver 3/4" x 3/4" x 1/2"				F45W4500L					
		SP2 Specular Parabolic Louver 1 1/2" x 1 1/2" x 1"									
		PLA White Cubed Acrylic Louver 1/2" x 1/2" x 3/8"									
		FR Frosted Acrylic Smooth Lens .04", 100% Dura Frost									
										<b>Options</b>	
										WP 6 ft. 3 wire 18 gauge whip	
										WP10 6 ft. 4 wire 18 gauge whip	
										EM 10W Battery Backup for 90mins	

\*Consult for more options



Saylite  
2055 Luna Rd. Suite 142 Carrollton, TX 75006  
Phone: 972-247-3171 Fax: 972-247-0200  
www.saylite.com email: sales@saylite.com

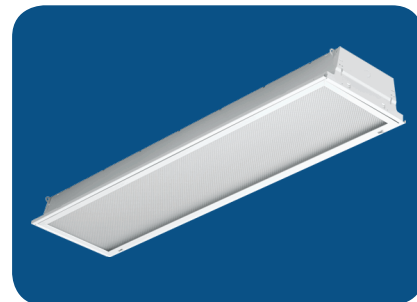
Catalog Number:
Notes:



Texas Fluorescents  
Reinvented

# 131 1' x 4'

## LED Lensed Troffer, Grid Mount



### FEATURES AND SPECIFICATIONS

#### Intended Use

Specification grade, low profile troffer meets an almost limitless range of applications where energy efficiency, high light output, durable construction and unobtrusive styling is desired. Troffer is ideal for all commercial and industrial buildings requiring general illumination with recessed configurations. LED version is ideal where maintenance, energy savings and color rendering are particularly crucial.

#### Features Overview

The 131 Series LED Troffers feature a choice of LED arrays and drivers to meet a range of full distribution output and wattage choices. With the 131 LED Series, flexibility is a key feature. No longer need to sacrifice output, color or energy usage with this series, you can specify exactly what you need. Choice of four color temperatures. Choice of dimming driver with 0 to 10 Volt operation. Full selection of diffusers available along with other options.

#### Shielding

Standard lens is high transmission pattern #12 acrylic (A12) for light diffusion which maximize light output. Other lens are available and may be specified. See below options.

Size W x L x H in inches

11.75W x 48.0L x 4.0Dp

#### LED Engine

Programmable Driver changes LED Array output to provide different outputs.

#### Materials & Features

Housing is die-formed and embossed code 22 gage steel. Finish is high reflectance baked white enamel. Wiring knockouts are provided on back and end of housing. Driver cover or reflector snaps into place; no tools required for ballast access. Lens is held with a hinged steel door frame; frame hinges downward on either side and is held closed by two positive cam latched.

- POST PAINTED POWDER COAT FINISH on certain versions
- Shallow design for low clearance plenums
- Clear 0.10thk A12 acrylic lens is standard; many options available
- Flush steel hinges from either side; field reversible
- Access plate to simplify installation

#### Mounting & Installation

An access plate is furnished with each recessed fixture for fast wiring connections without necessity to pen the fixture or wireway. Designed for recessed installation in standard inverted tee grid ceiling, recessed installation in hard ceilings with FIK kits (sold separately), surface mount available with shroud kit (sold as complete item).

#### Warranty

Five Year Warranty. See Terms and Conditions.

#### Typical Options and Accessories

Emergency battery backup, whips, regressed doors, wire guards, frame kits, and lenses. See options page at the end on the T02Grid section, or contact factory for more details.

### ORDERING INFORMATION

Example: 131A14LF32W3450LDMV40K

#### STANDARD

131	A	14L	F32W3450L	DMV	40K
<b>Series</b>		<b>Size</b>	<b>Wattage and Lumen</b>	<b>Driver</b>	<b>Kelvin Temperature</b>
131 LED Lensed Troffer, Grid Mount		14L 1 x 4	<b>F22W2800L</b> 22 System Watts 2800 Delivered Lumens <b>F30W3600L</b> 30 System Watts, 3600 Delivered Lumens <b>F35W4100L</b> 35 System Watts, 4100 Delivered Lumens <b>F40W4600L</b> 40 System Watts, 4600 Delivered Lumens <b>F48W5400L</b> 48 System Watts, 5400 Delivered Lumens <b>F57W6400L</b> 57 System Watts, 6400 Delivered Lumens	DMV 0-10V Dimming	<b>30K</b> 3000K <b>35K</b> 3500K <b>40K</b> 4000K <b>50K</b> 5000K
<b>Lens Material</b>			<b>Value Line</b>	<b>Options</b>	
A	Prismatic Acrylic #12 Pattern		<b>V46Y 5500N</b> 46 System Watts, 5500 Delivered Lumens	<b>WP</b> 6 ft. 3 wire 18 gauge whip	
A.125	Prismatic Acrylic #12 Pattern 1/8"			<b>WP10</b> 6 ft. 4 wire 18 gauge whip	
MW	Matte White Acrylic			<b>EM</b> 10W Battery Backup for 90mins	
SP1	Specular Parabolic Louver 1/2" x 1/2" x 3/8"				
SP4	Specular Parabolic Louver 3/4" x 3/4" x 1/2"				
SP2	Specular Parabolic Louver 1 1/2" x 1 1/2" x 1"				
PLA	White Cubed Acrylic Louver 1/2" x 1/2" x 3/8"				
FR	Frosted Acrylic Smooth Lens .04", 100% Dura Frost				

\*Consult for more options

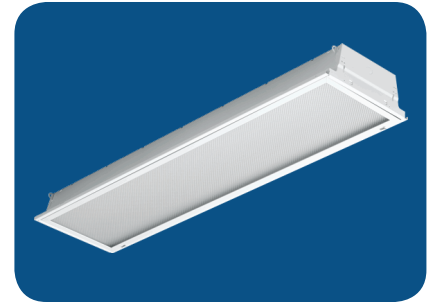


Saylite  
2055 Luna Rd. Suite 142 Carrollton, TX 75006  
Phone: 972-247-3171 Fax: 972-247-0200  
www.saylite.com email: sales@saylite.com

Catalog Number:
Notes:

# 131 1' x 4'

LED Lensed Troffer, Grid Mount



## ORDERING INFORMATION

### HIGH OUTPUT

Example: 131A14LH72W8400LDMV40K

131	A	14L	H72W8400L	DMV	40K
<b>Series</b>		<b>Size</b>	<b>Wattage and Lumen</b>	<b>Driver</b>	<b>Kelvin Temperature</b>
131 LED Lensed Troffer, Grid Mount		14L 1 x 4	H72W8400L 72 System Watts, 8400 Delivered Lumens	DMV 0-10V Dimming	30K 3000K 35K 3500K 40K 4000K 50K 5000K
<b>Lens Material</b>					
A	Prismatic Acrylic #12 Pattern				
A.125	Prismatic Acrylic #12 Pattern 1/8"				
MW	Matte White Acrylic				
SP1	Specular Parabolic Louver 1/2" x 1/2" x 3/8"				
SP4	Specular Parabolic Louver 3/4" x 3/4" x 1/2"				
SP2	Specular Parabolic Louver 1 1/2" x 1 1/2" x 1"				
PLA	White Cubed Acrylic Louver 1/2" x 1/2" x 3/8"				
FR	Frosted Acrylic Smooth Lens .04", 100% Dura Frost				
<b>Options</b>					
WP	6 ft. 3 wire 18 gauge whip				
WP10	6 ft. 4 wire 18 gauge whip				
EM	10W Battery Backup for 90mins				

\*Consult for more options



Catalog Number:
Notes: