

## FEATURES & SPECIFICATIONS

### INTENDED USE

Specification grade, modular linear lighting luminaire in a geometric 6 inch shape. For use in indoor applications where individual or continuous lighting is desired for general or perimeter lighting applications. The 66 series is available in surface, pendant (suspended), or recessed (see matching wall series). Recessed 66 series are available for T Bar installation without a flange or for flanged construction for sheetrock installation. Pendant and surface mount configurations allow direct light only, indirect light only or direct light with uplight through slots. Pendant mounted fixtures can be used with cable kits or rigid stem kits specified separately. Surface and pendant fixtures can be painted in a variety of finishes for the right look for your application.

### SIZE W x L X H in inches

6.0W x 6.0H (See Dimensions)

### MATERIALS & FEATURES

Housing is die-formed and welded of heavy gauge cold rolled steel. Knockouts on the ends allow continuous wireway mounting. Fixtures can be hung in various types of recessed ceilings. Leveling lugs are available to support regular recess units.

### FINISH

All metal parts are cleaned and treated with a three-stage phosphate coating. These are electrostatically sprayed with a high quality white baking enamel providing a minimum of 87% reflectivity.



### DIFFUSERS

Various lenses lie on the side flanges of the fixture. Six and eight foot units have a steel mullion to join two individual diffusers. A baffled louver is available to shield glare.

### TYPICAL OPTIONS AND ACCESSORIES

Emergency ballasts, Cord sets, whips, occupancy sensors, Hanging kits, Wire guards, Contact factory for additional options.

## ORDERING INFORMATION

### 4 FT-UP and DOWN LIGHT (not available in recessed)

Example: 66WMW48LUR12WD24WDMV40KWH

<b>66W</b>	<b>MW</b>	<b>48L</b>	<b>UR12WD24W</b>	<b>DMV</b>	<b>40K</b>	<b>WH</b>	
<b>Series</b>		<b>Length</b>			<b>Color Temperature</b>	<b>Finishes</b>	<b>Configuration</b>
66W Wall Mounted 66P Pendant Mounted		48L 48"			30K 3000K 35K 3500K 40K 4000K 50K 5000K	Blank For Recessed WH Matte White SL Silver BK Matte Black BZ Bronze	Blank Individual -B Beginner Run -E Ender Run -J Joiner
<b>Lens Material</b>				<b>Driver</b>			
SP1 Specular Parabolic Louver PLA White Cubed Acrylic Louver A Prismatic Acrylic #12 pattern MW Matte White Lens BL Baffled Louver Special for LEDs, Only available for uplight and downlight SF Snap In Frosted Acrylic Lens (85% transmission) *Special for LEDs				DMV 0-10V Dimming *Field installed-Dimming Wire DMVFID 0-10V Dimming *Factory installed-Dimming Wire			
	<b>Wattage &amp; Lumen</b>				<b>Options</b>		
	UR12WD24W	Up Light 12 System Watts, Down Light 24 System Watts, 3600 Delivered Lumens			HC401WH HC402WH HC4015WWH HC4025WWH 2SCS24WH	Cable kit with 4' Cable & 3 Wires Power Feed/Cable Incl. and White Canopy Cable kit with 12' Cable & 3 Wires Power feed/Cable Incl. and White Canopy Cable kit with 4' Cable & 5 Wires Power Feed/Cable Incl. and White Canopy Cable kit with 12' Cable & 5 Wires Power feed/Cable Incl. and White Canopy Two Stem kits with 24" Stem, Canopy and Mounting hardware for a 4' fixture	
	UR18WD36W	Up Light 18 System Watts, Down Light 36 System Watts, 5400 Delivered Lumens					

Notes \*Custom length available and Custom louvers available in any cell configuration.

\*66R-Designed for standard 1" grid. Consult factory for custom made grid size.



## ORDERING INFORMATION

**4 FT-UP LIGHT ONLY or DOWN LIGHT ONLY** (not available in recessed)

Example: 66RMW48LR24W2400LDMV40KWH

66R	MW	48L	R24W2400L	DMV	40K	WH	
<b>Series</b>		<b>Length</b>			<b>Color Temperature</b>	<b>Finishes</b>	<b>Configuration</b>
<b>66R</b> Recessed Mounted		48L 48"			<b>30K</b> 3000K <b>35K</b> 3500K <b>40K</b> 4000K <b>50K</b> 5000K	<b>Blank</b> For Recessed <b>WH</b> Matte White <b>SL</b> Silver <b>BK</b> Matte Black <b>BZ</b> Bronze	<b>Blank</b> Individual <b>-B</b> Beginner Run <b>-E</b> Ender Run <b>-J</b> Joiner
<b>66RW</b> Recessed Wall Washer							
<b>66RR</b> Recessed Mounted							
<b>66RRPF</b> Recessed Mounted with Proforated Flange							
<b>66RW</b> Recessed Wall Washer							
<b>66RF</b> Recessed Mounted							
<b>66RFW</b> Recessed Wall Washer							
<b>66W</b> Wall Mount							
<b>66WW</b> Wall Mount Wall Wash							
<b>66P</b> Pendant Mount Direct Only							
<b>66PW</b> Pendant Mount Wall Wash Direct Only							
			<b>Wattage &amp; Lumen</b>		<b>Driver</b>		
			<b>R24W2400L</b> 24 System Watts, 2400 Delivered Lumens	<b>DMV</b> 0-10V Dimming *Field installed-Dimming Wire			
			<b>R48W4800L</b> 48 System Watts, 4800 Delivered Lumens	<b>DMVFID</b> 0-10V Dimming *Factory installed-Dimming Wire			
						<b>Options</b>	
						<b>HC401WH</b> Cable kit with 4' Cable & 3 Wires Power Feed/Cable Incl. and White Canopy	
						<b>HC402WH</b> Cable kit with 12' Cable & 3 Wires Power Feed/Cable Incl. and White Canopy	
						<b>HC4015WWH</b> Cable kit with 4' Cable & 5 Wires Power Feed/Cable Incl. and White Canopy	
						<b>HC4025WWH</b> Cable kit with 12' Cable & 5 Wires Power Feed/Cable Incl. and White Canopy	
						<b>2SCS24WH</b> Two Stem kits with 24" Stem, Canopy and Mounting hardware for a 4' fixture	
			<b>Lens Material</b>				
			<b>SP1</b> Specular Parabolic Louver				
			<b>PLA</b> White Cubed Acrylic Louver				
			<b>A</b> Prismatic Acrylic #12 pattern				
			<b>MW</b> Matte White Lens				
			<b>BL</b> Baffled louver Special for LEDs, Only available for uplight and downlight				
			<b>SF</b> Snap In Frosted Acrylic Lens (85% transmission) *Special for LEDs				

**Notes** \*Custom length available and Custom louvers available in any cell configuration.

\*66R-Designed for standard 1" grid. Consult factory for custom made grid size.

Catalog Number:
Notes:



## ORDERING INFORMATION

### 8 FT-UP and DOWN LIGHT

Example: 66WMW96LUR24WD48WDMV40KWH

66W	MW	96L	UR24WD48W	DMV	40K	WH	
<b>Series</b>		<b>Length</b>			<b>Color Temperature</b>	<b>Finishes</b>	<b>Configuration</b>
66W Wall Mounted 66P Pendant Mounted		96L 96"			30K 3000K 35K 3500K 40K 4000K 50K 5000K	Blank For Recessed WH Matte White SL Silver BK Matte Black BZ Bronze	Blank Individual -B Beginner Run -E Ender Run -J Joiner
<b>Lens Material</b>				<b>Driver</b>			
SP1 Specular Parabolic Louver PLA White Cubed Acrylic Louver A Prismatic Acrylic #12 pattern MW Matte White Lens BL Baffled louver Special for LEDs, Only available for uplight and downlight SF Snap In Frosted Acrylic Lens (85% transmission) *Special for LEDs				DMV 0-10V Dimming *Field installed-Dimming Wire DMVFID 0-10V Dimming *Factory installed-Dimming Wire			
	<b>Wattage &amp; Lumen</b>		<b>Options</b>				
	UR24WD48W	Up Light 24 System Watts, Down Light 48 System Watts, 7200 Delivered Lumens	HC401WH HC402WH HC4015WWH HC4025WWH 2SCS24WH	Cable kit with 4' Cable & 3 Wires Power Feed/Cable Incl. and White Canopy Cable kit with 12' Cable & 3 Wires Power feed/Cable Incl. and White Canopy Cable kit with 4' Cable & 5 Wires Power Feed/Cable Incl. and White Canopy Cable kit with 12' Cable & 5 Wires Power feed/Cable Incl. and White Canopy Two Stem kits with 24" Stem, Canopy and Mounting hardware for a 4' fixture			
	UR36WD72W	Up Light 36 System Watts, Down Light 72 System Watts, 10800 Delivered Lumens					

**Notes** \*Custom length available and Custom louvers available in any cell configuration.

\*66R-Designed for standard 1" grid. Consult factory for custom made grid size.



## ORDERING INFORMATION

### 8 FT-UP LIGHT ONLY or DOWN LIGHT ONLY

Example: 66RMW96LR48W4800LDMV40KWH

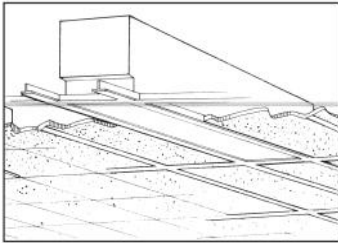
66R	MW	96L	R48W4800L	DMV	40K	WH		
<b>Series</b>		<b>Length</b>			<b>Color Temperature</b>	<b>Finishes</b>		<b>Configuration</b>
66R Recessed Mounted		96L 96"			30K 3000K 35K 3500K 40K 4000K 50K 5000K	Blank For Recessed WH Matte White SL Silver BK Matte Black BZ Bronze		Blank Individual -B Beginner Run -E Ender Run -J Joiner
66RW Recessed Wall Washer								
66RR Recessed Mounted								
66RRPF Recessed Mounted with Proforated Flange								
66RW Recessed Wall Washer								
66RF Recessed Mounted								
66RFW Recessed Wall Washer								
66W Wall Mount								
66WW Wall Mount Wall Wash								
66P Pendant Mount Direct Only								
66PW Pendant Mount Wall Wash Direct Only								
			<b>Wattage &amp; Lumen</b>		<b>Driver</b>			
			R48W4800L 48 System Watts, 4800 Delivered Lumens	DMV 0-10V Dimming *Field installed-Dimming Wire				
			R96W9600L 96 System Watts, 9600 Delivered Lumens	DMVFID 0-10V Dimming *Factory installed-Dimming Wire				
						<b>Options</b>		
						HC401WH Cable kit with 4' Cable & 3 Wires Power Feed/Cable Incl. and White Canopy		
						HC402WH Cable kit with 12' Cable & 3 Wires Power feed/Cable Incl. and White Canopy		
						HC4015WWH Cable kit with 4' Cable & 5 Wires Power Feed/Cable Incl. and White Canopy		
						HC4025WWH Cable kit with 12' Cable & 5 Wires Power feed/Cable Incl. and White Canopy		
						2SCS24WH Two Stem kits with 24" Stem, Canopy and Mounting hardware for a 4' fixture		
			<b>Lens Material</b>					
			SP1 Specular Parabolic Louver					
			PLA White Cubed Acrylic Louver					
			A Prismatic Acrylic #12 pattern					
			MW Matte White Lens					
			BL Baffled louver Special for LEDs, Only available for uplight and downlight					
			SF Snap In Frosted Acrylic Lens (85% transmission) *Special for LEDs					

**Notes** \*Custom length available and Custom louvers available in any cell configuration.  
\*66R-Designed for standard 1" grid. Consult factory for custom made grid size.

## Plug in system Options - it's for continuous run application by simply plugging in sections together

Part Number	Descriptions
PI1	3 Wires Harness, Including White, Black and Green
PI2	4 Wires Harness, Including White, Black, Green and Blue for Emergency Battery Backup
PI3D	5 Wires Harness, Including White, Black, Green, Violet and Gray

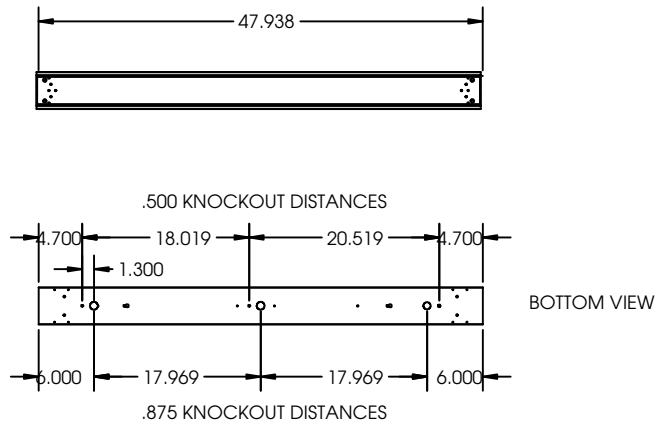
\* Add the accessories part numbers at the end to be factory installed



### DIMENSIONS

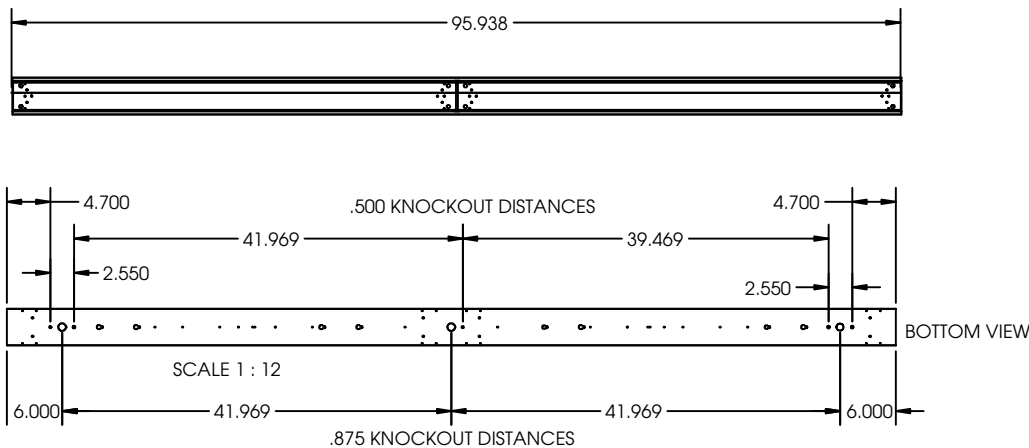
All dimensions are inches. Specifications subject to change without notice.

### 4FT Dimensions



Baffled Louver (BL)

### 8FT Dimensions



Recessed Mounted with  
Profolated Flange  
(RRPF)

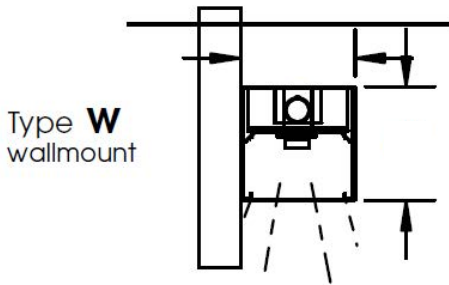




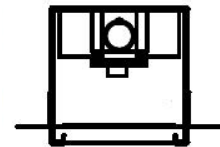
**DIMENSIONS**

All dimensions are inches. Specifications subject to change without notice.

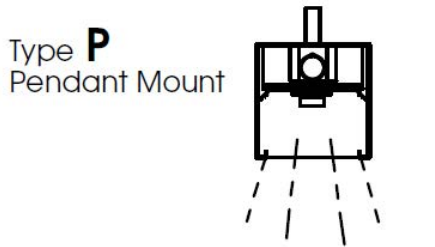
## Flange Details



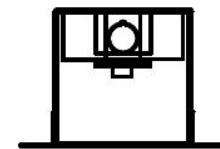
Type **RR**  
Recess for Drywall/  
Hard Ceiling  
-RR (1/2 inch)  
-RR650 (5/8 inch)  
-RRxxx (custom depth)



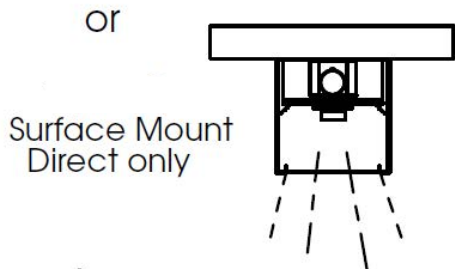
Flangeless  
Appearance



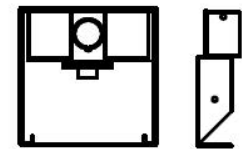
Type **RF**  
Flush for Drywall



Flanged  
Appearance



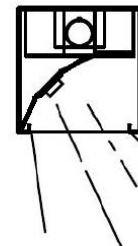
Type **R**  
For 1" T-bar



Flangeless  
Appearance



Type **RW/ RFW/ RRW**  
-Recess Wall Wash



Flanged/  
Flangeless  
Appearance

\*66R-Designed for standard 1" grid. Consult factory for custom made grid size.



Catalog Number:
Notes: