



Texas Fluorescents
Reinvented

66 Series 4ft

Recessed, Surface or Pendant Mount

FEATURES & SPECIFICATIONS

INTENDED USE

Specification grade, modular linear lighting luminaire in a geometric 6 inch shape. For use in indoor applications where individual or continuous lighting is desired for general or perimeter lighting applications. The 66 series is available in surface, pendant (suspended), or recessed (see matching wall series). Recessed 66 series are available for T Bar installation without a flange or for flanged construction for sheetrock installation. Pendant and surface mount configurations allow direct light only, indirect light only or direct light with uplight through slots. Pendant mounted fixtures can be used with cable kits or rigid stem kits specified separately. Surface and pendant fixtures can be painted in a variety of finishes for the right look for your application.

SIZE W x L X H in inches

6.0W x 6.0H (See Dimensions)

MATERIALS & FEATURES

Housing is die-formed and welded of heavy gauge cold rolled steel. Knockouts on the ends allow continuous wireway mounting. Fixtures can be hung in various types of recessed ceilings. Leveling lugs are available to support regular recess units.

FINISH

All metal parts are cleaned and treated with a three-stage phosphate coating. These are electrostatically sprayed with a high quality white baking enamel providing a minimum of 87% reflectivity.



DIFFUSERS

Various lenses lie on the side flanges of the fixture. Six and eight foot units have a steel mullion to join two individual diffusers. A baffled louver is available to shield glare.

TYPICAL OPTIONS AND ACCESSORIES

Emergency ballasts, Cord sets, whips, occupancy sensors, Hanging kits, Wire guards, Contact factory for additional options.

ORDERING INFORMATION

4 FT-UP and DOWN LIGHT (not available in recessed)

Example: 66WMW48LUR12WD24WDMV40KWH

66W		MW	48L	UR12WD24W		DMV	40K		WH			
Series			Length				Color Temperature		Finishes			Configuration
66W Wall Mounted 66P Pendant Mounted			48L 48"				30K 3000K 35K 3500K 40K 4000K 50K 5000K		Blank For Recessed WH Matte White SL Silver BK Matte Black BZ Bronze			Blank Individual -B Beginner Run -E Ender Run -J Joiner
Lens Material						Driver						
SP1 Specular Parabolic Louver PLA White Cubed Acrylic Louver A Prismatic Acrylic #12 pattern MW Matte White Lens BL Baffled louver Special for LEDs, Only available for uplight and downlight SF Snap In Frosted Acrylic Lens (85% transmission) *Special for LEDs						DMV 0-10V Dimming *Field installed-Dimming Wire DMVFID 0-10V Dimming *Factory installed-Dimming Wire						
Wattage & Lumen						Options						
UR12WD24W Up Light 12 System Watts, Down Light 24 System Watts, 3600 Delivered Lumens						HC401WH Cable kit with 4' Cable & 3 Wires Power Feed/Cable Incl. and White Canopy HC402WH Cable kit with 12' Cable & 3 Wires Power feed/Cable Incl. and White Canopy HC4015WWH Cable kit with 4' Cable & 5 Wires Power Feed/Cable Incl. and White Canopy HC4025WWH Cable kit with 12' Cable & 5 Wires Power feed/Cable Incl. and White Canopy 2SCS24WH Two Stem kits with 24" Stem, Canopy and Mounting hardware for a 4' fixture						
UR18WD36W Up Light 18 System Watts, Down Light 36 System Watts, 5400 Delivered Lumens												

Notes *Custom length available and Custom louvers available in any cell configuration.

*66R-Designed for standard 1" grid. Consult factory for custom made grid size.

Saylite
2055 Luna Rd. Suite 142 Carrollton, TX 75006
Phone: 972-247-3171 Fax: 972-247-0200
www.saylite.com email: sales@saylite.com

Catalog Number:

Notes:

66 Series 4ft

Recessed, Surface or Pendant Mount



ORDERING INFORMATION

4 FT-UP LIGHT ONLY or DOWN LIGHT ONLY (not available in recessed)

Example: 66RMW48LR24W2400LDMV40KWH

66R	MW	48L	R24W2400L	DMV	40K	WH	
Series		Length			Color Temperature	Finishes	Configuration
66R Recessed Mounted 66RW Recessed Wall Washer 66RR Recessed Mounted 66RW Recessed Wall Washer 66RF Recessed Mounted 66RFW Recessed Wall Washer		48L 48"			30K 3000K 35K 3500K 40K 4000K 50K 5000K	Blank For Recessed WH Matte White SL Silver BK Matte Black BZ Bronze	Blank Individual -B Beginner Run -E Ender Run -J Joiner
			Wattage & Lumen		Driver		
			R24W2400L 24 System Watts, 2400 Delivered Lumens R48W4800L 48 System Watts, 4800 Delivered Lumens	DMV 0-10V Dimming *Field installed-Dimming Wire DMVFID 0-10V Dimming *Factory installed-Dimming Wire			
66W Wall Mount 66WW Wall Mount Wall Wash 66P Pendant Mount Direct Only 66PW Pendant Mount Wall Wash Direct Only						Options	
				HC401WH HC402WH HC4015WWH HC4025WWH 2SCS24WH	Cable kit with 4' Cable & 3 Wires Power Feed/Cable Incl. and White Canopy Cable kit with 12' Cable & 3 Wires Power feed/Cable Incl. and White Canopy Cable kit with 4' Cable & 5 Wires Power Feed/Cable Incl. and White Canopy Cable kit with 12' Cable & 5 Wires Power feed/Cable Incl. and White Canopy Two Stem kits with 24" Stem, Canopy and Mounting hardware for a 4' fixture		
			Lens Material				
			SP1 Specular Parabolic Louver PLA White Cubed Acrylic Louver A Prismatic Acrylic #12 pattern MW Matte White Lens BL Baffled louver Special for LEDs, Only available for uplight and downlight SF Snap In Frosted Acrylic Lens (85% transmission) *Special for LEDs				

Notes *Custom length available and Custom louvers available in any cell configuration.

*66R-Designed for standard 1" grid. Consult factory for custom made grid size.



ORDERING INFORMATION

8 FT-UP and DOWN LIGHT

Example: 66WMW96LUR24WD48WDMV40KWH

66W	MW	96L	UR24WD48W	DMV	40K	WH	
Series		Length			Color Temperature	Finishes	Configuration
66W Wall Mounted 66P Pendant Mounted		96L 96"			30K 3000K 35K 3500K 40K 4000K 50K 5000K	Blank For Recessed WH Matte White SL Silver BK Matte Black BZ Bronze	Blank Individual -B Beginner Run -E Ender Run -J Joiner
Lens Material				Driver			
SP1 Specular Parabolic Louver PLA White Cubed Acrylic Louver A Prismatic Acrylic #12 pattern MW Matte White Lens BL Baffled louver Special for LEDs, Only available for uplight and downlight SF Snap In Frosted Acrylic Lens (85% transmission) *Special for LEDs				DMV 0-10V Dimming *Field installed-Dimming Wire DMVFID 0-10V Dimming *Factory installed-Dimming Wire			
			Wattage & Lumen	Options			
			UR24WD48W Up Light 24 System Watts, Down Light 48 System Watts, 7200 Delivered Lumens	HC401WH Cable kit with 4' Cable & 3 Wires Power Feed/Cable Incl. and White Canopy HC402WH Cable kit with 12' Cable & 3 Wires Power feed/Cable Incl. and White Canopy HC4015WWH Cable kit with 4' Cable & 5 Wires Power Feed/Cable Incl. and White Canopy HC4025WWH Cable kit with 12' Cable & 5 Wires Power feed/Cable Incl. and White Canopy 2SCS24WH Two Stem kits with 24" Stem, Canopy and Mounting hardware for a 4' fixture			
			UR36WD72W Up Light 36 System Watts, Down Light 72 System Watts, 10800 Delivered Lumens				

Notes *Custom length available and Custom louvers available in any cell configuration.

*66R-Designed for standard 1" grid. Consult factory for custom made grid size.



ORDERING INFORMATION

8 FT-UP LIGHT ONLY or DOWN LIGHT ONLY

Example: 66RMW96LR48W4800LDMV40KWH

[illegible]

Notes *Custom length available and Custom louvers available in any cell configuration.

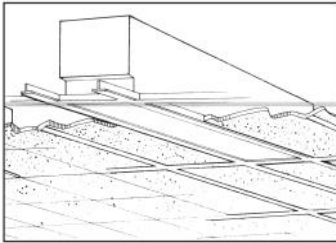
*66R-Designed for standard 1" grid. Consult factory for custom made grid size.

Plug in system Options

- it's for continuous run application by simply plugging in sections together

Part Number	Descriptions
PI1	3 Wires Harness, Including White, Black and Green
PI2	4 Wires Harness, Including White, Black, Green and Blue for Emergency Battery Backup
PI3D	5 Wires Harness, Including White, Black, Green, Violet and Gray

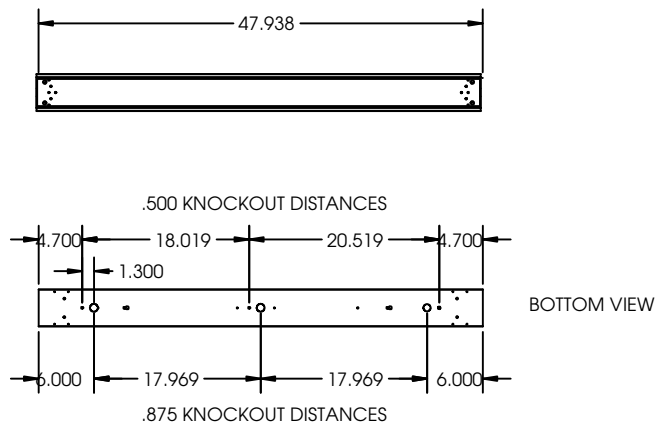
* Add the accessories part numbers at the end to be factory installed



DIMENSIONS

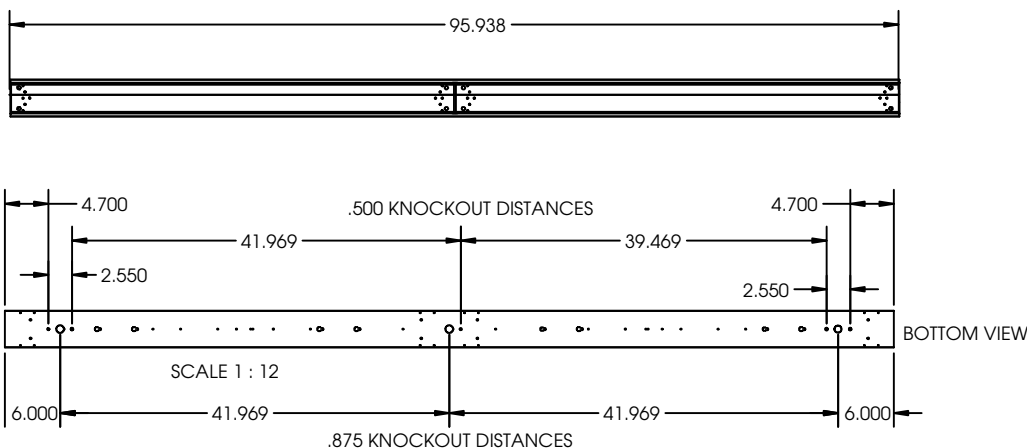
All dimensions are inches. Specifications subject to change without notice.

4FT Dimensions



Baffled Louver (BL)

8FT Dimensions

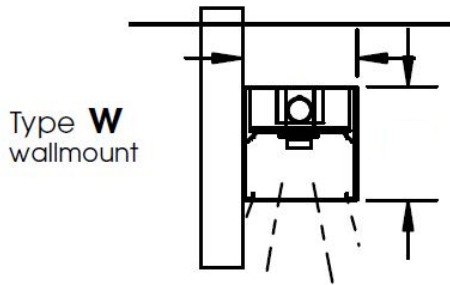




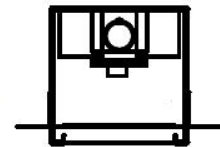
DIMENSIONS

All dimensions are inches. Specifications subject to change without notice.

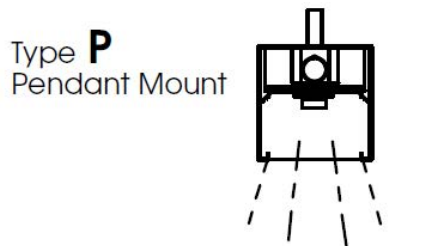
Flange Details



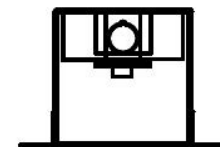
Type **RR**
Recess for Drywall/
Hard Ceiling
-RR (1/2 inch)
-RR650 (5/8 inch)
-RRxxx (custom depth)



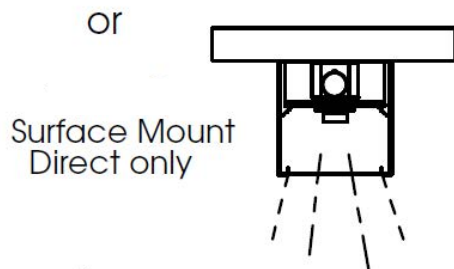
Flangeless
Appearance



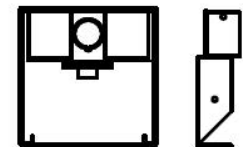
Type **RF**
Flush for Drywall



Flanged
Appearance



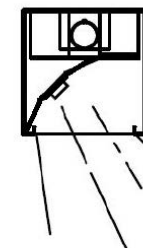
Type **R**
For 1" T-bar



Flangeless
Appearance



Type **RW/ RFW/ RRW**
-Recess Wall Wash



Flanged/
Flangeless
Appearance

*66R-Designed for standard 1" grid. Consult factory for custom made grid size.

