



JOB NAME:

CAT#:

TYPE:

APPLICATIONS

A clear acrylic #8 pattern lens and 1 or 2 rows of LEDs in a cross-section allows this wraparound to be suitable for a variety of applications. A full wireway allows for more uniform light distribution. A great choice for corridors, hallways and other institutional spaces.

Housing is 22 gauge baked white enamel cold rolled steel body and ends. Wiring knockouts are provided on back end of housing. Ballast cover or reflector snaps into place. No tools are required for ballast access. Lens is held with lift and shift method.



FEATURES & BENEFITS

- A full wireway allows for more uniform light distribution, 1 or 2 LEDs in cross section
- Acrylic #8 pattern lens
- Suitable for a variety of applications
- Min CRI 80
- cETL_{US} Listed for damp locations

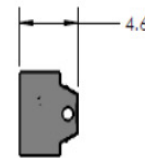
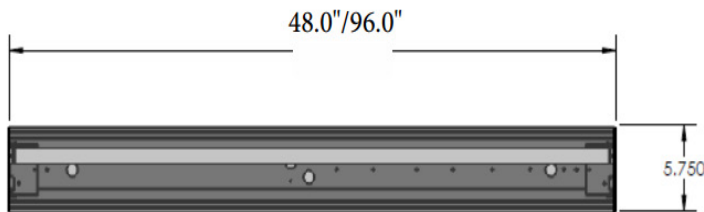
DIMENSIONS



2 Rows of LEDs Distribution



1 Row of LEDs Distribution



Dimensions and specifications subject to change without notice.





JOB NAME:

CAT#:

TYPE:

ORDERING

EXAMPLE: 772N 48 LED 23 DMV 30 EM WP

772N		LED					
1. SERIES	2. SIZE	3. GEAR	4. WATTAGE/LUMENS	5. DRIVER ¹	6. COLOR TEMP	7. EMERGENCY (O) ²	
772N 5" Narrow Wraparound	48 48"	LED	4 ft.				EM 10W, 1200 Lumen Battery backup
	96 96"		23 23 Watts 2650 Lumens	DMV 120-277VAC 0-10V Dimmable	30 3000K		
			28 28 Watts 2950 Lumens		SDMV Stepdimming 120- 277VAC 100-40%	35 3500K	
			32 32 Watts 3450 Lumens	40 4000K			
			35 35 Watts 3800 Lumens	50 5000K			
			48 48 Watts 4800 Lumens				
			72 72 Watts 7200 Lumens				
	8 FT.						
			23 23 Watts 2650 Lumens				
			35 35 Watts 3800 Lumens				
			48 48 Watts 5100 Lumens				
			56 56 Watts 6000 Lumens				
			65 65 Watts 7000 Lumens				
			97 97 Watts 9600 Lumens				

8. WHIP (O)²

WP 6' Whip 3
Wire

*See cord & whip ordering chart below

*Cord & Whip Ordering Chart (Add to End of Fixture Part Number)						
Part No.	# of Wires	Length	End Fitting	Finish	Voltage	Amps (TL Only)
WP - Whip CS - Cordset	(Blank) 3 Wire 4 - 4 Wire 5 - 5 Wire 6 - 6 Wire	(Blank) 6 feet 8 - 8 feet 10 - 10 feet 12 - 12 feet 15 - 15 feet	(Blank) No Plug P* - Standard Plug TL* - Twist Lock	BK - Black WH - White	(Blank) 120-277V 120 - 120V 277 - 277V 347 - 347V 480 - 480V	15 - 15 Amps 20 - 20 Amps

Notes:

¹Consult fr Triac dimming

²(O) is optional

Dimensions and specifications subject to change without notice.

