



## Description

Altech's Hyper Series Area Light LED fixture debuted at Lightfair in 2018. With a higher lumen output, it is sure to provide any project with more than enough coverage.



Not all product variations listed on this page are DLC Premium qualified. To ensure that a specific model is qualified, visit [www.designlights.org/search](http://www.designlights.org/search)

## Applications

Auto Dealerships  
Parking Lots

Outdoor Courts  
Sports Fields

Outdoor Malls  
Public Parks

## Specs

Efficacy 165 lm/W  
Input Voltage 100-277V  
Finish Bronze

## Details

IP Rating IP67  
EPA Rating 0.9  
Materials Aluminum  
Lens Polycarbonate  
L70 Life 150,000 Hours  
Warranty 10 Years  
CRI 80+  
Qualification UL, DLC Premium, FCC, CE, RoHS  
Chip Man. Philips  
Whip Length(ft) 1.67'

## Electrical

Power Factor 0.99  
Frequency 50/60 Hz  
Max THD 10%  
Operating Temp. -40° F to 150° F  
-40° C to 65° C  
Dimming 3 in 1 (Resistance, PWM, 0-10V)

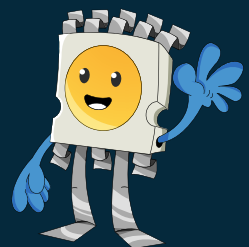
LED AREA LIGHT HYPER SERIES, MEDIUM

## Ordering Information

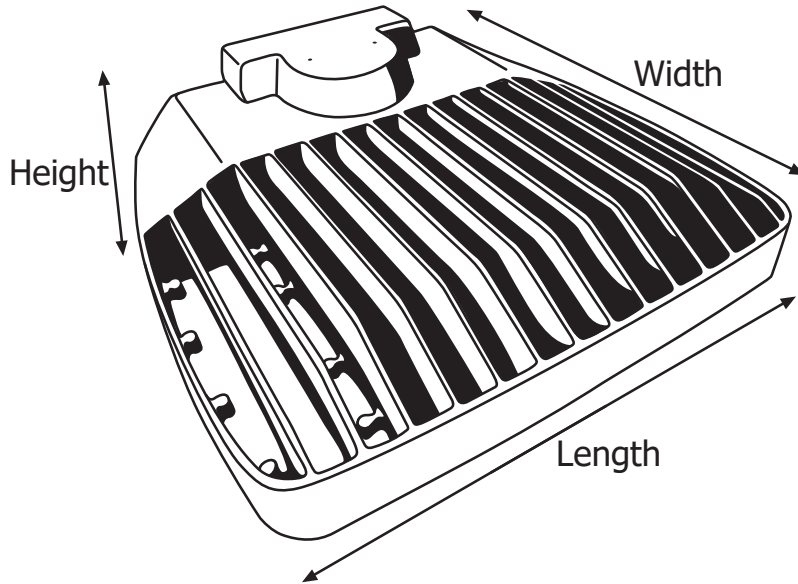
ORDERING/DLC #:	Wattage	CCT	Lumens	Equivalent
U-HALM-60W-30-D	60W	3000K	9,120	300W MH
U-HALM-60W-40-D	60W	4000K	9,480	300W MH
U-HALM-60W-50-D	60W	5000K	9,840	300W MH
U-HALM-90W-30-D	90W	3000K	14,400	450W MH
U-HALM-90W-40-D	90W	4000K	14,940	450W MH
U-HALM-90W-50-D	90W	5000K	15,480	450W MH
U-HALM-120W-30-D	120W	3000K	18,600	600W MH
U-HALM-120W-40-D	120W	4000K	19,320	600W MH
U-HALM-120W-50-D	120W	5000K	20,040	600W MH
U-HALM-150W-30-D	150W	3000K	22,500	750W MH
U-HALM-150W-40-D	150W	4000K	23,400	750W MH
U-HALM-150W-50-D	150W	5000K	24,300	750W MH

## Additional Notes

- 4000K and 5000K, 100-277V in BRONZE are stocked locally, check for ETA's
- Lifespan is more than 27 years operating 10 hours a day, based on L70 standards
- Altech Electronics reserves the right to make periodic improvements to our product specs



**Fixture Dimensions and Weight**



Length	Width	Height	Weight
13.75 in.	12.75 in.	3.6 in.	12 lb.
349 mm.	323 mm.	91 mm.	5.4 kg.

**Accessories and Options**

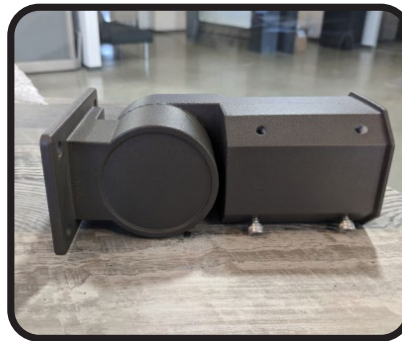


**Compatible with controls and integrations**

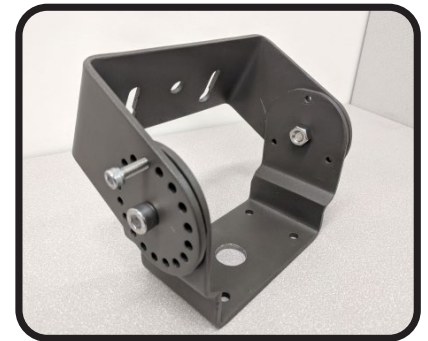
**Mounting Options**



**6" Extruded Arm Mount**



**Slip Fitter Mount**



**Trunnion Mount**

### Wiring Precaution

The international color scheme is brown (hot), blue (neutral) and green/yellow (ground) wiring. Always disconnect power when installing or troubleshooting. Consult a licensed technician.



### Fixture-to-Mount Installation

1. Match screw holes on the mount with the fixture. (Refer to image on the right)
2. Run the wire from the fixture through mount.
3. Hand-tighten the screws into place.
4. Tighten the screws with a tool to secure it.
5. Installation complete.

