



Description

Altech's Hyper Series Area Light LED fixture debuted at Lightfair in 2018. With a higher lumen output, it is sure to provide any project with more than enough coverage.



Not all product variations listed on this page are DLC Premium qualified. To ensure that a specific model is qualified, visit www.designlights.org/search

Applications

Auto Dealerships
Parking Lots

Outdoor Courts
Sports Fields

Outdoor Malls
Public Parks

Specs

Efficacy 165 lm/W
Input Voltage 100-277V
Finish Bronze

Details

IP Rating IP67
EPA Rating 0.9
Materials Aluminum
Lens Polycarbonate
L70 Life 150,000 Hours
Warranty 10 Years
CRI 70+
Qualification UL, DLC Premium, FCC, CE, RoHS
Chip Man. Philips
Whip Length(ft) 1.67'

Electrical

Power Factor 0.99
Frequency 50/60 Hz
Max THD 10%
Operating Temp. -40° F to 150° F
-40° C to 65° C
Dimming 3 in 1 (Resistance, PWM, 0-10V)

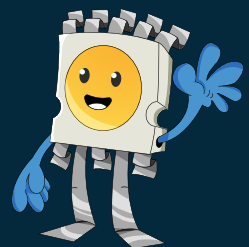
LED AREA LIGHT HYPER SERIES, MEDIUM

Ordering Information

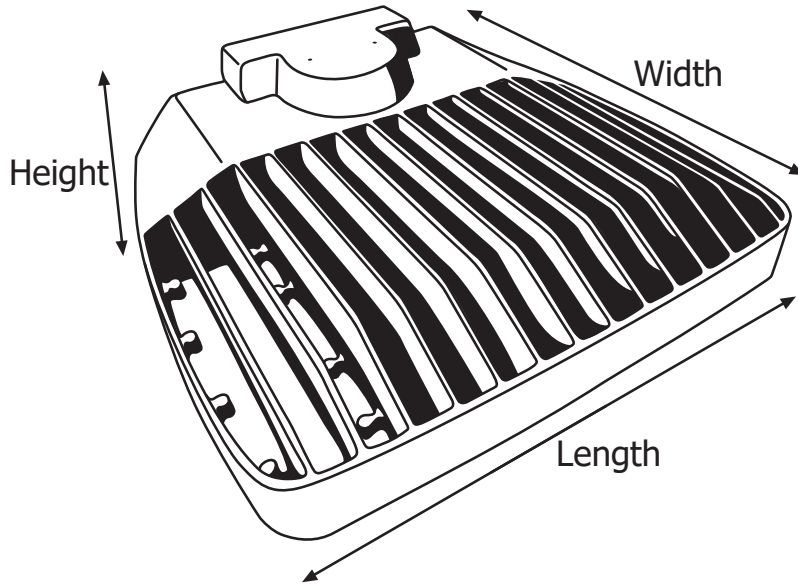
ORDERING/DLC #:	Wattage	CCT	Lumens	Equivalent
U-HALM-60W-30-D	60W	3000K	9,120	300W MH
U-HALM-60W-40-D	60W	4000K	9,480	300W MH
U-HALM-60W-50-D	60W	5000K	9,840	300W MH
U-HALM-90W-30-D	90W	3000K	14,400	450W MH
U-HALM-90W-40-D	90W	4000K	14,940	450W MH
U-HALM-90W-50-D	90W	5000K	15,480	450W MH
U-HALM-120W-30-D	120W	3000K	18,600	600W MH
U-HALM-120W-40-D	120W	4000K	19,320	600W MH
U-HALM-120W-50-D	120W	5000K	20,040	600W MH
U-HALM-150W-30-D	150W	3000K	22,500	750W MH
U-HALM-150W-40-D	150W	4000K	23,400	750W MH
U-HALM-150W-50-D	150W	5000K	24,300	750W MH

Additional Notes

- 4000K and 5000K, 100-277V in BRONZE are stocked locally, check for ETA's
- Lifespan is more than 27 years operating 10 hours a day, based on L70 standards
- Altech Electronics reserves the right to make periodic improvements to our product specs



Fixture Dimensions and Weight



Length	Width	Height	Weight
13.75 in.	12.75 in.	3.6 in.	12 lb.
349 mm.	323 mm.	91 mm.	5.4 kg.

Accessories and Options

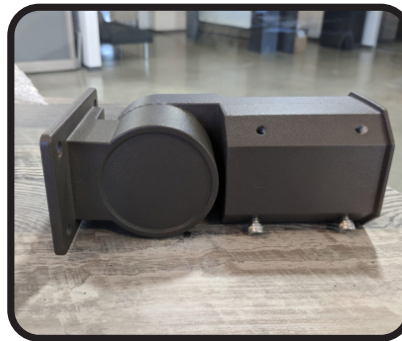


Compatible with controls and integrations

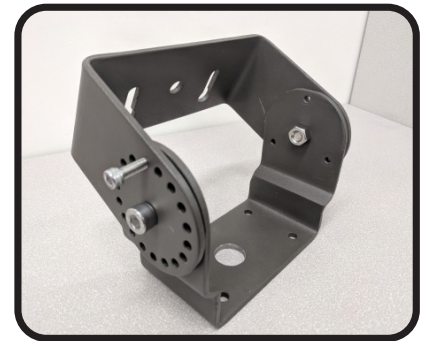
Mounting Options



6" Extruded Arm Mount



Slip Fitter Mount



Trunnion Mount

Wiring Precaution

The international color scheme is brown (hot), blue (neutral) and green/yellow (ground) wiring. Always disconnect power when installing or troubleshooting. Consult a licensed technician.



Fixture-to-Mount Installation

1. Match screw holes on the mount with the fixture. (Refer to image on the right)
2. Run the wire from the fixture through mount.
3. Hand-tighten the screws into place.
4. Tighten the screws with a tool to secure it.
5. Installation complete.

