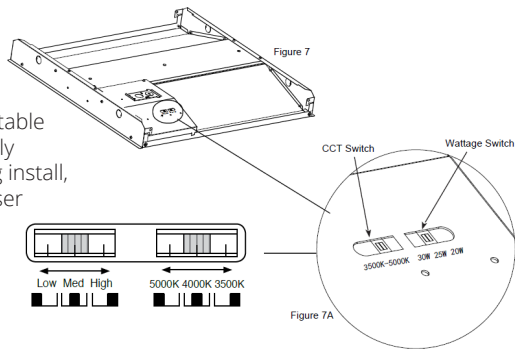




The DUO Direct Kit is a universal retrofit package that allows LED light engines to be incorporated into any existing fluorescent luminaires of standard 2x2 or 2x4 dimensions. The design allows fluorescent fixture housings to be retained while efficient LED light engines take the place of conventional lamps. The DUO Direct kits feature field selectable power settings (3), and offer field selectable color temperatures (3); giving Distributors maximum inventory flexibility, and Installers easy adjustments.

Product Specs	
Input Voltage (VAC)	120-277, 50/60 Hz
CRI	80
CCT (K)	3500, 4000, 5000 Selectable
Selectable Wattages	30W, 25W, 20W (2x2) - 34W, 30W, 25W (2x4)
PF	.9
THD	20%
L70*	100,000+
Limited Warranty	5 Years

*L70 data is calculated based on LM80 and ISMT reports



DUO's field selectable switches are easily accessible during install, but away from user changes later

PROJECT DETAILS		TYPE
Project:		
Product:		
Prepared by:		
Notes:		

APPLICATIONS		
Application	Small/Partitioned Office	
Fixture Type	Lay-in Troffer / FP (P)	
Office and Meeting Space	X	
Educational Facilities	X	
Industrial and Distribution		
Hospital and Healthcare Facilities	X	
Garage and Parking Lot		
Parks and Recreation	X	

ENABLED: Bluetooth DLC Tru Blu SILVAIR

CERTIFICATIONS AND COMPATIBILITIES

DIMMABLE 1-10V TOXIN FREE -20°C - 50°C OPERATING PHOTOCELL MOTION SENSOR 5 YEAR WARRANTY

DLC CE RoHS UL TITLE 24 POWER & COLOR SELECTABLE

Order Format		Example: ECDK24T-34W-01			
Series	Model	Wattage	CCT	Voltage	Option
ECDK	22T = 2'x2' CCT + Lumen Selectable	30W = 20W/25W/30W Selectable	01 = 3500/4000/5000 Selectable	Blank = 100-277V	See table
	24T = 2'x4' CCT + Lumen Selectable	34W = 25W/30W/34W Selectable			

INFORMATION FOR LIGHTING CONTROLS APPLICATIONS		
<p>LLLC - Luminaire Level Lighting Control (Mesh Network)</p>	<p>LALC - Local Area Lighting Control (Circuit Level)</p>	<p>SAFC - Stand Alone Fixture Control</p>
		<p>*possibly rebated on fixture only</p>
<p>Control-luminaire groupings typified by needs to a space or user, coordinated via wireless signals, executed at each luminaire. LLLC and networked solutions are highlighted by ability to operate independently or in mesh coordination. Note: they are not related by a power circuit.</p>	<p>LALC solutions are highlighted by their "many to one" arrangements. This can save on hardware costs with minimal labor increases. Characteristically they are linked (related) by power or control wires.</p>	<p>SALC solutions have sensors that typically only detect and individually control a single fixture. Characteristically they have A) 1:1 sensor to fixture relationship; B) sensor integrally wired and/or affixed to fixture; C) Likely to have physical settings on the sensor, but may have hand held program tool.</p>

CONTROLS, OPTIONS, AND ACCESSORIES		↓ CLICKABLE LINKS ↓
LLLC - LUMINAIRE LEVEL LIGHTING CONTROL (MESH NETWORK)		
ATG Code	Description	Model Number
W1	Bi-level PIR Integrated Mount Occupancy Sensor DLH	PSC-BL-I-RD-DC0-BLE-SR
P7	12V power supply for fixture mount with relay	PSC-AC-PP-700C
LALC - LOCAL AREA LIGHTING CONTROL (CIRCUIT LEVEL)		
ATG Code	Description	Model Number
W7	Wireless Occupancy Wall Switch	PSC-DM-WS-100-BLE-SR
W8	Wireless Dimmer Wall Switch	PSC-DM-I-WS-100-BLE-SR
W9	12V Wireless Fixture Controller	PSC-WCM-50-DC0-BLE-SR
W15	Ceiling Mount PIR Occupancy Sensor	PSC-ND-I-CM-DC-BLE-SR
P5	Room Controller, KO Mount, 120-277In / 12DC and 0-10V Out / 16A	PSC-WCM-450-BLE-SR
P2	Dimming Power Pack, Fixture Mount, 120-277Vac Input, 12.5Vdc Output / 10A	PSC-AC-PP-200
S AFC - STAND ALONE FIXTURE CONTROL		
ATG Code	Description	Model Number
S7	Sensor, Microwave 120/277V, Remote Antenna On/Off/Dim/Lux Hold Off	MWS01
R3	Hand held remote programmer (use with S6)	RM01
S0	Sensor, RF, 120-277V, Occupancy and DLH, Inside Mount	BRI-810-M10
R1	Programmer, Hand Held Remote for BRI Series Sensor	RC-100
ACCESSORIES		
ATG Code	Description	Model Number
EM	Emergency Driver	EMH-08170-FY

LUMEN MAINTENANCE LIFETIME DATA							
ECDK24T							
Ambient Test Temp	Reported Hrs	0 Hrs	25,000 Hrs	TM-21-11 L92@54,000	50,000 Hrs	100,000 Hrs	L70 Hrs
25°C/77°F	54,000	1	0.9587	0.9073	0.9142	0.8313	190,000
ECDK22T							
Ambient Test Temp	Reported Hrs	0 Hrs	25,000 Hrs	TM-21-11 L92@54,000	50,000 Hrs	100,000 Hrs	L70 Hrs
25°C/77°F	54,000	1	0.9577	0.9051	0.9122	0.8276	186,000

*DLC tested hours = Max 6X LM-80 tested duration (Seoul Semiconductor Co., LTD; STW8A2PD-XX @ 9,000 Hrs.)

CONSTRUCTION

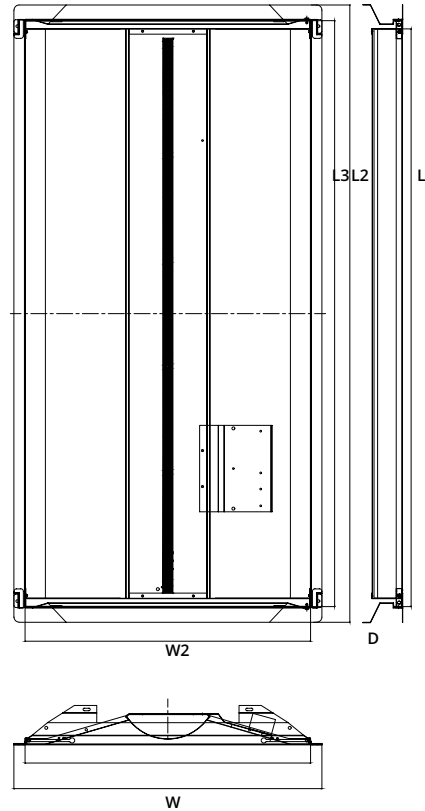
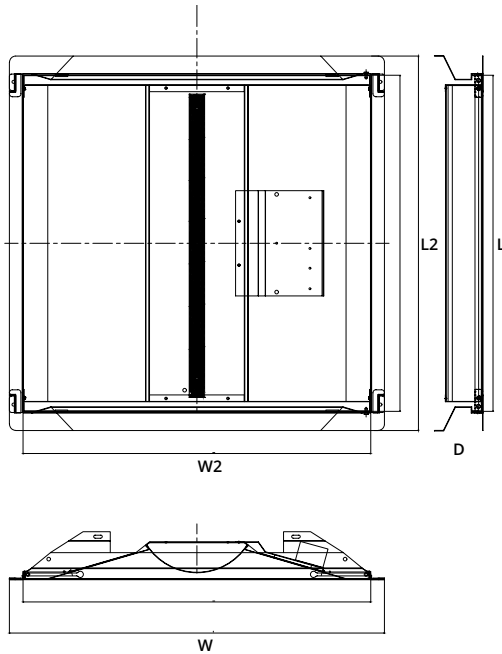
Constructed in a sturdy and well-fitted sheet metal and PC diffuser, with a frosted lens for brilliant illumination. The luminaire is coated in an environmentally friendly polyester powder formulated for a durable and long-lasting color in a matte white finish. No toxic heavy metals, VOC, or mercury were used in the design of this product.

LUMEN DATA

Size	Part Number	Wattage	3500K [†]		4000K [†]		5000K [†]	
			Efficacy (LM/W)	Lumens (Lm)	Efficacy (LM/W)	Lumens (Lm)	Efficacy (LM/W)	Lumens (Lm)
2x2	ECDK22T-30W-01	30W	127	3915 [°]	127	3810	126	3780
		25W	132	3300	134	3350	133	3325
		20W	130	2600	132	2640	131	2620
2x4	ECDK24T-34W-01	34W	126	4333 [°]	127	4318	126	4284
		30W	132	3960	134	4020	133	3990
		25W	130	3250	132	3300	131	3275

[°]DLC Tested values

[†]Nominal CCT values



DIMENSIONS

WATTAGE	PART NO.	LENGTH	LENGTH (L2)	WIDTH (W)	WIDTH (W2)	DEPTH (D)
30W	ECDK22T	21.37	23.81	23.85	22.13	2.76

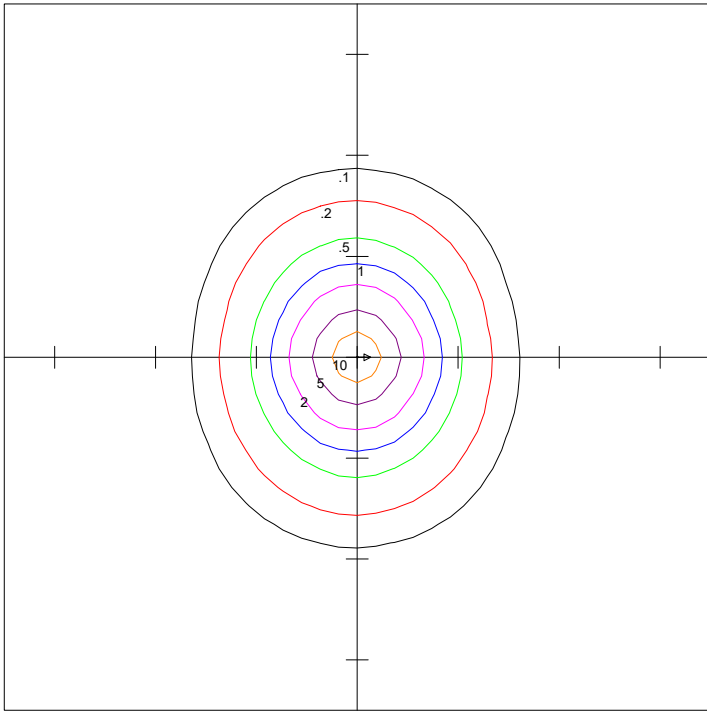
Recorded in inches

DIMENSIONS

WATTAGE	PART NO.	LENGTH	LENGTH (L2)	LENGTH (L3)	WIDTH (W)	WIDTH (W2)	DEPTH (D)
34W	ECDK24T	44.76	47.83	45.39	23.85	22.12	2.76

Recorded in inches

POLAR PLOTS



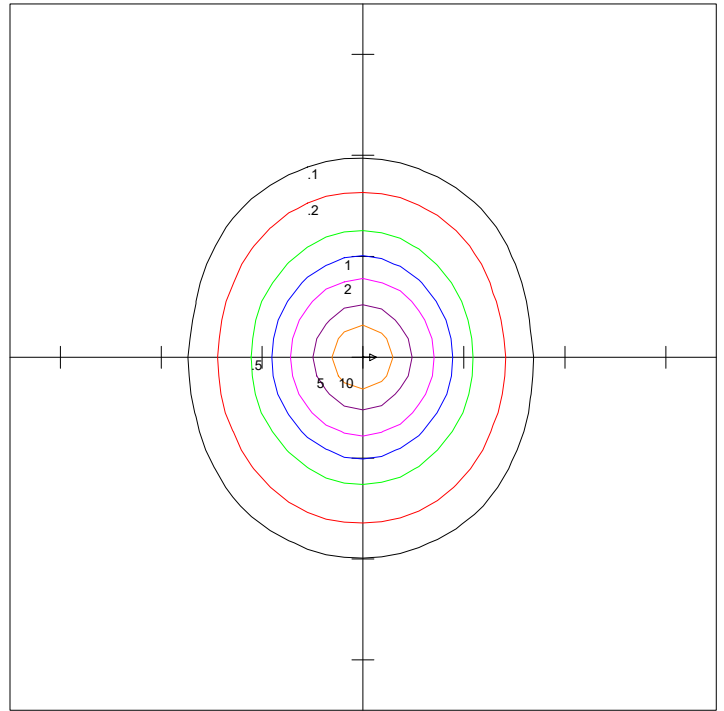
ECDK22T-20W-40

Scale: 1 Inch = 15 Ft.

Luminaire Lumens = 2855

Mounting Height = 8.00 Ft

Maximum Calculated Value = 15.11 Fc



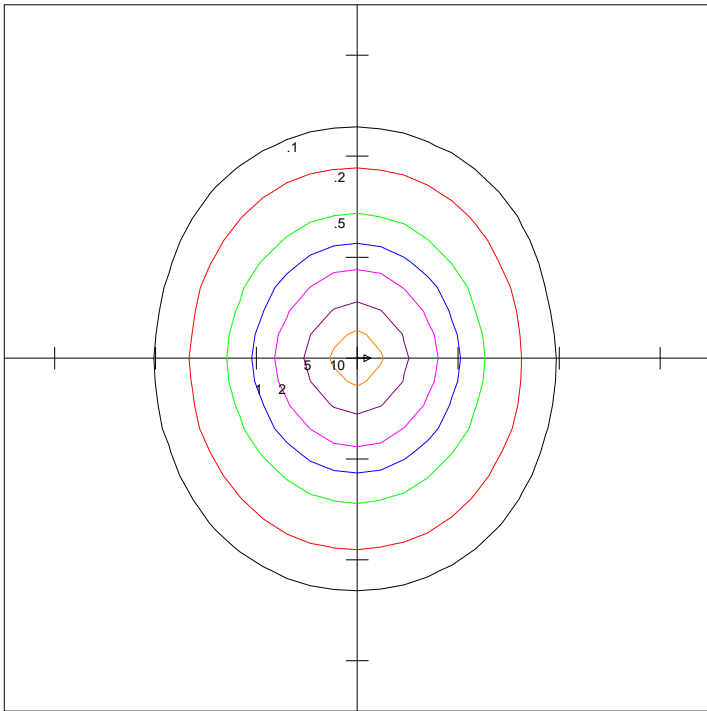
ECDK22T-25W-40

Scale: 1 Inch = 15 Ft.

Luminaire Lumens = 3463

Mounting Height = 8.00 Ft

Maximum Calculated Value = 18.32 Fc



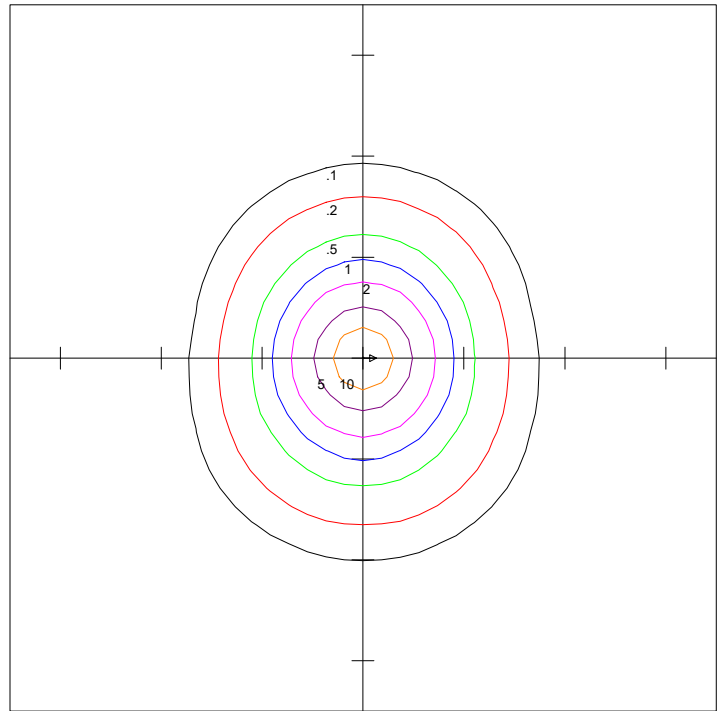
ECDK22T-30W-40

Scale: 1 Inch = 15 Ft.

Luminaire Lumens = 4097

Mounting Height = 10.00 Ft

Maximum Calculated Value = 13.87 Fc



ECDK24T-25W-40

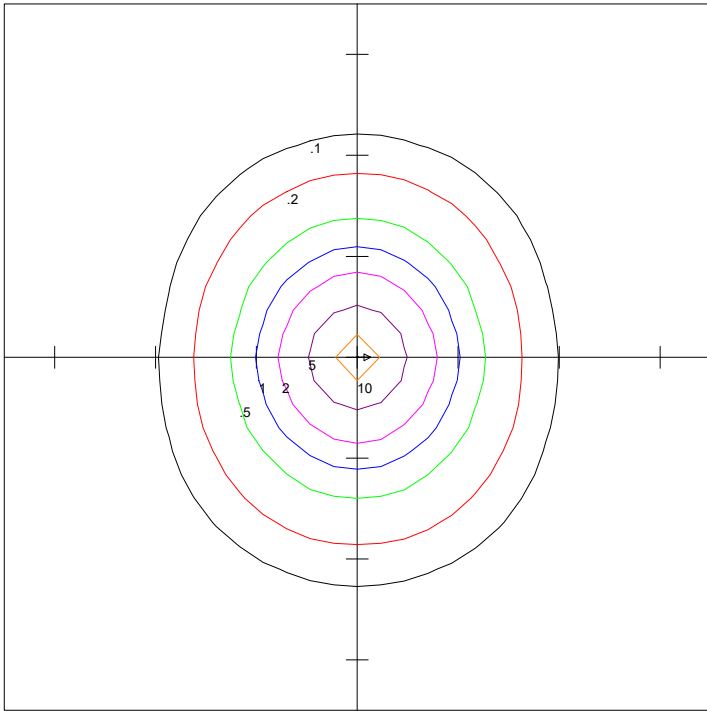
Scale: 1 Inch = 15 Ft.

Luminaire Lumens = 3444

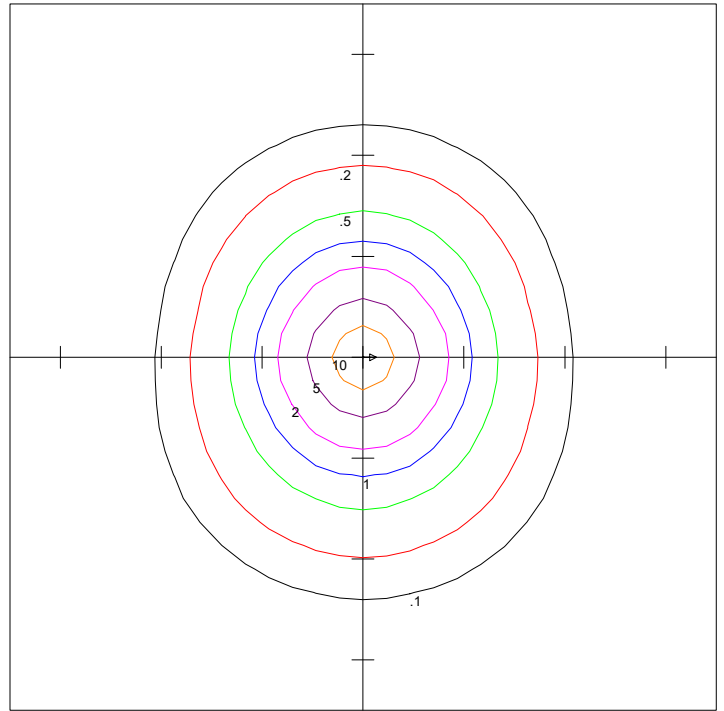
Mounting Height = 8.00 Ft

Maximum Calculated Value = 17.92 Fc

POLAR PLOTS



ECDK24T-30W-40
Scale: 1 Inch = 15 Ft.
Luminaire Lumens = 3804
Mounting Height = 10.00 Ft
Maximum Calculated Value = 12.69 Fc



ECDK24T-34W-40
Scale: 1 Inch = 15 Ft.
Luminaire Lumens = 4560
Mounting Height = 10.00 Ft
Maximum Calculated Value = 15.18 Fc

5 YEAR WARRANTY

ATG Electronics®

Industry Leading 5 Year Limited Warranty

For North American LED Lighting Fixtures

ATG Electronics warrants to the original purchaser of ATG Electronics Domestic LED products listed above that were manufactured for which the ATG Electronics Spec Sheet located on our website contains the words "5 year limited warranty" that, subject to the below terms and conditions of this warranty, when such LED products are properly installed they will comply with ATG Electronics published product specifications for such products and will be free from material defects in material and workmanship for a period of five (5) years from the date of sale by ATG Electronics, or, if lesser, 50,000 hours of operation (at an average of 13.6 hours per day operation). The LED arrays in the Product(s) will be considered defective in material or workmanship only if a total of 15% or more of the individual light emitting diodes in the Product(s) fail to illuminate.

The above express limited warranty is extended by ATG Electronics® only to the original or first end-user purchaser and only for the original installed location. This warranty only applies to products purchased after June 1, 2017. This warranty is non-transferrable, whether by assignment or operation of law. The original purchaser must provide warranty claims to ATG Electronics within the warranty period promptly upon discovery and in accordance with ATG Electronics Return and Repair Procedures as outlined within this document.

Should any defects be found by ATG Electronics upon its inspection of the properly returned product, ATG Electronics sole responsibility and liability under this warranty will be, at its option, to either repair or replace the defective part or parts or else make available a new replacement unit that will provide equal or better performance. All decisions regarding the existence or non-existence of defects or otherwise affecting the warranty shall be made by ATG ELECTRONICS and shall be final and binding on all parties. Where a defective LED product is replaced under this warranty, the balance of the original warranty period shall remain effective.

Conditions and Exclusions

This warranty is conditioned upon proper installation, use and maintenance. This warranty will automatically become null and void and shall not be applicable to any LED fixture which (i) has not been timely paid for, (ii) is not installed and operated in accordance with the current edition of The National Electric Code (NEC), the Standards for Safety of Underwriters' Laboratory, Inc. (UL) or with ATG Electronics instructions and guidelines, (iii) has been moved from its original installation, (iv) has been installed within an area that has exposure to sulfur or any area with high acidic compounds in use, (v) has been operated in an ambient temperature or humidity that is higher than the stated ambient operating range from datasheets, (vi) has been subjected to a lightning strike, power surge or overvoltage condition, (vii) has its LED Board subjected to static electricity due to failure to discharge same prior to connecting or disconnecting the lead from the LED board, (viii) was not installed and/or operated in accordance with ATG Electronics instructions and guidelines, (ix) has been mishandled, misused, abused, tampered with, modified or altered by anyone other than ATG ELECTRONICS, (x) has been subjected to abnormal stresses and operating conditions, or (xi) has been operated without overvoltage and lightning protection devices in place.

Limitations

Disclaimers & Limitations of Liability

The foregoing warranty is exclusive of all other statutory, written or oral warranties and no other warranties of any kind, statutory, by operation of law or course of performance, or otherwise, are given, herein expressed or otherwise received. EXCEPT AS EXPRESSLY PROVIDED ABOVE, ATG ELECTRONICS DISCLAIMS ALL REPRESENTATIONS, WARRANTIES AND CONDITIONS OF ANY KIND, EXPRESS OR IMPLIED, REGARDING THE LED PRODUCTS AND ITS SERVICES, INCLUDING, WITHOUT LIMITATION, THE IMPLIED WARRANTIES OF MERCHANTABILITY AND FITNESS FOR A PARTICULAR USE OR PURPOSE.

LIMITATION OF LIABILITY. Other than the obligation to repair or replace as provided above, ATG Electronics shall have no liability for any losses, expenses or damages as a result of the installation, use, inability to use, removal or replacement of any LED product. ATG Electronics will not under any circumstances whether as a result of breach of contract, breach of warranty, tort, strict liability or otherwise be liable for consequential, incidental, special or exemplary damages including but not limited to, loss of profits or revenues, loss of any other goods or associated equipment or damage to any associated equipment, cost of capital, cost of substitute products, facilities or services, down time cost or claims of claimant's customers. ATG Electronics liability on any claim of any kind for any loss or damages arising out of, resulting from or concerning any LED product, any aspect of this warranty or for any products or services furnished hereunder shall not exceed the price of the fixture which gives rise to the claim.

Return and Repair Procedures

All warranty requests and or questions are to be directed to ATG Electronics Customer Service Department (CSD) at 888-618-7298. If deemed necessary, the CSD will issue a Returned Merchandise Authorization (RMA) number which must be included on both the packing slip of the component or fixture being returned and on the outside of the box. You must include your name and contact information, including your email address, on the packing slip so that we can contact you easily. Each component or fixture must be packaged very carefully and properly so as to prevent damages in shipment and must be shipped freight prepaid. Please obtain a proof of delivery to ensure that the material is received.

Once the component or fixture has been received and tested, an evaluation report will be provided to the end user via email. This report will clarify the following:

- A) The component / fixture is covered under the warranty policy and will either be repaired or replaced.
- B) The component / fixture is not covered under the warranty policy and the reason for this determination.

If ATG ELECTRONICS determines that the component or fixture is covered under the warranty, then the appropriate repairs will be started or a replacement fixture will be manufactured and shipped. Please note that in the event the returned component or fixture is found not to be covered under this warranty, you may be subject to a labor charge for the evaluation process and will be responsible for all return shipping charges and fees. For components and fixtures determined to be covered under this warranty prior to the first anniversary of the Sale Date, the repaired or replacement component or fixture will be returned to you at no charge. You will be responsible for all other shipping charges.

No Labor Reimbursement

All components and fixtures determined to be covered by this warranty as provided above, will be repaired or replaced at no charge to the customer, however, except as expressly provided above with respect to recessed and linear fixtures during the first year, the customer must hire and pay for an electrician to remove and reinstall such components and fixtures. No labor costs will be covered for the removal or reinstallation of any components or fixtures. The warranty does not cover modifications, repairs or replacements, or the related labor or materials costs, that may be necessary to facilities or third party products in connection with the removal, repair, or replacement of any LED product under this warranty.