

General Description:

The NebuLite Nebula Area Light is a perfect fixture for medium height parking lot poles and a perfect replacement for all shoebox style flood light that widely used outdoors.

Construction:

- Stylish low-profile body that minimizes wind load and retains aesthetic pleasing appearance.
- Corrosion resistant polyester powder coat finish, available in custom colors.
- Independent driver compartment separated from light engine that optimizing driver lifespan.
- Cast aluminum structure that resists high shock and vibration.

Mounting:

- Multiple mounting options are available providing a solution for all outdoor applications like area, roadway, wall mount, flood, building accent and billboard lighting.

Electrical:

- High Power Factor, low THD UL listed driver with 4KVA surge protection.
- Universal line voltage input 120-277V, 347/480V optional
- FCC compliant
- 0-10V dimmable.

Optical:

- IES Type II, Type III, Type IV and Type V distribution patterns
- Optics are interchangeable and easily replaceable
- Optional house side shield/visor
- Full range CCT from 3000K to 5000K

Controls:

- NEMA twist lock photocontrol and receptacle
- Bi-Level occupancy sensor, 480V rated sensor also available

Working Temperature:

- Up to 140F thanks to advanced heatsink design

Warranty:

- 5 years' warranty for complete fixture

Listings:

ETL
FCC
DLC
RoHS



Ordering Information:

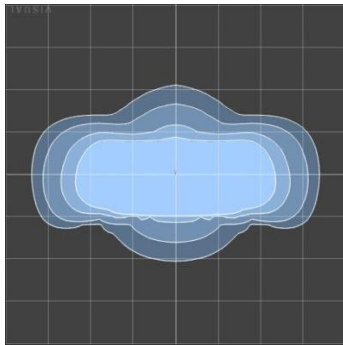
Family Model	Wattage	CCT	Optic	Color	Control	Mounting	Input Voltage
NBAL	25W=25W	50K=5000K	(blank)=Type IV	(blank)=Bronze, Std	(blank)=none, Std	ARM1 =Arm mount square pole	(blank)=120-277V, Std
=NebuLite	50W=50W	45K=4500K	T2 =Type II	BL =Black	OCC =Bi-Level Occupancy Sensor	ARM2 =Arm mount round pole	HV =347-480V
Nebula Area Light	80W=80W	40K=4000K	T3 =Type III	WH =White	PCN =NEMA Photocell	SF =Slipfitter 23/8"	
	100W=100W	35K=3500K	T5 =Type V	GR =Gray		SFB =Slipfitter 3"	
	150W=150W	30K=3000K				WM =Wall Mount	
		30K=3000K				TB =Trunnion Bracket	



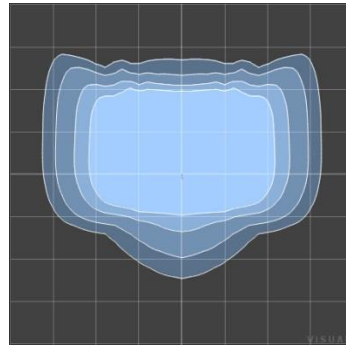
Specs:

Family Model	Lumens	Wattage	lm/W	CCT	CRI	PF	THD	Size	Weight	L70
NBAL-25W	3,100lm	25W	125lm/W	3000K-5000K	75+	>0.9	<15%	10 ⁷ / ₈ "x10 ³ / ₄ "x2"	10lb	>100,000h
NBAL-50W	6,200lm	50W	125lm/W	3000K-5000K	75+	>0.9	<15%	10 ⁷ / ₈ "x10 ³ / ₄ "x2"	10lb	>100,000h
NBAL-80W	10,000lm	80W	125lm/W	3000K-5000K	75+	>0.9	<15%	10 ⁷ / ₈ "x10 ³ / ₄ "x2"	10lb	>100,000h
NBAL-100W	12,500lm	100W	125lm/W	3000K-5000K	75+	>0.9	<15%	13 ¹ / ₂ "x13 ¹ / ₂ "x2 ³ / ₈ "	15lb	>100,000h
NBAL-150W	18,700lm	150W	125lm/W	3000K-5000K	75+	>0.9	<15%	13 ¹ / ₂ "x13 ¹ / ₂ "x2 ³ / ₈ "	15lb	>100,000h

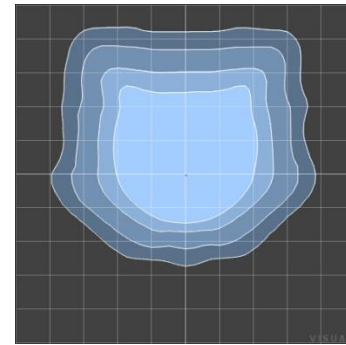
Photometrics:



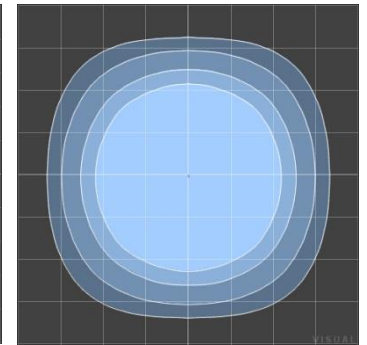
Type II



Type III



Type IV

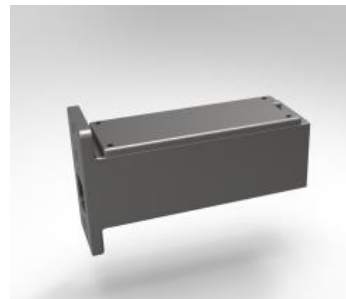


Type V

Mounting Options:



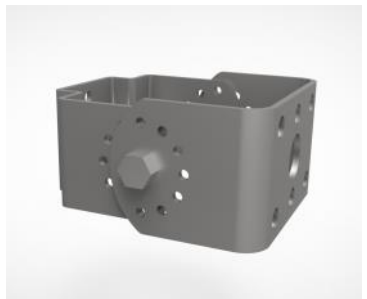
Slipfitter 2³/₈" & 3"



Arm Mount



Wall Mount



Trunnion Bracket

MOUNTING CONFIGURATION

