

BRK-LED56-SGR-ECO 5" / 6" Slope Ceiling Gimbal



Project:	
Type:	
Catalog #:	

STANDARD



APPLICATIONS

6" Slope Gimbal solution with integrated LED power supply and thermal management system combined in a single compact unit designed to fit most standard 6" Slope recessed cans.

ILLUMINATION

- Long life LEDs with up to 50,000 hours at 70% lumen maintenance.
- Choice of 2700K (± 145), 4000K (± 275) color temperature with 80 CRI.
- Produces 975 lumens output from luminaire.
- Uses 1.18W high power, high quality LEDs.

ELECTRICAL

- Dimmable to 10% with most dimmers.

Lutron Maestro C-L	MACL-153MR
Leviton Sureslide	Cat.No.6674
Lutron	PD-6WCL
Lutron SureSlide	Cat.No.6633-P
Lutron Diva	DV-600P
Leviton SureSlide	NO.6631
Legrand Harmony	HCL453PTCCCV6

- Save 75% compared to incandescent sources.
- High efficiency driver with a power factor $\geq .90$ with input power of 120V, 50-60Hz.
- Built-in LED Driver.
- Power consumption of 13 watts.
- Operation temperature of -20°C thru 40°C (-4°F thru 104°F).

MOUNTING

- Easy installation with adjustable torsion spring.
- Torsion spring is designed to fit into 6" slope ceiling housing automatically without changing mounting tab.
- No tools required for installation.



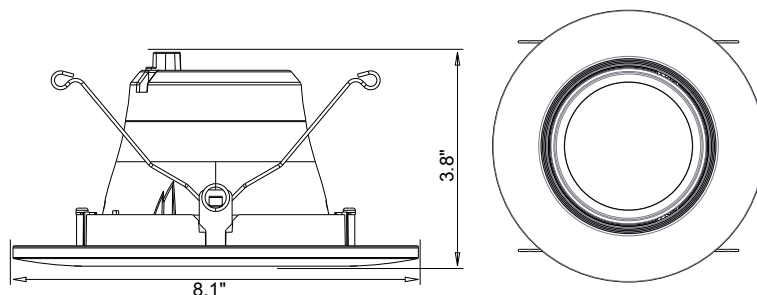
HOUSING

- Compatible with most 6" Slope housings (30° Max. TILT).
- Compatible with insulated, non-insulated, and slope ceilings.
- Durable thermoplastic construction.
- E26 medium screw-base Edison connector provides easy retrofit of incandescent housings.

WARRANTY/LISTING

- Tested in accordance with IESNA LM79 & LM80.
- ETL Listed for damp location, US and Canada.
- Energy Star certified.
- Passes FCC Class B.
- Meets State of California Title 24 requirements.
- Five year warranty on all electronics and housing.

DIMENSIONS



ORDERING INFORMATION

MODEL	DESCRIPTION	KELVIN RATING	LUMENS
BRK-LED56-SGR-27K-ECO	SGR SLOPE GIMBAL	27K 2700 K	975
BRK-LED56-SGR-4K-ECO	SGR SLOPE GIMBAL	4K 4000 K	975