



JOB NAME:

CAT#:

TYPE:

### APPLICATIONS

Medium body decorative strip with reflectors and basket options for offices, conference rooms, retail and utility areas requiring concentrated illumination in a commercial quality configuration with more style. By choosing the wattages and basket materials, the lighting designer can control the light intensity.

Housing is die-formed and embossed code 22 gauge steel. Body finish is high reflectance baked white enamel. Wiring knockouts are provided on back and end of housing. Reflectors attach with quarter turn fasteners; no tools required for driver access. End plate doubles as coupler for continuous row mounts. Perforated baskets are made of cold rolled steel treated with rust inhibitor. Perforated metal parts are post painted with durable baked polyester coat. Each piece is formed by our state-of-the-art multi-radii machine for consistency. Listed by and bears ETL label.

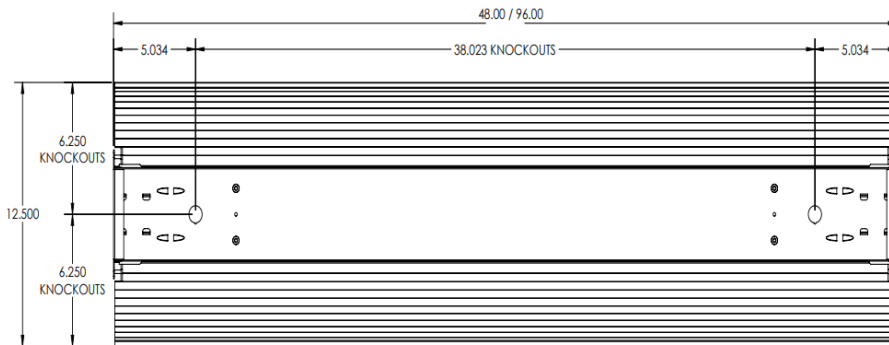


### FEATURES & BENEFITS

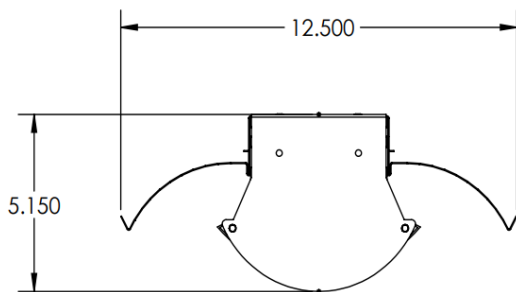
- Surface mount, chain hung, stem mount, cable mount
- Every fixture is individually tested
- ETL listed for damp location
- Min CRI 82

### DIMENSIONS

**Back**



**End**



Dimensions and specifications subject to change without notice.





**JOB NAME:**

**CAT#:**

**TYPE:**

**ORDERING**

EXAMPLE: DIS 48 LED 32 DMV PF 30 XW EM CS6 WP

DIS		LED							
1. SERIES	2. SIZE	3. GEAR	4. WATTAGE/LUMENS	5. DRIVER	6. LENS	7. CRI			
<b>DIS</b>	<b>48</b> 48" <b>96</b> 96"	<b>LED</b>	<b>48 inch</b> <b>32</b> 32 Watts 3450 Lumens <b>48</b> 48 Watts 4800 Lumens <b>57</b> 57 Watts 5400 Lumens <b>96 inch</b> <b>96</b> 96 Watts 9600 Lumens <b>114</b> 114 Watts 10800 Lumens <b>144</b> 144 Watts 14000 Lumens	<b>DMV</b> 120-277V Multivolt 0-10V Dimmable <b>SDMV</b> Step dimming Multivolt <b>D347V</b> 347VAC 0-10V Dimming <b>D120</b> Triac Dimming 120VAC <b>D277</b> Triac Dimming 277VAC <b>TDMV</b> Triac Dimming at 120VAC Multi-Volt 120-277VAC <b>LUT</b> Lutron Driver (See Lutron Chart for Suffix)	<b>PF</b> Perforated Basket <b>FF</b> Fine Fluted Lens Basket <b>SW</b> Smooth White Lens Basket	<b>(Blank)</b> 80 CRI <b>9</b> 90 CRI			

8. COLOR TEMP		9. REFLECTOR(O)'		10. EMERGENCY (O)'		11. CORD (O)'		12. WHIP (O)'	
<b>30</b> 3000K <b>35</b> 3500K <b>40</b> 4000K <b>50</b> 5000K	<b>XW</b> White Steel	<b>EM</b> 10W, 1200 Lumen battery backup <b>EM5</b> 5W, 600 Lumen battery backup	<b>CS6</b> 6' Cord 18/3 <b>CS12</b> 12' Cord 18/3	<b>WP</b> 6 ft. 3 wire 18 gauge whip <b>WP10</b> 4 ft. 3 wire 18 gauge whip					

*Cord & Whip Ordering Chart (Add to End of Fixture Part Number)						
Part No.	# of Wires	Length	End Fitting	Finish	Voltage	Amps (TL Only)
WP - Whip CS - Cordset	(Blank) 3 Wire 4 - 4 Wire 5 - 5 Wire 6 - 6 Wire	(Blank) 6 feet 8 - 8 feet 10 - 10 feet 12 - 12 feet 15 - 15 feet	(Blank) No Plug P* - Standard Plug TL* - Twist Lock	BK - Black WH - White	(Blank) 120-277V 120 - 120V 277 - 277V 347 - 347V 480 - 480V	15 - 15 Amps 20 - 20 Amps

**ACCESSORIES**

- A144-2** (2) V-Hooks & (2) 2ft chains (replace "2" with length of chain required)
- A-2SCS24WH** Two stem kits with 24" stem, canopy and mounting hardware for 4' fixture

**NOTES:**

(O) is optional

Dimensions and specifications subject to change without notice.