

FL2103D-A FL2105D-A FL2106D-A



Vanity

Features

Housing

Die-formed Cold-rolled Steel

Optical

Shade: High Transmission Acrylic Create Excellent Light Distribution and Uniformity

LED: High Efficiency, High CRI, Binned and Mixed to Reach Uniform Light.

Electrical

High Power Factor, Low THD

Lamp

LED Type: Built-in (Color Temperature Option – 3000K, 3500K, 4000K, 5000K)

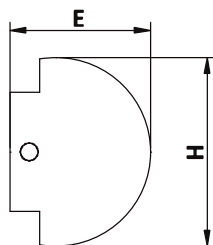
LED MCT Type: Multiple Color Temperature – 3000K, 3500K, 4000K

Certification

ETL/cETL Listed

Warranty

5 Years Warranty on Driver and LED Module



LED Type

Model	Input Voltage	Input Wattage	LED CT / CRI	Lumen (TYP)	Dimension (L X H X E)	Finish	Shade	Energy Star
FL2103D-A-xxxxK	120V ~ 277V	23W	3000K / >80	2200	24.5" x 5.7" x 4.5"	ORB	Acrylic	Yes
FL2105D-A-xxxxK	120V ~ 277V	36W	3000K / >80	3260	36.5" x 5.7" x 4.5"	ORB	Acrylic	Yes
FL2106D-A-xxxxK	120V ~ 277V	46W	3000K / >80	4600	48.5" x 5.7" x 4.5"	ORB	Acrylic	Yes
FL2103D-A-MCT	120V ~ 277V	23W	3000K / >80	2200	24.5" x 5.7" x 4.5"	ORB	Acrylic	Yes
FL2105D-A-MCT	120V ~ 277V	36W	3000K / >80	3400	36.5" x 5.7" x 4.5"	ORB	Acrylic	Yes
FL2106D-A-MCT	120V ~ 277V	46W	3000K / >80	4600	48.5" x 5.7" x 4.5"	ORB	Acrylic	Yes