

# FL5524D-C FL5539D-C FL5554D-C



## LED Vanity

### Features

#### Housing

Die-formed Cold-rolled Steel  
 Finish Option: - 30 Oil Rubbed Bronze, - 62 Satin Nickel

#### Optical

Shade: High Transmission Acrylic Create Excellent Light Distribution and Uniformity  
 LED: High Efficiency, High CRI, Binned and Mixed to Reach Uniform Light.  
 LED CRI > 80

#### Electrical

High Power Factor, Low THD

#### Lamp

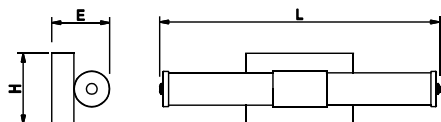
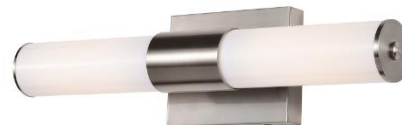
LED Type: Built-in (Color Temperature Option – 3000K, 3500K, 4000K, 5000K)  
 MCT Type: Adjustable Multiple Color Temperature (3000K, 3500K, 4000K)

#### Certification

ETL/cETL Listed, Energy Star

#### Warranty

5 Years Warranty on Driver and LED Module



### LED Type

Model	Input Voltage	Input Wattage	LED CT / CRI	Lumen (TYP)	Finish	Dimension (L X H X E)	Energy Star
FL5524D-xxxxK-C	120V	17W	3000K / >80	1520	Satin Nickel / Acrylic	25.2" x 4.8" x 3.8"	Yes
FL5539D-xxxxK-C	120V ~ 277V	24W	3000K / >80	2110	Satin Nickel / Acrylic	37.0" x 4.8" x 3.8"	Yes
FL5554D-xxxxK-C	120V ~ 277V	36W	3000K / >80	3220	Satin Nickel / Acrylic	48.8" x 4.8" x 3.8"	Yes
FL5524D-C-MCT	120V	17W	3000K / >80	1520	Satin Nickel / Acrylic	25.2" x 4.8" x 3.8"	Yes
FL5539D-C-MCT	120V ~ 277V	24W	3000K / >80	2110	Satin Nickel / Acrylic	37.0" x 4.8" x 3.8"	Yes
FL5554D-C-MCT	120V ~ 277V	36W	3000K / >80	3220	Satin Nickel / Acrylic	48.8" x 4.8" x 3.8"	Yes