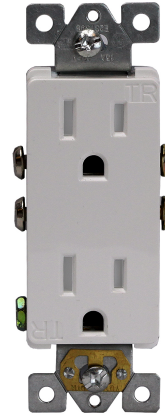


### Residential Grade Decorator Receptacle



Model No.: 61501-TR

**Description:** Built-in protective shutter mechanism designed to prevent the insertion of foreign objects into the receptacle contact openings. Clearly visible "TR" markings on the device with shallow design for maximum wiring room in box

**Features:**

- High impact-resistant thermoplastic cover and body
- Flammability UL94, V2 Rating.
- Push-in and Side terminals for quick installation

**Specifications:**

Amperage..... 15Amp  
Color Availability.....White, Almond, Black, Brown, Ivory, Light Almond and Gray  
Voltage.....125VAC  
Termination.....Rear Push In and Side  
Receptacle Material .....Thermoplastic  
Standards and Certifications.....UL Listed

**Testing & Code Compliance**

