



## In-Wall Vacancy Sensor

**Model No: HMVS-J**

### Description

The passive infrared sensors work by detecting the difference between heat emitted from the human body in motion and the background space. The sensor switch can turn a load on and hold it as long as the sensor detects occupancy. After no motion is detected for the set time delay, the load turned off automatically.

### Features

- Manual ON / automatically OFF (Vacancy Mode)
- Time delay from 15 seconds (test mode) to 20 minutes
- No neutral wire required

### Testing & Code Compliance



### Specifications

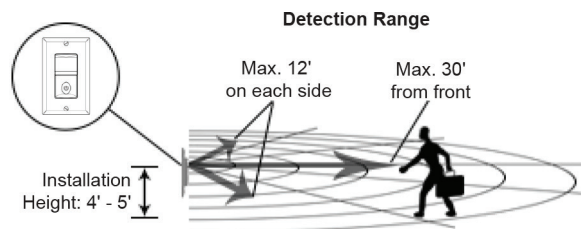
Voltage .....	120 Vac, 60 Hz
Incandescent .....	500W
Fluorescent .....	500 VA
LED .....	150W
Motor .....	1/8 HP
Time delay .....	15 Sec to 20 Mins
Operating Temperature .....	32 F to 131 F

### \*Coverage Area

Best: 180 sq.ft.  
 Regular: 450 sq.ft.  
 Maximum: 700 sq.ft.

As illustrated in Figure 1, The HMVS-J has a 180° detection range with a maximum distance of 30' detection in front of the sensor and 12' on the sides providing 700 sq. ft. of coverage. For maximum results, the sensor must be properly installed between the height of 4' to 5' and away from obstructions such as walls, furniture and transparent barriers like Low-E glass.

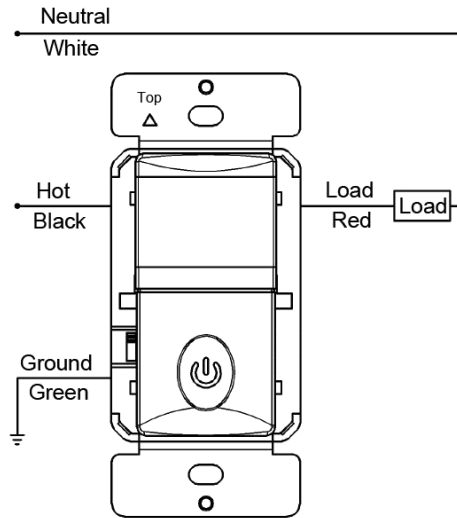
Figure 1



# Installation & wiring

1. Connect RED wire from sensor to the LOAD wire.
2. Connect BLACK wire from sensor to the HOT wire.
3. Connect GREEN wire from sensor to the GROUND wire.

NEUTRAL wire NOT REQUIRED for switch.

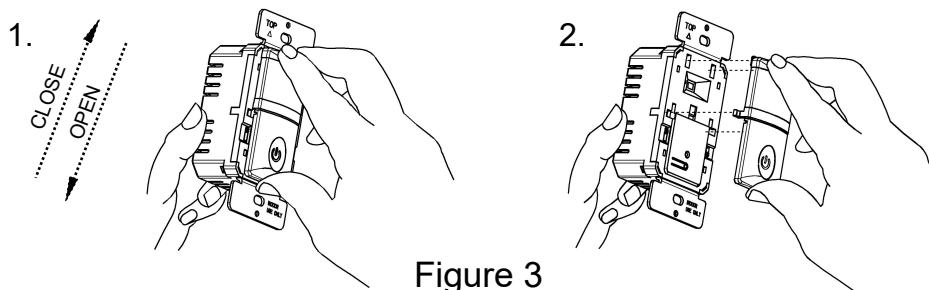


**Figure 2**  
Wiring Diagram

2. Device "TOP" upward.
3. Gently position wires in wall box, attach sensor switch to the box.
4. Restore power at circuit breaker or fuse, wait one minute.
5. Locate the toggle switch on both sides of the top cover to perform test and adjustment.

## Changing the color of your switch

Your switch ships with top cover attached. It is convenient for users to change the top cover. Please proceed as follows:

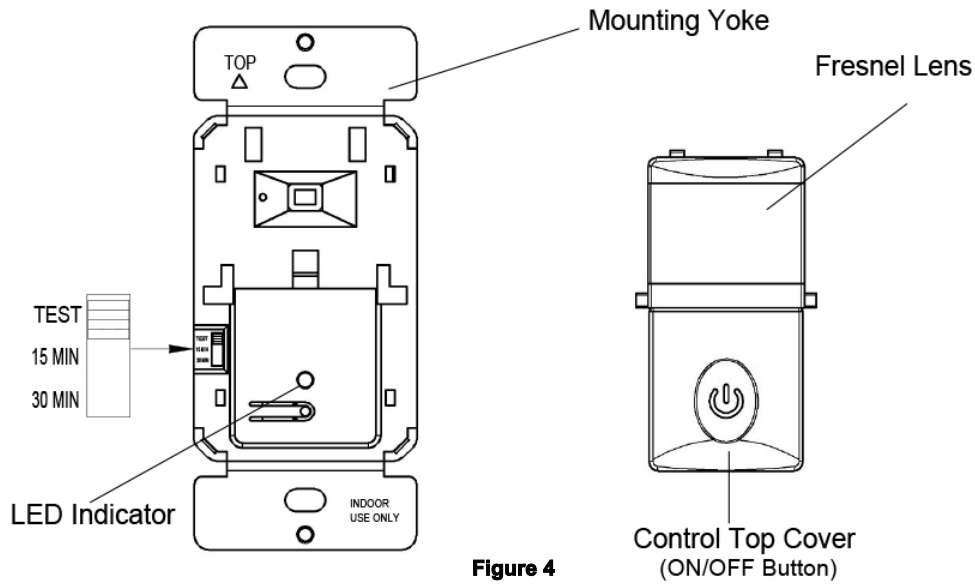


**Figure 3**

Push down top cover to release

Line up tabs and push up to attach

# Adjustment



**Figure 4**

## Band switch prescription

Mode	Description	Function of ON/OFF button
VAC	Vacancy Mode: Manual On only, Automatic Off after set time delay.	Manually push On/Off the load.

## Time delay setting

Default position	15 Seconds (Test mode)		
Adjustable	10 Seconds	20 Minutes	