

LED EPL-2100Hv

Class: LED Vertical PL / Hybrid (A+B)



Product Description

The Euri Lighting LED vertical EPL-2100Hv features hybrid (Type A+B) technology giving it the benefit of working with a (compatible) ballast or AC 120-277 line voltage. This 12-Watt PL lamp replaces a 26-Watt compact fluorescent lamp (CFL). It's soft white light (3000K), 1100 Lumens making it ideal where task lighting is needed such as kitchens, living rooms, and dining rooms due to its uniform light. Enjoy 50,000 hours of continuous light distribution, and other features such as: damp rated, reduced maintenance expenses, and energy efficiency.



Estimated Energy Cost: \$1.44 per year

*Note: Design, features and specifications subject to change without notice. Some features may not be available on all models. For more information please visit: www.eurilighting.com or call 1-310-787-1100

LED Hybrid PL

Hybrid technology reduces maintenance expenses and allows adaptable installation methods whether a ballast is present or not

Specifications

Input Power	Input Voltage	Lumen Output	Beam Angle	Center Beam	CCT
12 W	AC120-277V	1100 lm	140°	N/A	3000 K
CRI	Luminous Efficacy	Power Factor	Input Current	Base/Cap	Lamp Lifespan
80	90 lm/W	0.9	0.4 A	G24Q	50,000 Hrs.

Product Features



Energy Efficient



Damp Rated

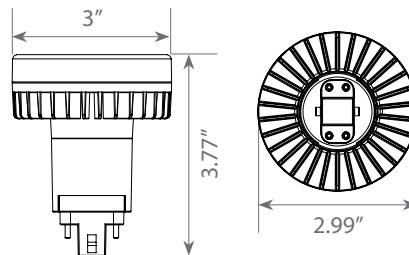


AC120 - 277 V

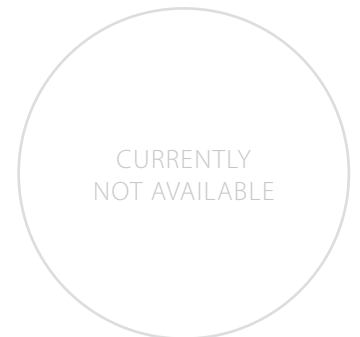


Non-Dimmable

Product Dimensions



Product Photometric Data



Euri Lighting | A Division of IRTRONIX Inc.