



General Description:

The EX-LITE CB is a cobra head style LED luminaire designed for exterior roadway, street, and area lighting. It has a heavy-duty die cast aluminum housing with external cooling fins to maximize heat dissipation. Easy for maintenance with tool-less entry.

Construction:

- Corrosion resistant polyester powder coat finish, available in custom colors.
- Cast aluminum structure that resists high shock and vibration.
- External cooling fins to maximize heat capacity.
- Toolless entry to driver compartment, easy maintenance.
- Came with NEMA photocell and receptacle as standard.

Mounting:

- Slide into any pole less than 2 1/2" Tennon with only two hex bolts.

Electrical:

- High Power Factor, low THD UL listed driver with 10KV surge protection.
- Universal line voltage input 120-277V, 347/480V optional
- FCC compliant
- 0-10V dimmable optional

Optical:

- IES Type II distribution patterns.
- Full range CCT from 3000K to 5000K.

Warranty:

- 5 years' warranty for complete fixture.

Listings:

- ETL
- FCC
- DLC
- RoHs
- IP65



Ordering Information:

Family Model	Wattage	CCT	Optic	Color	Mounting	Input Voltage
CB	100W=100W	50K=5000K	(blank)=Type II, Std	(blank)=Silver Gray, Std	(blank)=Tennon Mount, Std	(blank)=120-277V, Std
	150W=150W	40K=4000K		BZ=Bronze		HV=347-480V
		30K=3000K		WH=White		

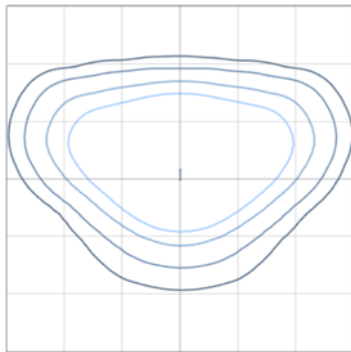
PROJECT NAME: _____ CATALOG NUMBER: _____

NOTES: _____ FIXTURE TYPE: _____

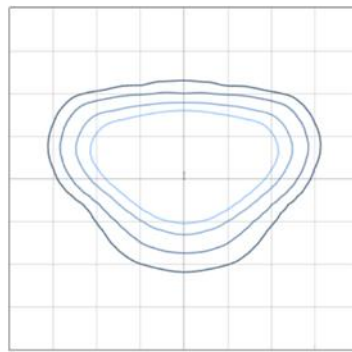
Specs:

DLC Model#	Wattage	Lumens	lm/W	CCT	CRI
WSD-ST10W	100W	15,000lm	150lm/W	3000K/4000K/5000K	75+
WSD-ST15W	150W	22,500lm	150lm/W	3000K/4000K/5000K	75+

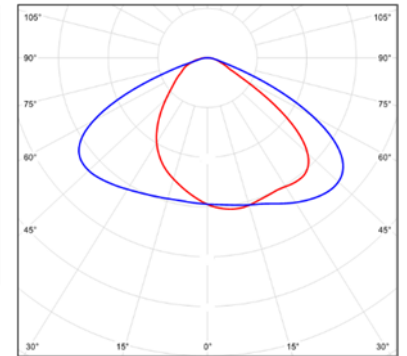
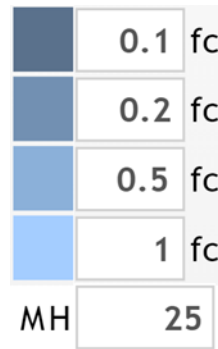
Photometrics:



100W@25FT



150W@25FT



Dimensions:



Lighting Layout:

