

General Description:

The WPC is a Cut-Off style wall pack designed to eliminate light pollution while using forward-throw optic to maximize light utilization.

A wide range of control options are available including Occ sensor, Photocell and Emergency backup.

Construction:

- Heavy duty aluminum housing
- Forward-throw optic
- IP65 for wet and damp locations

Mounting:

- Regular in-wall J-box

Electrical:

- High Power Factor, low THD UL listed driver with 5KV surge protection.
- Universal line voltage input 120-277V, 347/480V optional
- 0-10V dimmable optional

Optical:

- On-Chip forward-throw optic to maximize light utilization.

Controls:

- Button style eye photocell.
- Bi-Level Occupancy sensor.
- Build-in emergency backup.

Warranty:

- 5 years warranty for complete fixture

Listings:

- UL
- DLC
- RoHs
- IP65



Order Info:

Model	Wattage	CCT	Control	Color	Voltage
WPC	28W=28W	30K=3000K	(blank)=none, Std	(blank)=Bronze, Std	(blank)=120/277VAC, Std
Cut-Off Wall Pack	40W=40W	40K=4000K	PCB =Button Photocell	BL =Black	HV =347/480VAC
	60W=60W	50K=5000K	OCC01 =On/Off Sensor	WH =White	
	80W=80W		OCC02 =Bi-Level Sensor	GR =Gray	
			EM =Emergency Backup		

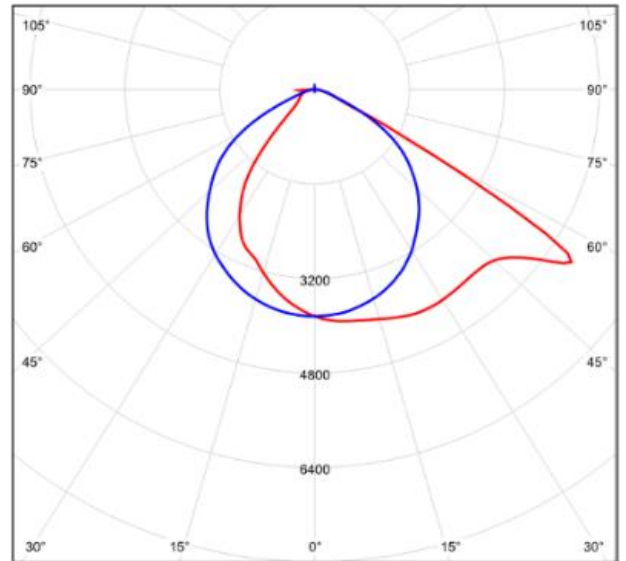
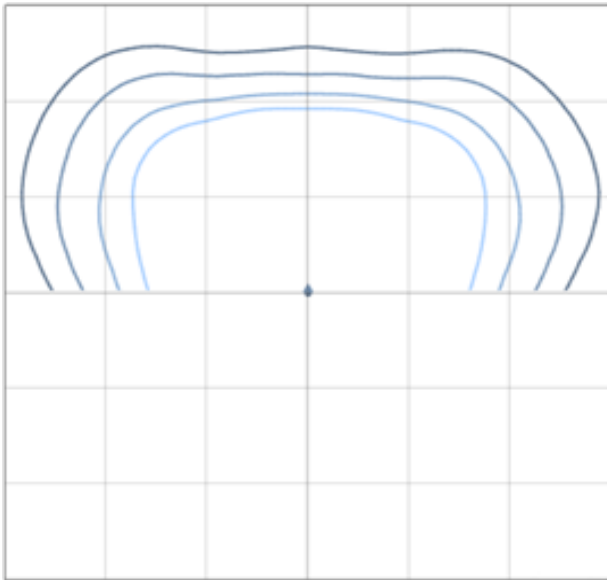
PROJECT NAME: _____ CATALOG NUMBER: _____

NOTES: _____ FIXTURE TYPE: _____

Specs:

Family Model	Wattage	Lumens	lm/W	CCT	CRI
WPC-28W	28W	3,900lm	140lm/W	3000K/4000K/5000K	80
WPC-40W	40W	5,600lm	140lm/W	3000K/4000K/5001K	80
WPC-60W	60W	8,400lm	140lm/W	3000K/4000K/5002K	80
WPC-80W	80W	11,200lm	140lm/W	3000K/4000K/5003K	80

Photometrics:



Lighting Layout:

