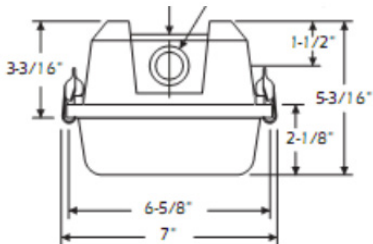


# Vaportight Strip

## DIMENSIONS



## APPLICATION

The VTS series is a gasketed luminaire that provides maximum light output with durable construction. It is ideal for both interior and exterior areas that have cold and moist conditions. The primary benefits of this fixture are trouble-free access to ballast and wiring, various mounting options, and stainless steel latches that enhance a firm seal. Primary applications include chilled storage and manufacturing facilities, food processing areas, parking garages, and outdoor overhangs.

## FEATURES

- Rugged light gray polycarbonate housing with continuous paired gasket for an airtight seal, keeping out moisture, dust and humidity.
- Impact resistant polycarbonate lens and snap fit stainless steel latches provide airtight seal.
- Suitable for suspension by chain or cable. Can also be surface mounted.
- Captive, stainless steel snap-action clips secure lens to housing.
- NEC Required Ballast Disconnect is Standard on MV and HV Models

## QUICK SHIP

VTS-2-32-120  
VTS-2-32-MV

## ORDERING INFORMATION

Example Model Number: VTS-2-32-MV-EM14

## ACCESSORIES

SERIES	# OF LAMPS	LAMP TYPE	VOLTAGE	BALLAST TYPE	BALLAST FACTOR	OPTIONS
VTS						
	4' Housing 1- 1 Lamp <sup>1</sup> 2- 2 Lamp 3- 3 Lamp <sup>1</sup> 8' Housing 2T- 2 Lamp Tandem <sup>1</sup>	28- 28W T5 <sup>1</sup> 32- 32W T8 54- 54W T5 <sup>1</sup>	120- 120V MV- 120-277V HV- 347/480V	(Blank)- Instant Start <sup>1</sup> PS- Programmed <sup>1</sup>	(Blank)- Normal <sup>1</sup> H- High <sup>1</sup> L - Low <sup>1</sup>	EM5- 450 Lumen Battery Backup EM7- 700 Lumen Battery Backup EM14- 1400 Lumen Battery Backup EM30- 3000 Lumen Battery Backup WG- Wire-guard

T8 and T5 lamps (all color temps. available) CH-3.5 AC-10
---

Notes:  
<sup>1</sup>Made to order items. Minimum 90 day lead time. Minimum 500 order quantity.  
<sup>2</sup>Requires MV Ballast