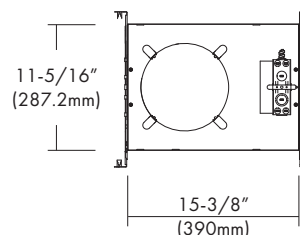
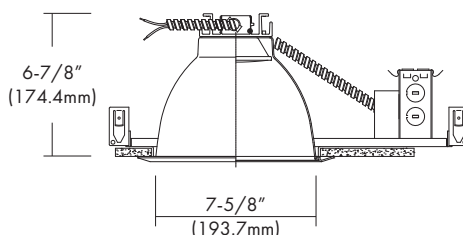


LEDH-CFK8

120V-277VAC LED 8", Non-IC, Commercial Flat Frame-in Kit
Down Light with interchangeable Reflector Trims

Catalog #		Type
Project		Date
Prepared by		

8" LED Commercial Flat Frame-in Kit



Ceiling Cut-out : 8"-1/8"

DESCRIPTION

The LEDH-CFK8 is an 8" LED, Non-IC Commercial Flat Frame-in Kit and is available with multiple Trim styles. Designed for use in non-insulated ceilings, Insulation material must be kept a minimum of 3" from fixture. Available with a 14W, 23W, 30W or 45W high efficacy LED engine and universal, dimmable drivers. The special optical diffuser produces high lumen transmission and even illumination. Suitable for Wet Locations.

DESIGN FEATURES

Mounting Frame

- Galvanized steel construction.
- Housing adjusts for ceilings up to 1-1/4" thick.

LED Module & Trim

- Painted, extruded aluminum heat sink designed to facilitate efficient heat dissipation for superior thermal management and reliability.
- LED engine includes LED, heat sink and lens assembly.
- Heavy gauge aluminum reflector anodized in clear haze or white paint finishes. Multiple trim styles and finishes are available.

LED Driver

- Universal, 120~277V input, high efficacy drivers with dimming capability by ① a Triac 120V low voltage electronic dimmer switches or ② 0-10V, Triac & ELV dimmer switches.
- Drivers feature power factor >.90, THD <20% with integral thermal protection to sense over temperature or electrical issues.
- Driver mounts externally to the module to allow future replacement or upgrading if desired.
- Optional Lutron Hi-lume A-Series, LED drivers and EcoSystem 5-Series LED drivers are available. Lutron drivers provide flicker-free, smooth, continuous dimming down to 1% for Hi-lume and 5% for EcoSystem. (Contact factory for dimming system requirements)

Junction Box

- Listed for through branch circuit wiring. (Max.8 No 12 AWG 90°C branch circuit conductors: 4 in, 4 out)
- (5) 1/2" knockouts with pry-out slots and (4) knockouts with Romex cable clamps.
- Ground wire provided on J-box.

Bar Hangers

- 24" Bar Hangers provide stability and support on joists and T-Bar Grid ceilings.
- Housing can be positioned at any point within 24" joist spacing.
- Score lines allow easy "bend & snap-off" shortening for 12" joist spacing.

Options

- Emergency battery back-up : Available in mounted to fixture or remote, adjacent to luminaire (consult with factory for space requirements).

Limited Warranty

- LED Module: 5 years/50K hours
- Product/Driver: 3 years

Listing

- cETLus Wet Location
- ENERGY STAR
- California Title 24

SPECIFICATION				
Input Voltage	120-277VAC			
Wattage (+/-5%)	14W	23W	30W	45W
Lumen (+/-5%)	960	1,760	2,280	3,340
Efficacy (LPW)	68.6	76.5	76	74.2
Beam Angle	63°	64.2°	63.3°	62.9°
CRI (Typical)	80, 90			
CCT (Color +/-5%)	2700K, 3000K, 3500K, 4000K			
Dimming	0-10V, ELV & TRIAC Optional Lutron Drivers			
LED Module	5 yr/50K hr			
Environment	Wet Location			

Triac Approved Dimmers
<ul style="list-style-type: none"> * Lutron: NovaT (Ntclv 300 & 600) Divia (Dvelv-300P&303P) * Leviton: Acenti: Ate06-1Lw * Leviton Trimatron #705W (incandescent)
0-10V Approved Dimmers
<ul style="list-style-type: none"> * Lutron: Nova® 0-10V : NTFTV Divia® 0-10V : DVTV * Leviton: Decora 0-10V : IP710DL
Consult tech. service or factory for additional dimmers

* Provided: Easy-quick connector case (patent pending)

8" LED Commercial Flat Frame-in Kit

HOUSING COMPATIBILITY for the LEDH-CFK8 RETROKIT ONLY

LEDH-CFK8 ETL Listed for installation in the following Lumtech standard architectural housings;

- **8"** : FH-VC8, FH-VA8, FH-VAR8, FH-HA8, FH-HAR8, FH-HC8, IH-VF8300, IH-VA8300, IH-VAR8300, IH-HF8300, IH-HA8300, IH-HAR8300, MH-VF8, MH-VA8, MH-VAR8, MH-(HF8, HA8, HAR8)

LEDH-CFK8 ETL Listed for retrofit in the following 8" architectural housing;

- **Halo** : PD7V142E, PD7V120, PD7V501E, PD7V701E, PD7V1001E, PD7V70XIE, PD7V100X1E
- **Juno** : CV8-126/32/42T, TC908, MX8-(70,100), M8-(70,100)
- **Lithonia** : LP8F, CCR82, LP8H, LP8

TRIM

* Wide beam reflector is standard. Also available narrow beam in reflector(consult with factory).



LEDT-R84
Specular Open Reflector

LEDT-R814
Baffle w / Reflector

LEDT-R841
Baffle w /
Regressed Lens

LEDT-R822
Reflector w /
Regressed Lens

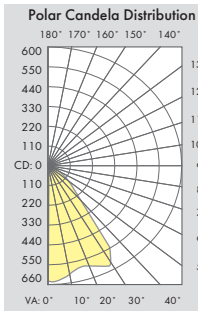
LEDT-R836
Wall Wash w /
Reflector Plate

LEDT-R840
Reflector w /
Frosted Floating Lens

* All trims are rated for damp location and regressed lens trims are wet location listed.

PHOTOMETRIC REPORT

* Contact Factory for IES File

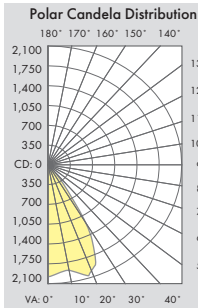


Illuminance at a Distance

	Center Beam FC	Beam Width
2.0ft	163.9 fc	3.1 ft
4.0ft	41.0 fc	6.3 ft
6.0ft	18.2 fc	9.4 ft
8.0ft	10.2 fc	12.5 ft
10.0ft	6.6 fc	15.7 ft
12.0ft	4.6 fc	18.8 ft

Beam Spread: 63.3°

[LEDH-CFK8-14-830+LEDT-R84]

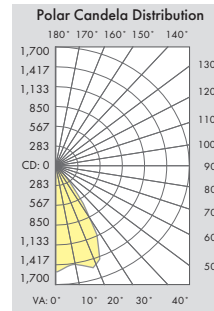


Illuminance at a Distance

	Center Beam FC	Beam Width
2.0ft	497.7 fc	2.5 ft
4.0ft	124.4 fc	4.9 ft
6.0ft	55.3 fc	7.4 ft
8.0ft	31.1 fc	9.9 ft
10.0ft	19.9 fc	12.3 ft
12.0ft	13.8 fc	14.8 ft

Beam Spread: 63.3°

[LEDH-CFK8-30-830+LEDT-R84]

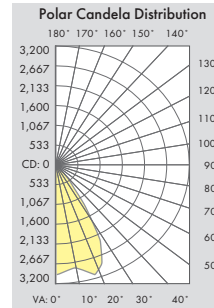


Illuminance at a Distance

	Center Beam FC	Beam Width
2.0ft	378.7 fc	2.5 ft
4.0ft	94.7 fc	5.0 ft
6.0ft	42.1 fc	7.5 ft
8.0ft	23.7 fc	10.0 ft
10.0ft	15.1 fc	12.5 ft
12.0ft	10.5 fc	15.0 ft

Beam Spread: 64.2°

[LEDH-CFK8-23-830+LEDT-R84]



Illuminance at a Distance

	Center Beam FC	Beam Width
2.0ft	732.2 fc	2.4 ft
4.0ft	183.1 fc	4.9 ft
6.0ft	81.4 fc	7.3 ft
8.0ft	45.8 fc	9.8 ft
10.0ft	29.3 fc	12.2 ft
12.0ft	20.3 fc	14.7 ft

Beam Spread: 62.9°

[LEDH-CFK8-45-830+LEDT-R84]

Ordering Information

Model	-Watts	-CRI	Color Temp.**	Driver*	Trim	-Reflector Finish**	Baffle Finish for LEDT-R814 & R841	Optional Metal Trim Ring Finish
LEDH-CFK8 = 8", Non-IC, Commercial Flat Frame-in Down Light Kit	-14 = 14W	-8 = 80	27 = 2700K	UTD = 120-277VAC, Triac: 10-100% Dimming (14, 23 & 30W only) UZTD = 120-277V, 0-10V, Triac & ELV: 1-100% Dimming L1D = Lutron Hi-lume 1% Dimming L5D = Lutron EcoSystem 5% Dimming *- Option -EM = Emergency battery backup	LEDT-R84	-HC = Haze Clear	-WH = White	-WH = White Plastic Trim Ring (Standard)
	-23 = 23W	-9 = 90	30 = 3000K		LEDT-R814	-WH = White Painted	-BK = Black	-WMR = White Metal Ring
	-30 = 30W		35 = 3500K		LEDT-R841			-SN = Satin Nickel
	-45 = 45W		40 = 4000K		LEDT-R822			-CH = Chrome
					LEDT-R836			-SF = Polished Self-Flange (for Open or Wall Wash Reflectors ONLY)
					LEDT-R840			

Example : LEDH-CFK8-14-830UTD

LEDT-R84-HC-WH

** Consult factory for other Color Temperatures and Finishes