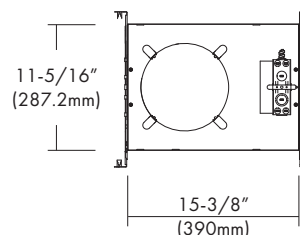
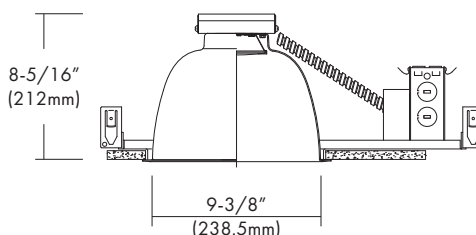


LEDH-CFK9

120V-277VAC LED 9", Non-IC, Commercial Flat Frame-in Kit
Down Light with interchangeable Reflector Trims

Catalog #		Type
Project		Date
Prepared by		

9" LED Commercial Flat Frame-in Kit



Ceiling Cut-out : 9"-3/4"

DESCRIPTION

The LEDH-CFK9 is a 9" LED, Non-IC Commercial Flat Frame-in Kit and is available with multiple Trim styles. Designed for use in non-insulated ceilings, Insulation material must be kept a minimum of 3" from fixture. Available with a 14W, 23W, 30W or 45W high efficacy LED engine and universal, dimmable drivers. The special optical diffuser produces high lumen transmission and even illumination. Suitable for Wet Locations.

DESIGN FEATURES

Mounting Frame

- Galvanized steel construction.
- Housing adjusts for ceilings up to 1-1/4" thick.

LED Module & Trim

- Painted, extruded aluminum heat sink designed to facilitate efficient heat dissipation for superior thermal management and reliability.
- LED engine includes LED, heat sink and lens assembly.
- Heavy gauge aluminum reflector anodized in clear haze or white paint finishes. Multiple trim styles and finishes are available.

LED Driver

- Universal, 120~277V input, high efficacy drivers with dimming capability by ① a Triac 120V low voltage electronic dimmer switches or ② 0-10V, Triac & ELV dimmer switches.
- Drivers feature power factor >.90, THD <20% with integral thermal protection to sense over temperature or electrical issues.
- Driver mounts externally to the module to allow future replacement or upgrading if desired.
- Optional Lutron Hi-lume A-Series, LED drivers and EcoSystem 5-Series LED drivers are available. Lutron drivers provide flicker-free, smooth, continuous dimming down to 1% for Hi-lume and 5% for EcoSystem. (Contact factory for dimming system requirements)

Junction Box

- Listed for through branch circuit wiring. (Max.8 No 12 AWG 90°C branch circuit conductors: 4 in, 4 out)
- (5) 1/2" knockouts with pry-out slots and (4) knockouts with Romex cable clamps.
- Ground wire provided on J-box.

Bar Hangers

- 24" Bar Hangers provide stability and support on joists and T-Bar Grid ceilings.
- Housing can be positioned at any point within 24" joist spacing.
- Score lines allow easy "bend & snap-off" shortening for 12" joist spacing.

Options

- Emergency battery back-up : Available in mounted to fixture or remote, adjacent to luminaire (consult with factory for space requirements).

Limited Warranty

- LED Module: 5 years/50K hours
- Product/Driver: 3 years

Listing

- cETLus Wet Location
- ENERGY STAR
- California Title 24

SPECIFICATION

Input Voltage	120-277VAC			
Wattage (+/-5%)	14W	23W	30W	45W
Lumen (+/-5%)	935	1,700	2,195	3,370
Efficacy (LPW)	66.8	73.9	73.2	74.9
Beam Angle	63.2°	66.5°	66.6°	63.3°
CRI (Typical)	80, 90			
CCT (Color +/-5%)	2700K, 3000K, 3500K, 4000K			
Dimming	0-10V, ELV & TRIAC Optional Lutron Drivers			
LED Module	5 yr/50K hr			
Environment	Wet Location			

Triac Approved Dimmers

- * Lutron: NovaT (Ntely 300 & 600)
Divia (Dvelv-300P & 303P)
- * Leviton: Acenti: Ate06-1Lw
- * Leviton Trimatron #705W (incandescent)

0-10V Approved Dimmers

- * Lutron: Nova® 0-10V : NTFTV
Divia® 0-10V : DVTV
- * Leviton: Decora 0-10V : IP710DL

Consult tech. service or factory
for additional dimmers

* Provided: Easy-quick connector case
(patent pending)



9" LED Commercial Flat Frame-in Kit

HOUSING COMPATIBILITY for the LEDH-CFK9 RETROKIT ONLY

LEDH-CFK9 ETL Listed for installation in the following Lumtech standard architectural housings;

- 9" : FH-VC9, FH-VA9, FH-VAR9, FH-HA9, FH-HAR9, FH-HC9, IH-VF9300, IH-VA9300, IH-VAR9300, IH-HF9300, IH-HA9300, IH-HAR9300, MH-VF9, MH-VA9, MH-VAR9, MH-(HF9, HA9, HAR9)

TRIM

* Wide beam reflector is standard. Also available narrow beam in reflector(consult with factory).



LEDT-R94

Specular Open Reflector

LEDT-R914

Baffle w / Reflector

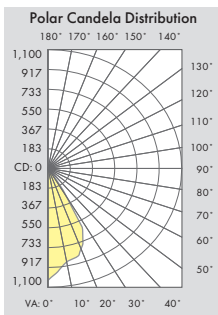
LEDT-R941

Baffled Lens w / Reflector

* All trims are rated for damp location and regressed lens trims are wet location listed.

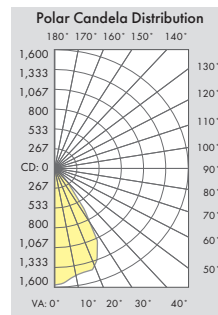
PHOTOMETRIC REPORT

* Contact Factory for IES File



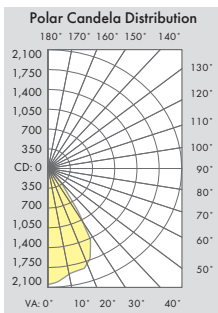
Illuminance at a Distance	
Center Beam FC	Beam Width
2.0ft	257.3 fc
4.0ft	64.3 fc
6.0ft	28.6 fc
8.0ft	16.1 fc
10.0ft	10.3 fc
12.0ft	7.1 fc
Beam Spread: 63.2°	

[LEDH-CFK9-14-830+LEDT-R94]



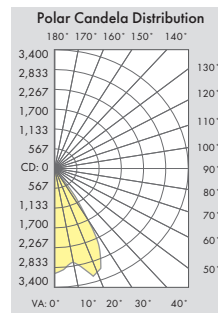
Illuminance at a Distance	
Center Beam FC	Beam Width
2.0ft	394.6 fc
4.0ft	98.6 fc
6.0ft	43.8 fc
8.0ft	24.7 fc
10.0ft	15.8 fc
12.0ft	11.0 fc
Beam Spread: 66.5°	

[LEDH-CFK9-23-830+LEDT-R94]



Illuminance at a Distance	
Center Beam FC	Beam Width
2.0ft	511.0 fc
4.0ft	127.7 fc
6.0ft	56.8 fc
8.0ft	31.9 fc
10.0ft	20.4 fc
12.0ft	14.2 fc
Beam Spread: 66.6°	

[LEDH-CFK9-30-830+LEDT-R94]



Illuminance at a Distance	
Center Beam FC	Beam Width
2.0ft	747.9 fc
4.0ft	187.0 fc
6.0ft	83.1 fc
8.0ft	46.7 fc
10.0ft	29.9 fc
12.0ft	20.8 fc
Beam Spread: 63.3°	

[LEDH-CFK9-45-830+LEDT-R94]

Ordering Information

Model	-Watts	-CRI	Color Temp.**	Driver*	Trim	-Reflector Finish**	Baffle Finish for LEDT-R914 & R941	Optional Metal Trim Ring Finish
LEDH-CFK9 = 9", Non-IC, Commercial Flat Frame-in Down Light Kit	-14 = 14W -23 = 23W -30 = 30W -45 = 45W	-8 = 80 -9 = 90	27 = 2700K 30 = 3000K 35 = 3500K 40 = 4000K	UTD = 120~277VAC, Triac: 10-100% Dimming (14, 23 & 30W only) UZTD = 120~277V, 0-10V, Triac & ELV: 1-100% Dimming L1D = Lutron Hi-Lume 1% Dimming L5D = Lutron EcoSystem 5% Dimming *- Option -EM = Emergency battery backup	LEDT-R94 LEDT-R914 LEDT-R941	-HC = Haze Clear -WH = White Painted	-WH = White -BK = Black	-WH = White Plastic Trim Ring (Standard) -WMR = White Metal Ring -SN = Satin Nickel -CH = Chrome -SF = Polished Self-Flange (for Open or Wall Wash Reflectors ONLY)

Example : LEDH-CFK9-23-830UTD

LEDT-R94-HC-WH

** Consult factory for other Color Temperatures and Finishes