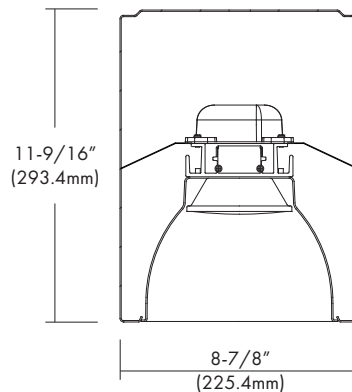


# LEDH-SR8-G2 Series

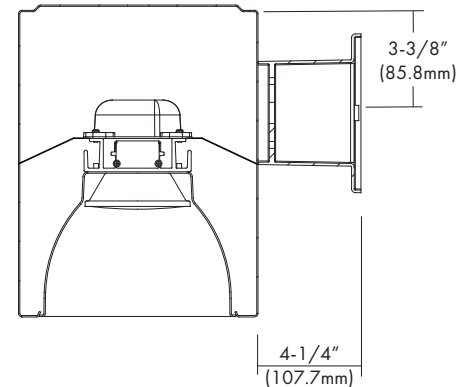
120-277 VAC, 8" LED Ceiling, Wall and Pendant Mount Cylinders

Catalog #		Type
Project		Date
Prepared by		

## 8" LED Cylinder



[Ceiling Mount : LEDH-SR8C]



[Wall Mount : LEDH-SR8W]

## DESCRIPTION

The LEDH-SR8-G2 Series 8" Surface Mount Cylinders come in three versions: Ceiling "C", Wall "W" and Pendant "P". The fixtures are offered in 10W, 14W, 22W, 30W and 44W LED, COB modules plus State-of-the-Art universal drivers with Triac, ELV or 0-10V dimming.

## DESIGN FEATURES

### LED Module

- Durable extruded aluminum heat sink is integrated with the LED COB (chip on board).
- Inner reflector enables even distribution with excellent uniformity.

### Reflector

- Anodized haze clear and White painted finishes. Optional Baffle style reflectors are also available. Contact factory for other finishes.

### Housing

- Round, .060" thick spun aluminum housing available in semi-matte White, Black, Bronze and Silver.

### Heat Sink

- Extruded Aluminum Heat Sink computer designed for superior thermal management to ensure constant light output, color and life of solid state engine components.

### LED Power Supply Driver

- Universal, 120~277 VAC input, high efficiency dimming drivers with ① Triac/ELV dimmer switches or ② Triac/ELV/0-10V dimmer switches.
- Drivers feature power factor >.90, THD <20% with integral thermal protection to sense over temperature or electrical issues.
- Driver mounts externally to the LED module for thermal isolation and allows for easy maintenance if needed.
- Optional Lutron Hi-lume 1%, LED drivers are available. Lutron drivers provide flicker-free, smooth, continuous dimming down to 1%. (Contact factory for dimming system requirements)

### Wall Bracket (LEDH-SR8W)

- Cast aluminum bracket easily secures to housing's cross-bar with set screws.

### Limited Warranty

- LED Module & Product: 3 years

### Listing

- cCSA-us Listed

SPECIFICATION					
Input Voltage	120-277VAC				
Wattage (+/-5%)	10W	14W	22W	30W	44W
Lumen (+/-5%)	1,000	1,400	2,200	3,000	4,400
Efficacy (LPW)	100	100	100	100	100
Beam Angle	67.7°	75°	75.5°	77°	77°
CRI (Typical)	80, 90				
CCT (Color +/-5%)	2700K, 3000K, 3500K, 4000K				
Dimming	Triac/ELV/0-10V/LUTRON/DALI				
LED Module	5 yr/50K hr				
Environment	Indoor				

### \* Triac/ELV/0-10V Approved Dimmers

#### \* Lutron:

Triac: Skylark S-600  
 ELV: NovaT NTELV-300 & 600  
 Diva DVELV-300P & 303P  
 Maestro MAELV-600  
 Skylark SEL-VB-300P  
 0-10V: Diva DDTV  
 Diva DVSTV-IV  
 CFL/LED: Diva DVCL-253P  
 Ariadni AYCL-253P

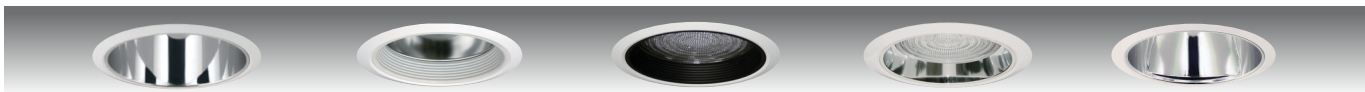
#### \* Leviton:

Triac: Trimatron #705W  
 ELV: IPE04-1L (ELV)  
 Acenti: ATE06-1LW

\* Consult tech. service or factory for additional dimmers

## TRIMS

\* Wide beam reflector is standard. Also available in narrow beam in reflector (consult with factory).



**LEDT-R84**  
Specular Open Reflector

**LEDT-R814**  
Baffle w / Reflector

**LEDT-R841**  
Baffle w /  
Regressed Lens

**LEDT-R822**  
Reflector w /  
Regressed Lens

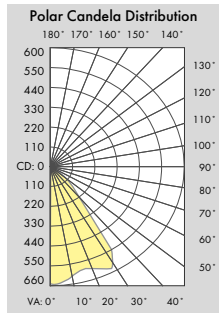
**LEDT-R836**  
Wall Wash w /  
Reflector Plate

\* All trims are rated for damp location and regressed lens trims are wet location listed.

\* LEDT-R841 & LEDT-R822 are suitable and rated for shower location.

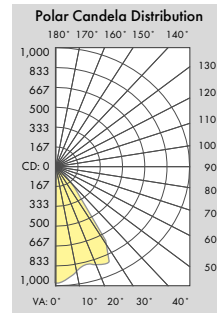
## PHOTOMETRIC REPORT

\* Contact Factory for IES File



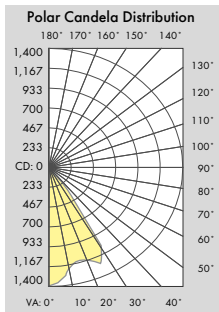
Illuminance at a Distance	
Center Beam FC	Beam Width
2.0ft	163.9 fc
4.0ft	41.0 fc
6.0ft	18.2 fc
8.0ft	10.2 fc
10.0ft	6.6 fc
12.0ft	4.6 fc
Beam Spread: 63°	

[LEDH-SR8C/SR8W/SR8P-14]



Illuminance at a Distance	
Center Beam FC	Beam Width
2.0ft	248.0 fc
4.0ft	62.0 fc
6.0ft	27.6 fc
8.0ft	15.5 fc
10.0ft	9.9 fc
12.0ft	6.9 fc
Beam Spread: 63°	

[LEDH-SR8C/SR8W/SR8P-23]



Illuminance at a Distance	
Center Beam FC	Beam Width
2.0ft	348.8 fc
4.0ft	87.2 fc
6.0ft	38.8 fc
8.0ft	21.8 fc
10.0ft	14.0 fc
12.0ft	9.7 fc
Beam Spread: 63°	

[LEDH-SR8C/SR8W/SR8P-30]

## Ordering Information

Model	Pendant Style/Length	-Watts	-CRI	Color Temp. *	Driver	-Housing Finish *	Trim	- Reflector Finish **	Baffle Finish for LEDT-R814 & R841	Reflector Collar for LEDT-R822	Lens for LEDT-R841 & R822
<b>LEDH-SR8C-G2</b> (Ceiling Mount)	Place Style <u>before</u> Length - = Standard Pendant -S = Swivel Mount Pendant	-10 = 10W (UZTD & UTMD Driver Only)	-8 = 80 CRI -9 = 90 CRI	27 = 2700K 30 = 3000K	UTD = 120-277VAC, Triac/ELV Dimming (14, 22 & 30W Only) UZTD = 120-277VAC, 0-10V Dimming (10, 14, 22, 30 & 44W) UTMD = 120-277VAC, Tri-Mode (0-10V/ Triac/ELV) Dimming (10, 14, 22, & 44W Only) LDE1 = OLUTRON Hi-Lume 1% EcoSystem FadeToBlack LTE = OLUTRON Hi-Lume 1% 2-Wire Dimming PEQ01 = OLUTRON Hi-Lume Premier 0.1% EcoSystem FadeToBlack (For 23W or less only) UDALI = Universal DALI Dimming to 1% *- Option -EM = Emergency battery backup	-WH = White -BK = Black -BZ = Bronze -SI = Silver	<b>LEDT-R84</b> <b>LEDT-R814</b> <b>LEDT-R841</b> <b>LEDT-R822</b> <b>LEDT-R836</b>	-HC = Haze Clear -WH = White Painted -BK = Black	-WH = White -BK = Black	-CL = Clear	-FR = Fresnel
<b>LEDH-SR8W-G2</b> (Wall Mount)	Pendant Lengths 12 = 12 Inches 18 = 18 Inches 24 = 24 Inches	-14 = 14W		35 = 3500K 40 = 4000K							
<b>LEDH-SR8P-G2</b> (Pendant Mount)	36 = 36 Inches 48 = 48 Inches Cable and Cord Lengths -C32 = 32 Inches -C58 = 58 Inches -C108 = 108 Inches -C128 = 128 Inches	-22 = 22W -30 = 30W -44 = 44W									

Example : LEDH-SR8P-G2-S18-22-830UZTD-WH

LEDT-R84-HC

\* Consult factory for other Color Temperatures and Finishes