

| | |
|-------------------|--|
| Project: | |
| Type: | |
| Catalog #: | |

STANDARD

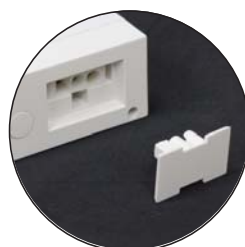


APPLICATIONS

Allows for easy replacement of existing fluorescent, incandescent, halogen and xenon under cabinet lighting. Built-in driver, captive screws and knockouts for easy installation in new work or remodel applications.

FEATURES

- Built-in integral electronic driver
- Dimmable 120V
- On / Off rocker switch
- ≥80 or ≥90 CRI
- Available in 9 different lengths
- Rear panel punch-in electrical connectors for easy wiring
- 2700K available
- 50,000 hour life expectancy
- Finish: white
- Linkable up to 400W



Link several undercabinets together with the Linkable Connector Wire



Pre-positioned installation screws

Under Cabinet Included Accessories



Under Cabinet Available Accessories



| MODEL | DESCRIPTION | INPUT VOLTAGE | CRI | WATTS | LUMENS | COLOR |
|---------|--------------------------------|---------------|------|-------|--------|-----------|
| LEDUC8 | Undercabinet Light - 8" x 3½" | 120V | > 90 | 4W | 210 | WH White |
| LEDUC11 | Undercabinet Light - 11" x 3½" | 120V | > 90 | 6W | 470 | BZ Bronze |
| LEDUC14 | Undercabinet Light - 14" x 3½" | 120V | > 90 | 9W | 510 | |
| LEDUC18 | Undercabinet Light - 18" x 3½" | 120V | > 90 | 11W | 690 | |
| LEDUC22 | Undercabinet Light - 22" x 3½" | 120V | > 90 | 11W | 750 | |
| LEDUC29 | Undercabinet Light - 29" x 3½" | 120V | > 90 | 13W | 950 | |
| LEDUC32 | Undercabinet Light - 32" x 3½" | 120V | > 90 | 15W | 1100 | |
| LEDUC36 | Undercabinet Light - 36" x 3½" | 120V | > 90 | 16W | 1130 | |
| LEDUC48 | Undercabinet Light - 48" x 3½" | 120V | > 90 | 18W | 1430 | |