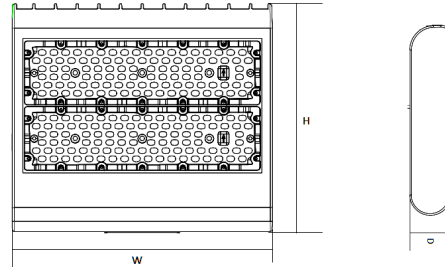




DIMENSIONS:

11"(H) x 12-5/8"(W) x 3-3/8"(D)



LF3-HL-100W-50K-480V
LF3-HL-100W-40K-480V

LED HIGH LUMEN LF3 FLOOD LIGHTS

Ideal for general site lighting, alleys, loading docks, doorway, pathway, and parking areas.

ELECTRICAL SPECIFICATIONS:

- Voltage: 480V
- Wattage: 100W
- Efficacy: 130LM/W
- Power factor: >0.90
- THD: <20%

HOUSING SPECIFICATIONS:

- Die-cast Aluminum housing with powder coat finish (Dark Bronze)
- Operating temperature: -40°F to 104°F
- Lifespan: 70,000 hr.
- IP Rating: IP65
- Effective projected areas (EPA's) are:
 Front = 0.38 square feet
 Side = 0.30 square feet
 Face = 1.05 square feet

CERTIFICATIONS:UL, DLC



LIGHTING SPECIFICATIONS:

- Dimmable: 0~10V Dimming
- Lens: TYPE III TIR optic Lens
- LED: Philips Lumileds Luxeon 3030 High flux LED
- Solid state lighting technology for long life, no maintenance needed and high-efficiency
- Cord type: 6' SJTW 18/3 AWG cable
- Total lumens: 13200LM/13000LM
- Color temperature: 5000K/4000K
- Color rendering index: 82~84
- Beam Angle: 120°x90°

WARRANTY: 7 years

| MODEL | WATTS | VOLTAGE | LUMENS | COLOR TEMP |
|-----------------|-------|---------|---------|------------|
| LF3-HL-100W-50K | 100W | 480V | 13200LM | 5000K |
| LF3-HL-100W-40K | 100W | 480V | 13200LM | 4000K |



LF3-HL-100W-50K-480V LF3-HL-100W-40K-480V

LED HIGH LUMEN LF3 FLOOD LIGHTS

| MODEL | WATTS | VOLTAGE | LUMENS | COLOR TEMP |
|-----------------|-------|---------|---------|------------|
| LF3-HL-100W-50K | 100W | 480V | 13200LM | 5000K |
| LF3-HL-100W-40K | 100W | 480V | 13200LM | 4000K |

MOUNTING OPTIONS:



LF3-HL-SF
(Slip fitter)

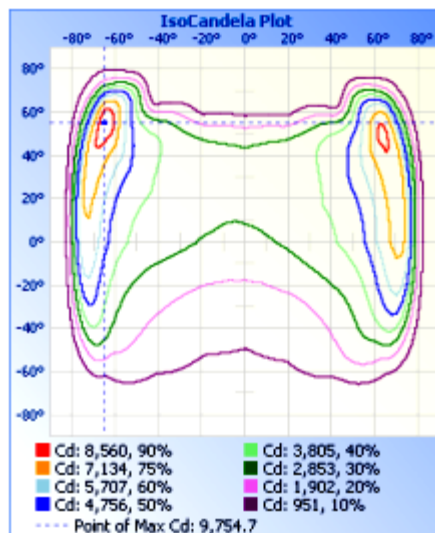
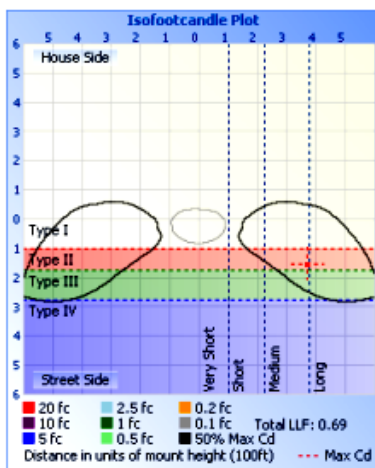
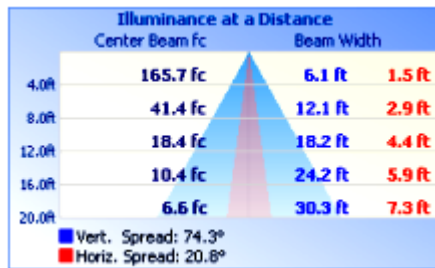
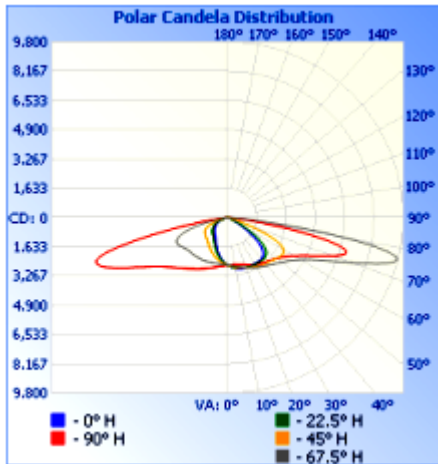


LF3-HL-YK
(Yoke)



LF3-HL-EXTARM
(Straight Arm)

PHOTOMETRIC CHARTS:



LF3-HL-100W-50K-480V
LF3-HL-100W-40K-480V

LED HIGH LUMEN LF3 FLOOD LIGHTS

LENS TYPE OPTIONS:

| MODEL | LENS TYPE | BEAM ANGLE | LENS PANELS PER |
|---------------------|-----------|------------|-----------------|
| LF3-HL-TYPEII-100W | TYPEII | 120°X90° | 2 |
| LF3-HL-TYPEIII-100W | TYPEIII | 140°X80° | 2 |
| LF3-HL-TYPEIV-100W | TYPEIV | 140°X100° | 2 |

| MODEL | WATTS | VOLTAGE | LUMENS | COLOR TEMP |
|-----------------|-------|---------|---------|------------|
| LF3-HL-100W-50K | 100W | 480V | 13200LM | 5000K |
| LF3-HL-100W-40K | 100W | 480V | 13200LM | 4000K |

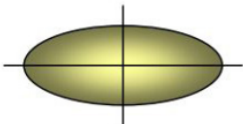
LENS TYPE SPECIFICATIONS:

- Optical PC Precision lenses designed for Westgate LF3 Series Flood Lights
- these lenses are replaceable by the factory or field replaced by installers

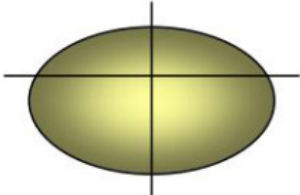
LENS TYPES EXPLAINED

SELECTING THE BEST DISTRIBUTION TYPE FOR YOUR OUTDOOR PROJECT

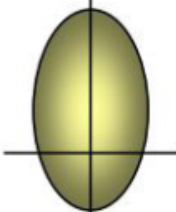
“Distribution Type” defines how far forward of the luminaire (i.e., on the StreetSide) the effective output reaches.



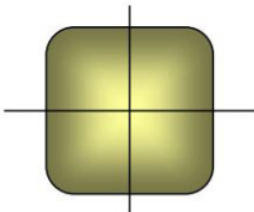
Type 2 is still linear but wider in the front to accommodate 4 lane roadways, or wider drive lanes.



Type 3 (commonly known as a “Bat-Wing”) is suitable for perimeters, often where other interior pole placements fill the site



Type 4 (commonly known as a “Forward Throw” or Asymmetric) is best along perimeters where spill light is a concern or there are no place to add poles within a site.



Type 5 – is available in a round or square pattern. Best suited for interior areas within a site or on the median of 4-6 lane roadways.

