

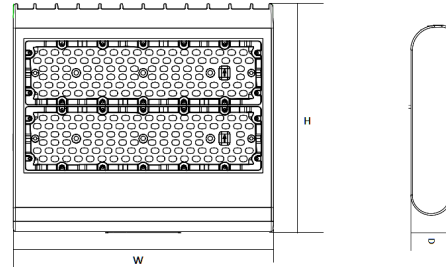
JOB NAME: \_\_\_\_\_

DATE: \_\_\_\_\_

TYPE: \_\_\_\_\_

**DIMENSIONS:**

14-1/8"(H) x 12-5/8"(W) x 3-3/8"(D)



**LF3-HL-150W-50K-480W**  
**LF3-HL-150W-30K-480W**

**LED HIGH LUMEN LF3 FLOOD LIGHTS**

Ideal for general site lighting, alleys, loading docks, doorway, pathway, and parking areas.

**ELECTRICAL SPECIFICATIONS:**

- Voltage: 480V
- Wattage: 150W
- Efficacy: 131LM/W ~ 137LM/W
- Power factor: >0.90
- THD: <20%

**HOUSING SPECIFICATIONS:**

- Die-cast Aluminum housing with powder coat finish (Dark Bronze)
- Operating temperature: -40°F to 104°F
- Lifespan: 70,000 hr.
- IP Rating: IP65
- Effective projected areas (EPA's) are:  
 Front = 0.38 square feet  
 Side = 0.30 square feet  
 Face = 1.05 square feet

**CERTIFICATIONS:UL, DLC**



**LIGHTING SPECIFICATIONS:**

- Dimmable: 0~10V Dimming
- Lens: TYPE III TIR optic Lens
- LED: Philips Lumileds Luxeon 3030 High flux LED
- Solid state lighting technology for long life, no maintenance needed and high-efficiency
- Cord type: 6' SJTW 18/3 AWG cable
- Total lumens: 20680LM/19700LM
- Color temperature: 5000K/3000K
- Color rendering index: 82~84
- Beam Angle: 120°x90°

**WARRANTY: 7 years**

MODEL	WATTS	VOLTAGE	LUMENS	COLOR TEMP
LF3-HL-150W-50K-480W	150W	480V	20680LM	5000K
LF3-HL-150W-30K-480W	150W	480V	19700LM	3000K



### LF3-HL-150W-50K-480V LF3-HL-150W-30K-480V

### LED HIGH LUMEN LF3 FLOOD LIGHTS

#### MOUNTING OPTIONS:



LF3-HL-SF  
(Slip fitter)



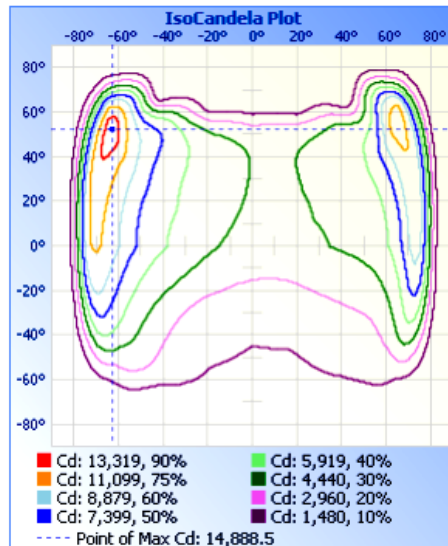
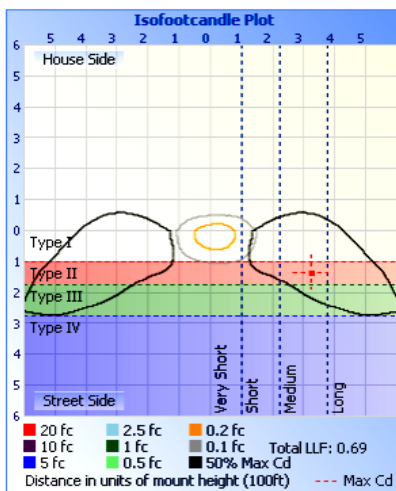
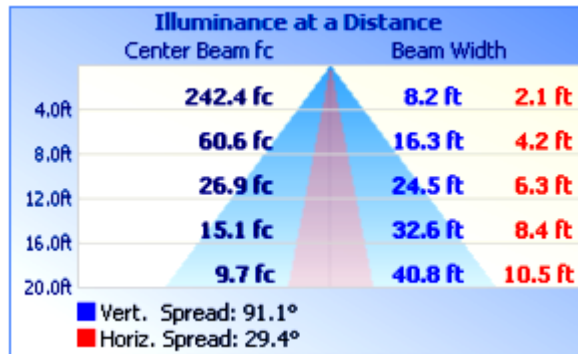
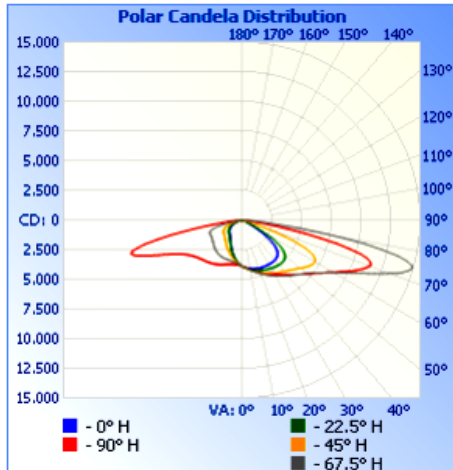
LF3-HL-YK  
(Yoke)



LF3-HL-EXTARM  
(Straight Arm)

MODEL	WATTS	VOLTAGE	LUMENS	COLOR TEMP
LF3-HL-150W-50K-480W	150W	480V	20680LM	5000K
LF3-HL-150W-30K-480W	150W	480V	19700LM	3000K

#### PHOTOMETRIC CHARTS:



**LF3-HL-150W-50K-480V**  
**LF3-HL-150W-30K-480V**

**LED HIGH LUMEN LF3 FLOOD LIGHTS**

**LENS TYPE OPTIONS:**

MODEL	LENS TYPE	BEAM ANGLE	LENS PANELS PER FIXTURE
LF3-HL-TYPEII-150W/230W/300W	TYPEII	120°X90°	4
LF3-HL-TYPEIII-150W/230W/300W	TYPEIII	140°X80°	4
LF3-HL-TYPEIV-150W/230W/300W	TYPEIV	140°X100°	4

MODEL	WATTS	VOLTAGE	LUMENS	COLOR TEMP
LF3-HL-150W-50K-480W	150W	480V	20680LM	5000K
LF3-HL-150W-30K-480W	150W	480V	19700LM	3000K

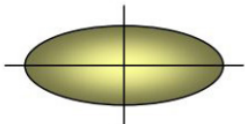
**LENS TYPE SPECIFICATIONS:**

- Optical PC Precision lenses designed for Westgate LF3 Series Flood Lights
- these lenses are replaceable by the factory or field replaced by installers

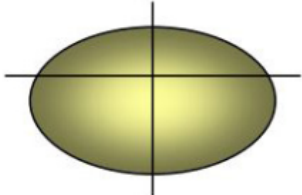
# LENS TYPES EXPLAINED

## SELECTING THE BEST DISTRIBUTION TYPE FOR YOUR OUTDOOR PROJECT

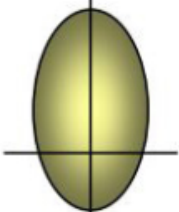
“Distribution Type” defines how far forward of the luminaire (i.e., on the StreetSide) the effective output reaches.



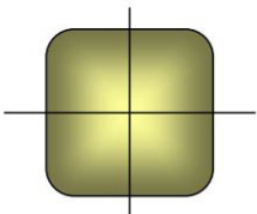
Type 2 is still linear but wider in the front to accommodate 4 lane roadways, or wider drive lanes.



Type 3 (commonly known as a “Bat-Wing”) is suitable for perimeters, often where other interior pole placements fill the site



Type 4 (commonly known as a “Forward Throw” or Asymmetric) is best along perimeters where spill light is a concern or there are no place to add poles within a site.



Type 5 – is available in a round or square pattern. Best suited for interior areas within a site or on the median of 4-6 lane roadways.

Rev. 2018-10-18

