

**4" Round Original Super Thin Recessed LED 9W**



**Type IC, Wet & Air-Tight**

DESCRIPTION

4" Round Recessed LED With Integral Driver In Connection Box  
Fits Where No Other Recessed Fixture Can

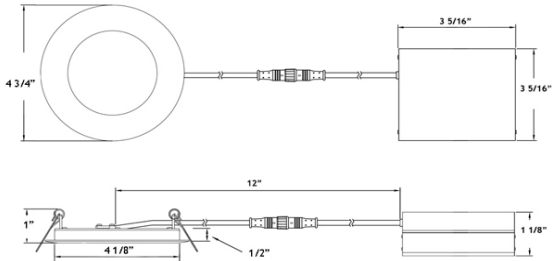
FEATURES & BENEFITS

- 1/2" Deep - Install Directly Under Joists - Maximum Layout Flexibility
- Driver Inside Connection Box - No Junction Box Needed
- Fast & Easy To Install - Save On Labor
- Type IC Rated - No Housing Required

MOUNTING

Cut Hole In Ceiling And Snap Fixture In Opening With Attached Spring Clips. Ceiling Clearance Required For Driver: 2 1/2"

**DIMENSIONS:** ID 4 1/8" OD 4 3/4" Cut Out 4 1/8" to 4 1/4"



120V TRIAC Dimmable

Optional 120V - 347V

Driver Included

Driver 0-10V Dimmable



Order Separately as  
Cat # **LLL-LD1535T**

AVAILABLE TRIMS



ORDERING GUIDE Example: **LY4RCS / 30K / WH**

	CCT	Trim Finish	
<b>LY4RCS</b>	/	/	
3000K	<b>30K</b>	<b>WH</b>	White
4100K	<b>41K</b>	<b>BK</b>	Black
		<b>BN</b>	Brushed Nickel

Project: \_\_\_\_\_

Location: \_\_\_\_\_

Cat #: \_\_\_\_\_ Qty: \_\_\_\_\_

Notes: \_\_\_\_\_

SPECIFICATION

Applications	Recessed Ceiling, Showers & Soffits	
Energy Used	9 W	
Colour Temperature	3000	4100
Light Output	550	600
Halogen Equivalent	50 W	
Beam Angle	110°	
CRI	80	
Default Driver Input	120V AC	Triac Dimmable
Optional Driver Input	120V-347V AC	0-10V Dimmable
Junction Box Wire Capacity	Max 5 No 12 AWG or 8 No 14 AWG	
Power Factor	0.98	
Approved Location	Insulated Ceilings, Open Plenum, Wet	
IP Rating	IP 54	
Air Tight	Yes	
Ambient Temperature	-40°F (-40°C) to +104°F (+40°C)	
Projected Life	70% Light Output at 50,000 Hours	
Certification	cULus, Energy Star	
Warranty	10 Year Residential / 5 Year Commercial	

ACCESSORIES

Sold Separately



Low Voltage Extension Cables  
6ft - cat # **EXC6**, 20ft - cat # **EXC20**  
Max 40 ft Allowed. FT4 / CMR rated



26" Flat Rough-In Plates - cat # **RIP4**



13" Flat Rough-In Plate - cat # **MP4-2**



Flanged Plate with Hanger Bars - cat # **FRP4**



Goof Ring OD 5 3/4"  
White cat # **GR4** Black cat # **GR4-BK**

COMPLIANCE



**Type IC  
Air-Tight**