

**LED T8 Lamp Ready Retrofit Strip
(2 Pack)**
RS SERIES



Jamp Listed



PRODUCT DESCRIPTION:

The MaxLite Lamp Ready Retrofit Strip provides a UL listed retrofit kit for industrial linear fixtures that is engineered to operate the latest single ended LED T8 lamps supplied separately. Able to be used to retrofit 4' linear fixtures or with a tandem bracket for 8' linear fixture, these retrofit kits come pre-wired for single ended operating LED lamps for contractor ready installation. These retrofit kits are packaged in 2 packs with a tandem bracket included for ease of installation.

Single ended or Dual mode (Single/Double ended) T8 internal driver lamps (4') under 17W must be purchased separately from Maxlite for this product.

Refer to Maxlite website for the latest offering.

<https://www.maxlite.com/products/ul-type-b-ballast-bypass-t8/>

<https://www.maxlite.com/products/ul-type-b-ballast-bypass-double-ended-power-t8/>

FEATURES:

- Sockets are wired in series via non-shunted sockets
- Retrofits into preexisting linear fixtures
- Tandem bracket can be used to turn two 4' sections into 8' retrofit
- Product packaged as 2 pack of 4ft strips for easier 8ft retrofit
- 5 year limited warranty

CONSTRUCTION:

- Engineered and UL rated to take up to 22w per set of lamp holders
- Wiring is 18 AWG solid to allow 120-277v operation where lamp specification allows
- Sockets rated to 660w , 600V, UL Listed

WARRANTY:

5-year standard warranty*

(see terms at www.maxlite.com/warranties)

*Excludes EM/MS versions; component warranty applies.

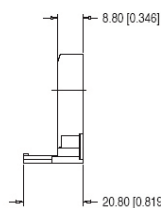
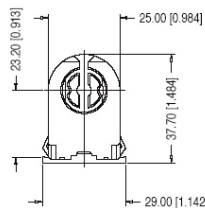
*Product may be eligible for warranty extension to 10 years for an additional fee. Limitations apply, contact MaxLite for details.

ORDERING INFORMATION

ORDER NUMBER	MODEL	WATTS (NOMINAL)	DESCRIPTION
107768	RS-482XT8	44W	RETROFIT STRIP 48" 2 LAMP T8 LED 120-277V



G13LPNS



NOTES:

1. This product is specifically engineered and listed for use with MaxLite Single Ended conductor LED lamps. Maximum lamp wattages cannot exceed stated levels without voiding warranty. Cannot use with any other brand of lamps.

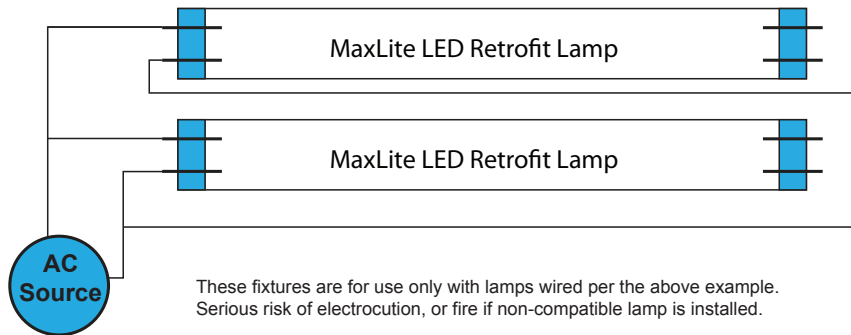
SPECIFICATIONS:

RS-482XT8

ITEM	SPECIFICATION	DETAILS
ELECTRICAL	Input Voltage	Max 22W Per Lamp
	Power Consumption	Per Lamp Spec
PHYSICAL	Dimension	6.5" x 48"
	Housing	Steel
	Operating Temperature	Per Lamp Spec
CERTIFICATION	Certification	UL for single ended LED lamps*
	Material Usage	RoHS compliant; no mercury
	Environment	Indoor / Damp
	Warranty	5 years

* See reference diagram adjacent. Must be

IMPORTANT WARNING:



These fixtures are for use only with lamps wired per the above example. Serious risk of electrocution, or fire if non-compatible lamp is installed.