

Project Name:

Part Number:

Type:

# QWIKLINK

## Linear Strip



407-478-3759  
www.ilp-inc.com

Product Overview



SCAN ME  
or Click Here



### FEATURES

- Versatile specification grade linear strip solution
- Steel housing with white powdercoat finish
- 2ft & 4ft lengths available
- High transmission PMMA frosted acrylic lens
- Ceiling, wall, pendant or suspension mounting options
- QWIKLINK connector allows for easy and seamless connection up to 64 linear feet
- Factory set or field selectable lumen output (1,200 lm to 5,200 lm)
- Factory set or field selectable CCT (3000K - 3500K - 4000K)
- High Efficacy—Up to 130 lm/W
- 10% Uplight std.
- >80 Color Rendering Index (CRI)
- Calculated L70 >100,000 hrs
- 0-10V Dimmable Driver (100%-10%)
- 120-277V Universal Voltage
- 5 Year Warranty
- ETL Listed for Damp & Dry Location
- DesignLights Consortium Premium Qualified Luminaire (for Stairwell and Passageway Luminaires only)



### SUITABLE APPLICATIONS

- Education
- Commercial Office
- Retail
- Residential
- Stairwell & Passageway with Sensor
- Healthcare
- Storage Facility
- Grocery Store
- Industrial

### ORDERING GUIDE:

SERIES	LUMENS (Select One)	DRIVER	CCT (Select One)
QL2 2ft QWIKLINK Strip	12/20/25L - Lumen Selectable <sup>9</sup> 12L 20L 25L	U 120-277V	CCTS - 30/35/40 - CCT Selectable <sup>10</sup> 40 35 30
QL4 4ft QWIKLINK Strip	18/22/30L - Lumen Selectable <sup>9</sup> 18L 22L 30L		
QL4 4ft QWIKLINK Strip	25/39/50L - Lumen Selectable <sup>9</sup> 25L 39L 50L		

OPTIONS		CONTROLS OPTIONS	
Factory Installed		Basic	
EM10 <sup>1</sup>	10W Battery Backup	QL/S <sup>7</sup>	Tri-Level Dimming & Photocell Microwave Sensor
EM5 <sup>2</sup>	5W Battery Backup		
CORDx	Cord (x=ft)		
CORD/xFT/5WIRE	Cord (x=ft) 5 wire with 3 leads attached to power and 2 leads attached to dimming		
CORD/xFT/6WIRE	Cord (x=ft) 6 wire with 3 leads to power, 1 lead to battery backup, and 2 leads to dimming		
CORD/xFT/L7-15P	Cord (x=ft) with 277V 15amp Plug		
Ship With Accessories			
QLC/20	7.9" QWIKLINK Cable		
QLC/150	5ft QWIKLINK Cable		
ALBR/QL <sup>4</sup>	Alignment Bracket		
HUB 3/4 <sup>5</sup>	3/4" Conduit HUB		
FMB/QL <sup>6</sup>	Fixture Mounting Box		
HB-XX-18Y-PAD	Y-Toggle Cable System (xx=in)		
JBC	J-Box Plate Cover		
QL2 WC	Wire Cage Kit for QL2 Fixtures		
QL4 WC	Wire Cage Kit for QL4 Fixtures		
QLCON <sup>8</sup>	QWIKLINK Connector		
S/RC	Sensor Programming Remote		

<sup>1</sup>Available on QL4 only

<sup>2</sup>Available on QL2 only

<sup>3</sup>Available for 120V Applications only and not available with EM

<sup>4</sup>Utilized to align fixtures mounted in continuous rows

<sup>5</sup>Utilized for center or dual pendant mount. Must be used w/ FMB for Single Pendant Mount.

<sup>6</sup>Must be used with HUB 3/4

<sup>7</sup>Field installed sensor. See pg 3 for details

<sup>8</sup>(1) included w/ every fixture

<sup>9</sup>Lumens are set to max output from the factory

<sup>10</sup>CCT is set to 3500K from the factory

# QWIKLINK

## Linear Strip



### QUICK SHIP ITEMS:

SERIES	LUMENS	DRIVER	CCT
QL2 2ft QWIKLINK Strip	12/20/25L - Lumen Selectable	U 120-277V	CCTS - 30/35/40 - CCT Selectable
QL4 4ft QWIKLINK Strip	18/22/30L - Lumen Selectable		
QL4 4ft QWIKLINK Strip	25/39/50L - Lumen Selectable		

LED SYSTEMS INFO <sup>1</sup>	3000K		3500K		4000K		Watts <sup>2</sup>	CRI	Ambient Temp. Range	DLC Listing	Replaces
	Part Numbers	Lumens	Efficacy	Lumens	Efficacy	Lumens					
QL2-12L-U-CCTS	1,277 lm	142 lm/W	1,332 lm	148 lm/W	1,291 lm	144 lm/W	9 W	>80	-4°F - 131°F	Premium	1T8
QL2-20L-U-CCTS	2,041 lm	138 lm/W	2,128 lm	144 lm/W	2,064 lm	139 lm/W	15 W				2T8
QL2-25L-U-CCTS	2,518 lm	136 lm/W	2,626 lm	145 lm/W	2,546 lm	136 lm/W	19 W				2T8
QL4-18L-U-CCTS	1,800 lm	139 lm/W	2,013 lm	150 lm/W	1,952 lm	145 lm/W	13 W	>80	-4°F - 131°F	Premium	1T8
QL4-22L-U-CCTS	2,323 lm	144 lm/W	2,423 lm	150 lm/W	2,349 lm	146 lm/W	16 W				2T8
QL4-25L-U-CCTS	3,345 lm	142 lm/W	3,489 lm	148 lm/W	3,383 lm	143 lm/W	24 W				2T8
QL4-30L-U-CCTS	3,053 lm	145 lm/W	3,184 lm	151 lm/W	3,087 lm	147 lm/W	21 W				2T8
QL4-39L-U-CCTS	4,087 lm	139 lm/W	4,263 lm	144 lm/W	4,133 lm	140 lm/W	29 W				2T8
QL4-50L-U-CCTS	5,171 lm	138 lm/W	5,393 lm	143 lm/W	5,211 lm	138 lm/W	38 W				2T5

<sup>1</sup>LED Chips are frequently updated therefore values are nominal  
<sup>2</sup>Electrical data at 25C (77F). Actual wattage may differ by +/-10%.

## SPECIFICATIONS

### CONSTRUCTION

Steel housing with white powdercoat finish body for rigidity, durability and ease of installation. Injection molded end caps provide sleek and robust design. Fixture construction allows for standard 10% uplight. Designed to achieve maximum performance and improved aesthetics.

### ELECTRICAL

Class 2 LED light engine for high efficacy and long life. Calculated L70 > 100,000hrs. Power Factor > 0.90. Standard 120-277 Vac 0-10V dimmable (10% - 100%).

### INSTALLATION

Designed for a variety of mounting solutions including ceiling, wall, pendant and suspended. By utilizing the included QWIKLINK connector the fixture can be mounted in continuous rows providing easy and seamless connection up to 64 linear feet. QWIKLINK connection cables are available in various lengths for angled and distant fixture connections. Factory installed cord options. See page 3 for additional detail. Knockouts mounted on back and side of fixture for electrical access and mounting.

### WARRANTY

5 Year Warranty (Terms and Conditions apply)

### OPTICS

High transmission extruded PMMA frosted acrylic lens for durability and LED glare reduction. Toolless field removeable lens section for easy access to driver channel for installation and maintenance.

### CONTROLS

Field installed QWIKLINK sensor integrates with single or multiple fixtures for occupancy and photocell controls. Utilizing the included QWIKLINK connector allows the sensor to be installed within seconds with no additional wiring required in the field. The sensor mounts on the end of the fixture and can be placed in the middle of a 64ft run to provide optimal motion sensing and energy savings. See page 3 for additional detail.

### CERTIFICATIONS

ETL Listed to US and Canadian safety standards. Suitable for damp locations. Title 24 Compliant with sensor option; see local ordinance for qualification information. DLC (DesignLights Consortium) Premium Qualified. Please refer to the DLC Qualified Products List at [www.Designlights.org/QPL](http://www.Designlights.org/QPL) to confirm specific product qualifications.

# QWIKLINK

## Linear Strip

### QWIKLINK OPTIONS



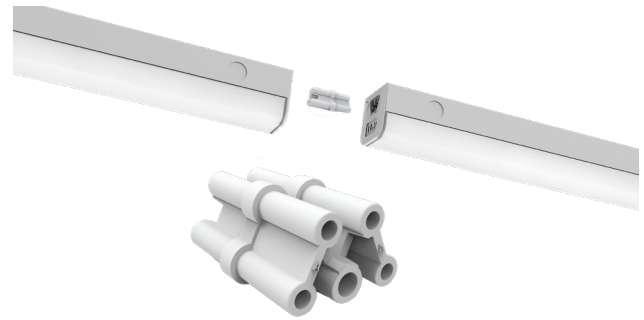
#### QWIKLINK CABLE

Available in 7.9" (QL20) & 60" (QL150) lengths allow for angled, corner & distant fixture connections. Showing QL20 on 2ft fixture



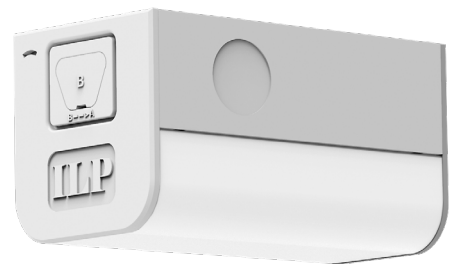
#### QWIKLINK CONNECTOR

Allows for toolless and seamless connection up to 64 linear feet per electrical power entry. QWIKLINK connection provides 0-10V dimming connection between fixtures. One QWIKLINK connector included with every fixture.



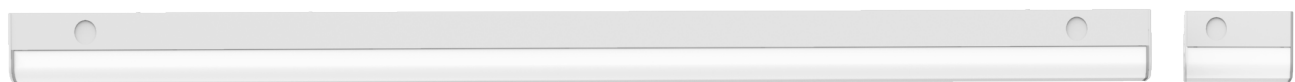
#### QWIKLINK SENSOR

Remote programmed field installed QWIKLINK sensor integrates with single or multiple fixtures for occupancy and photocell controls. Utilizing the included QWIKLINK connector allows the sensor to be installed within seconds with no additional wiring required in the field. The sensor mounts on the end of the fixture and can be placed in any location along a 64ft run to provide optimal motion sensing and energy savings.



FIXTURE

SENSOR



FIXTURE

SENSOR

FIXTURE

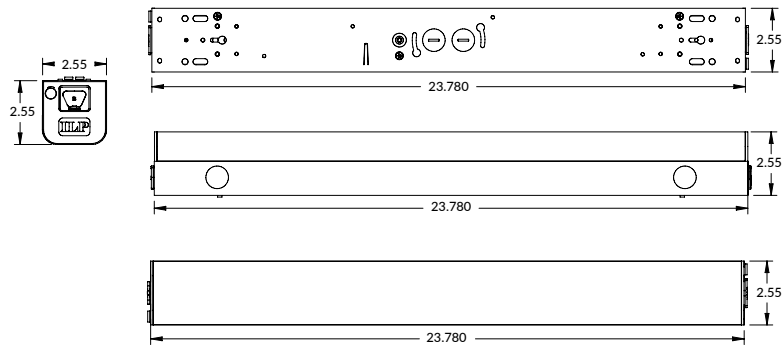


# QWIKLINK

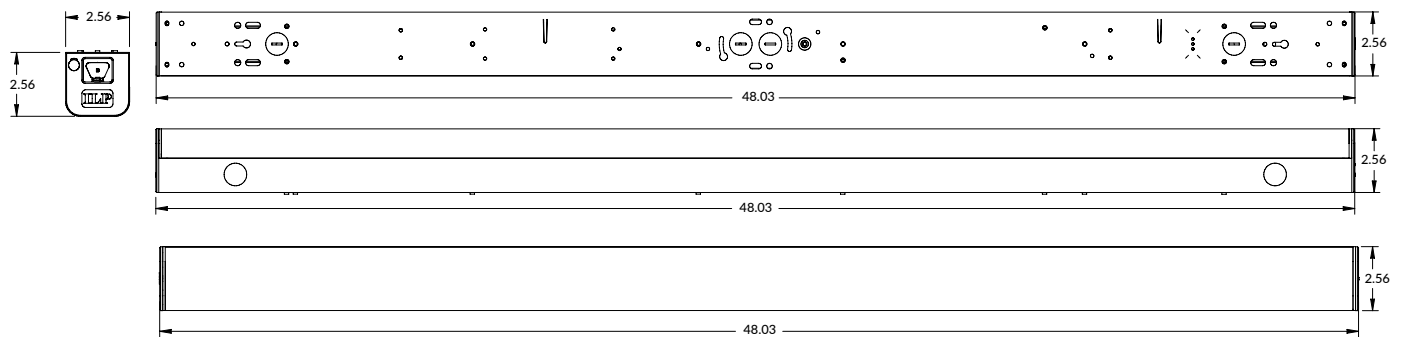
## Linear Strip

### LINE DRAWINGS

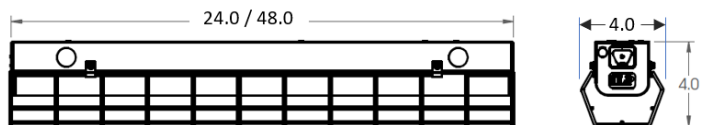
QL2:



QL4:



### Wire Cage Kits



# QWIKLINK

## Linear Strip

### PHOTOMETRIC DATA

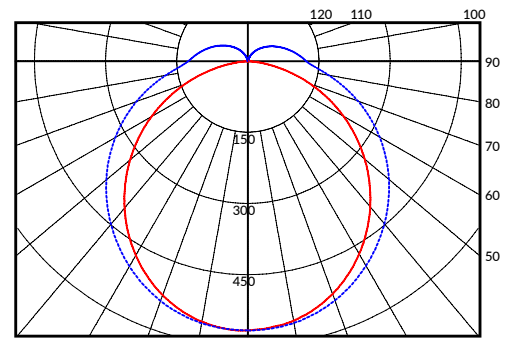
#### LUMINAIRE DATA

Part Number	QL2-20L-U-40
Description	2ft QWIKLINK Linear Strip, 2,000 lumens, 4000K
Fixture Lumens (lm)	2,064 lm
Wattage (W)	15 W
Efficacy (lm/W)	139 lm/W
Mounting	Surface
Spacing Criteria	0° = 1.30, 90° = 1.29

#### ZONAL LUMEN SUMMARY

Zone	Lumens (lm)	% Fixture
0° - 40°	731	35%
0° - 60°	1,324	64%
0° - 90°	1,839	89%
90° - 180°	225	11%
0° - 180°	2,064	100%

#### CANDELA PLOT



Totally Asymmetric Solid: 180-0 Degrees Dashed: 270-90 Degrees

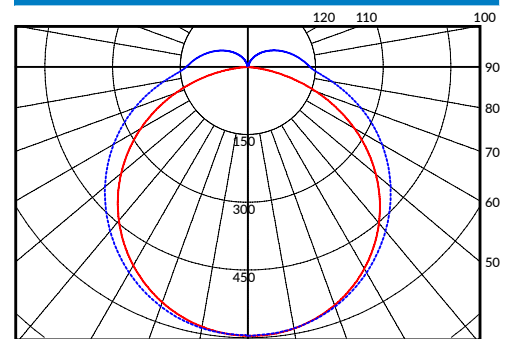
#### LUMINAIRE DATA

Part Number	QL4-22L-U-40
Description	4ft QWIKLINK Linear Strip, 2,300 lumens, 4000K
Fixture Lumens (lm)	2,276 lm
Wattage (W)	16 W
Efficacy (lm/W)	141 lm/W
Mounting	Surface
Spacing Criteria	0° = 1.30, 90° = 1.29

#### ZONAL LUMEN SUMMARY

Zone	Lumens (lm)	% Fixture
0° - 40°	779	34%
0° - 60°	1,431	63%
0° - 90°	2,013	88%
90° - 180°	263	12%
0° - 180°	2,276	100%

#### CANDELA PLOT



Totally Asymmetric Solid: 180-0 Degrees Dashed: 270-90 Degrees

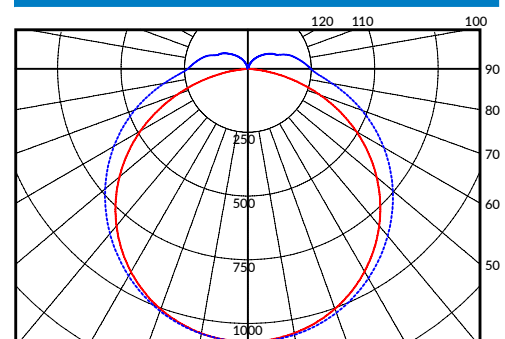
#### LUMINAIRE DATA

Part Number	QL4-39L-U-40
Description	4ft QWIKLINK Linear Strip, 4,000 lumens, 4000K
Fixture Lumens (lm)	4,059 lm
Wattage (W)	29 W
Efficacy (lm/W)	139 lm/W
Mounting	Surface
Spacing Criteria	0° = 1.30, 90° = 1.29

#### ZONAL LUMEN SUMMARY

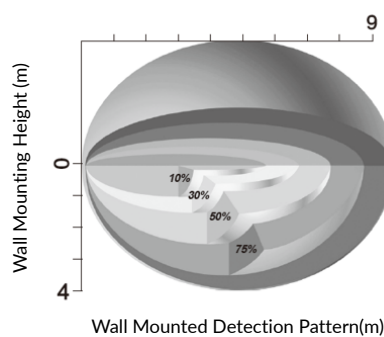
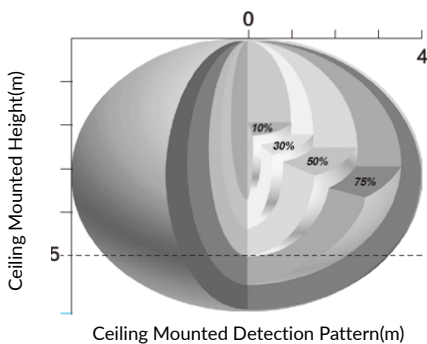
Zone	Lumens (lm)	% Fixture
0° - 40°	1,401	35%
0° - 60°	2,571	63%
0° - 90°	3,611	89%
90° - 180°	448	11%
0° - 180°	4,059	100%

#### CANDELA PLOT



Totally Asymmetric Solid: 180-0 Degrees Dashed: 270-90 Degrees

### SENSOR COVERAGE PATTERN



#### Sensor Dimensions

