

FL2103 FL2105 FL2106



Vanity

Features

Housing

Die-formed Cold-rolled Steel
 Finish Option: -62 Satin Nickel -30 Oil Rubbed Bronze

Optical

Shade: High Transmission Acrylic Create Excellent Light Distribution and Uniformity
 LED: High Efficiency, High CRI, Binned and Mixed to Reach Uniform Light.

Electrical

High Power Factor, Low THD

Lamp

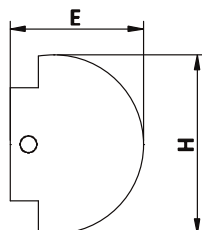
LED Type: Built-in (Color Temperature Option – 3000K, 3500K, 4000K, 5000K)
 LED MCT Type: Multiple Color Temperature – 3000K, 3500K, 4000K
 Fluorescent Type: T8 Lamp

Certification

UL/cUL, ETL/cETL Listed, Suitable for Damp Locations
 Energy Star

Warranty

5 Years Warranty on Driver and LED Module



LED Type

Model	Input Voltage	Input Wattage	LED CT / CRI	Lumen (TYP)	Finish	Dimension (L X H X E)	Energy Star
FL2103D-xxxxK	120V ~ 277V	23W	3000K / >80	2200	Satin Nickel	24.5" x 5.7" x 4.5"	Yes
FL2105D-xxxxK	120V ~ 277V	36W	3000K / >80	3260	Satin Nickel	36.5" x 5.7" x 4.5"	Yes
FL2106D-xxxxK	120V ~ 277V	46W	3000K / >80	4600	Satin Nickel	48.5" x 5.7" x 4.5"	Yes
FL2103D-MCT	120V ~ 277V	23W	3000K / >80	2200	Satin Nickel	24.5" x 5.7" x 4.5"	Yes
FL2105D-MCT	120V ~ 277V	36W	3000K / >80	3400	Satin Nickel	36.5" x 5.7" x 4.5"	Yes
FL2106D-MCT	120V ~ 277V	48W	3000K / >80	4600	Satin Nickel	48.5" x 5.7" x 4.5"	Yes

CFL Type

Model	Input Voltage	Input Wattage	Finish /Shade	Lamp	Dimension (L X W X H)
FL2103-217 HPF	120V ~ 277V	34W	Satin Nickel / Acrylic	2 x F17T8, 17W	24.5" x 5.7" x 4.5"
FL2105-225 HPF	120V ~ 277V	50W	Satin Nickel / Acrylic	2 x F25T8, 25W	36.5" x 5.7" x 4.5"
FL2106-232 HPF	120V ~ 277V	56W	Satin Nickel / Acrylic	2 x F32T8, 32W	48.5" x 5.7" x 4.5"