

FL5524D-K FL5539D-K

LED Vanity



Features

Housing

Die-formed Cold-rolled Steel

Finish Option: - 30 Oil Rubbed Bronze, - 62 Satin Nickel, -05 Black

Optical

Shade: High Transmission Glass Create Excellent Light Distribution and Uniformity

LED: High Efficiency, High CRI, Binned and Mixed to Reach Uniform Light.

Electrical

High Power Factor, Low THD

Lamp

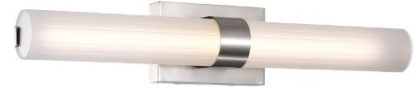
LED Module: Multiple Color Temperature Type (MCT, 3000K, 3500K, 4000K)

Certification

ETL/cETL Listed, Damp Rated

Warranty

5 Years Warranty on Driver and LED Module



LED Type

Model	Input Voltage	Input Wattage	LED CT	CRI	Lumen (TYP)	Finish	Shade	Dimension (L X H X E)
FL5524D-K -MCT -62	120V – 277V	17W	3000K, 3500K, 4000K	>80	970	Satin Nickel	Glass / Acrylic	24.5" x 4.8" x 4.0"
FL5539D-K -MCT-62	120V – 277V	23W	3000K, 3500K, 4000K	>80	1480	Satin Nickel	Glass / Acrylic	36.5" x 4.8" x 4.0"