



JOB NAME:

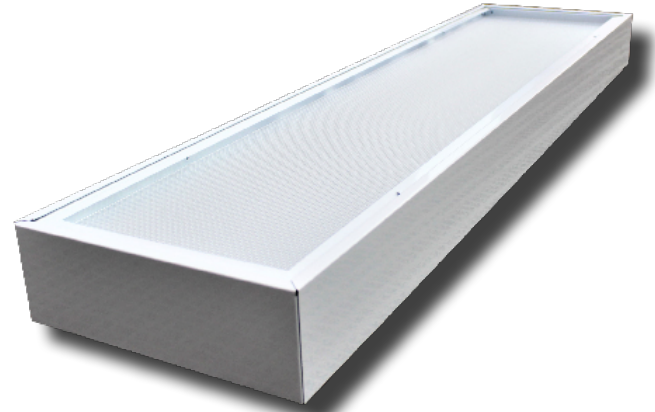
CAT#:

TYPE:

APPLICATIONS

Premium quality low profile surface troffer with an almost limitless range of applications. Ideal for all commercial and industrial buildings requiring general illumination with surface configurations.

Housing is die-formed and embossed from cold rolled steel. Wiring access plate and knockouts are provided on back of housing allowing for flexible greenfield attachment. Driver cover snaps easily into place eliminating the need for tools when accessing the driver. Prismatic lens is held within a hinged steel frame door. The heavy gauge door frame hinges downward on either side and is held in the closed position by two positive cam latches. Knockouts are provided on ends for continuous wiring. Listed by and bears ETL label.

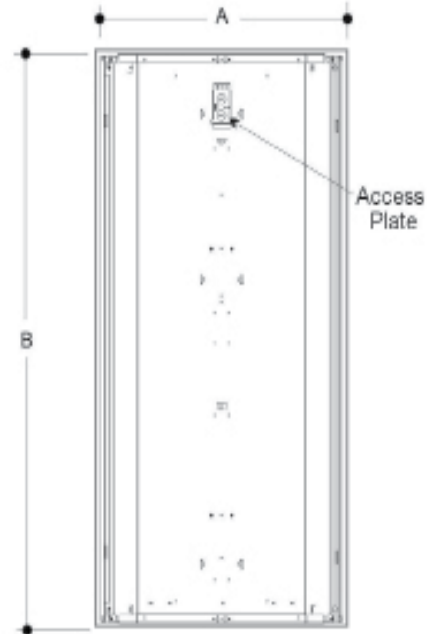
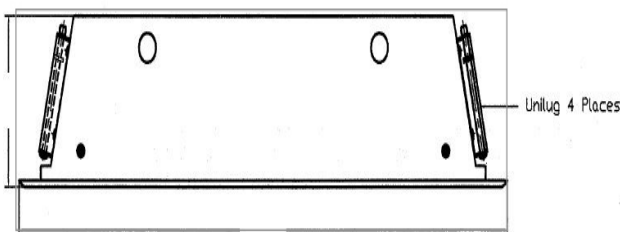
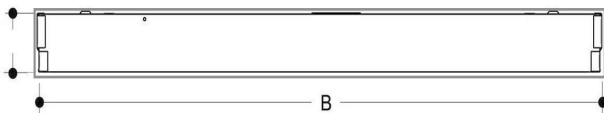


FEATURES & BENEFITS

- 0-10V Dimming Driver standard
- Corrosion and scratch resistant
- Smooth edges for easy handling
- Ends are secured by snap-in interlocking system
- Clear .100 acrylic prismatic lens is standard
- Exclusive "Light Lock" frame reduces light leaks
- Flush steel door with rotary action cam latches and hinges from either side
- Easy access plate for quick wiring
- Equipped with Integral Earthquake Clips
- cETL_{US} listed for damp location

DIMENSIONS

- 1x4:** 48"L x 11¾"W x 4"H
- 2x2:** 24"L x 23¾"W x 4"H
- 2x4:** 48"L x 23¾"W x 4"H



Dimensions and specifications subject to change without notice.





JOB NAME:

CAT#:

TYPE:

ORDERING

EXAMPLE: SRG 14 LED 22 DMV 30 EM G1

| SRG | | LED | | | | | | | | |
|------------|---|------------|---|--|--|---|--|--|---------------|--|
| 1. SERIES | 2. SIZE | 3. GEAR | 4. WATTAGE/LUMENS | | 5. DRIVER | | 6. LENS | | 7. COLOR TEMP | |
| SRG | 14 1x4 22 2x2 24 2x4 | LED | Standard 1x4 | | DMV 120-277V Multivolt 0-10V Dimmable | Blank A12 .100 thick lens 125 A12 .125 thick lens 156 A19 .156 thick lens CL Clear .100 thick lens CL125 Clear .125 thick lens SW Smooth White .100 thick lens DD Drop Dish Lens A78 78 Cell (2x4) or 36 Cell NL No Lens NFL No Frame and Lens (2x2) | 30 3000K 35 3500K 40 4000K 50 5000K | | | |
| | | | 22 22 Watts 2810 Lumens 30 30 Watts 3585 Lumens 35 35 Watts 4090 Lumens 40 40 Watts 4590 Lumens 48 48 Watts 5385 Lumens 57 57 Watts 6370 Lumens | | D347V 347VAC 0-10V Dimming D120 Triac Dimming 120VAC D277 Triac Dimming 277VAC | | | | | |
| | | | Standard 2x2 | | | | | | | |
| | | | 20 20 Watts 2300 Lumens 24 24 Watts 2600 Lumens 28 28 Watts 3000 Lumens 35 35 Watts 3600 Lumens 45 45 Watts 4470 Lumens | | | | | | | |
| | | | Standard 2x4 | | | | | | | |
| | | | 32 32 Watts 3970 Lumens 35 35 Watts 4345 Lumens 45 45 Watts 5500 Lumens 48 48 Watts 5900 Lumens 57 57 Watts 6735 Lumens 62 62 Watts 7000 Lumens 95 95 Watts 11000 Lumens | | | | | | | |

8. EMERGENCY (O)'

EM 10W ~1200 Lumen
Battery backup
EM5 5W ~600 Lumen
Battery backup

9. GASKETING (O)'

G1 Single Gasketing
G2 Double Gasketing
G3 Triple Gasketing

Consult factory for options

Notes:

'(O) is optional

Dimensions and specifications subject to change without notice.

