

ATG's DUO Linear Stairwell fixtures, available in 2', 4', and 8' lengths with selectable wattage & CCT settings, effectively illuminate stairwells and passageways in commercial and industrial applications. The LSW provides an appealing design while offering the latest, high performance components and options such as a concealed motion sensor and emergency battery backup.










Project Details		Type
Project:		
Product:		
Prepared by:		
Notes:		

Product Highlights
<ul style="list-style-type: none"> <li>• Selectable wattage &amp; CCT</li> <li>• Up to 152 LPW</li> <li>• 0 - 10V dimming</li> <li>• L70 &gt; 100,000 hours</li> <li>• 10-year warranty</li> </ul>

Product Specs	
Input Voltage (VAC)	100-277V / 100-347V
Wattage	10, 12, 14, 15, 18, 20, 25, 30, 40, 45, 60, 70, 80
CCT (K)	3000, 4000, 5000* Selectable
Projected Lifetime	100,000 Hrs (L70)
Limited Warranty	10 Years <sup>‡</sup>
CRI	80+
Finish Color	White (JA01WZ)**
Housing	Die Cast Aluminum
Optic Types	Frosted, Clear
Dimming	0-10V Dimming (0% to 100%)
Operating Temperature	-25°C ~ 40°C
IP Rating	IP20

\*contact sales for lead time and stock info on 3500K  
 \*\*contact sales for lead time on customized finish color  
 ‡see website for warranty terms

**Certifications and Compatibilities**

Order Format										Example: LSW-2FT-30-T1-F-SL			
Series	-	Length	-	Wattage	-	Selectable CCT	-	Lens	-	Option			
LSW	-	2FT	-	30	-	30W / 20W / 15W / 10W	-	T1	-				
	-	4FT	-	40	-	40W / 25W / 18W / 12W	-		-				
	-	8FT	-	80	-	80W / 70W / 60W / 45W	-		-				
	-		-		-	CCT + Wattage Selectable	-	F	-	SL			
	-		-		-	3000K/4000K/5000K	-	C	-	S1			
	-		-		-		-		-	EM			

Options	
SL	BRI-810-LV
S1	BRI-819
EM	EM-0825-010/105-P28

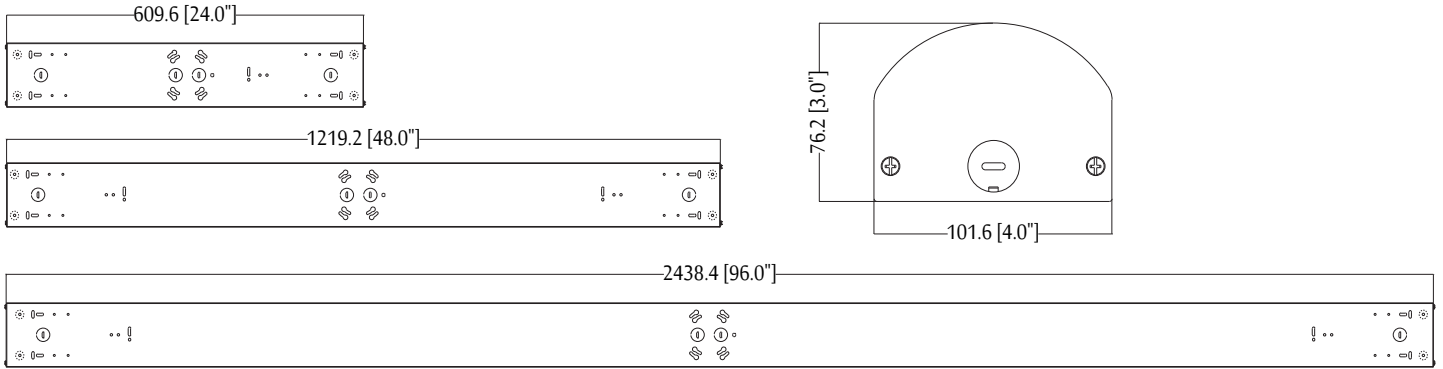
## Performance Chart

Model Number	Wattage	Voltage	CRI	Optics	THD	PF	CCT	Calc. L70
LSW-2FT-30-T1-F-10W-30K	10.43	100-277	80+	T1	<20%	>0.9	3000K/4000K/5000K Selectable	100,000 Hrs
LSW-2FT-30-T1-F-15W-30K	15.64	100-277	80+	T1	<20%	>0.9	3000K/4000K/5000K Selectable	100,000 Hrs
LSW-2FT-30-T1-F-20W-30K	19.52	100-277	80+	T1	<20%	>0.9	3000K/4000K/5000K Selectable	100,000 Hrs
LSW-2FT-30-T1-F-30W-30K	30.96	100-277	80+	T1	<20%	>0.9	3000K/4000K/5000K Selectable	100,000 Hrs
LSW-2FT-30-T1-C-10W-30K	10.43	100-277	80+	T1	<20%	>0.9	3000K/4000K/5000K Selectable	100,000 Hrs
LSW-2FT-30-T1-C-15W-30K	15.64	100-277	80+	T1	<20%	>0.9	3000K/4000K/5000K Selectable	100,000 Hrs
LSW-2FT-30-T1-C-20W-30K	19.52	100-277	80+	T1	<20%	>0.9	3000K/4000K/5000K Selectable	100,000 Hrs
LSW-2FT-30-T1-C-30W-30K	31.01	100-277	80+	T1	<20%	>0.9	3000K/4000K/5000K Selectable	100,000 Hrs
LSW-4FT-40-T1-F-12W-30K	11.29	100-277	80+	T1	<20%	>0.9	3000K/4000K/5000K Selectable	100,000 Hrs
LSW-4FT-40-T1-F-18W-30K	17.93	100-277	80+	T1	<20%	>0.9	3000K/4000K/5000K Selectable	100,000 Hrs
LSW-4FT-40-T1-F-25W-30K	24.89	100-277	80+	T1	<20%	>0.9	3000K/4000K/5000K Selectable	100,000 Hrs
LSW-4FT-40-T1-F-40W-30K	40.45	100-277	80+	T1	<20%	>0.9	3000K/4000K/5000K Selectable	100,000 Hrs
LSW-4FT-40-T1-C-12W-30K	11.29	100-277	80+	T1	<20%	>0.9	3000K/4000K/5000K Selectable	100,000 Hrs
LSW-4FT-40-T1-C-18W-30K	17.93	100-277	80+	T1	<20%	>0.9	3000K/4000K/5000K Selectable	100,000 Hrs
LSW-4FT-40-T1-C-25W-30K	24.89	100-277	80+	T1	<20%	>0.9	3000K/4000K/5000K Selectable	100,000 Hrs
LSW-4FT-40-T1-C-40W-30K	40.45	100-277	80+	T1	<20%	>0.9	3000K/4000K/5000K Selectable	100,000 Hrs
LSW-8FT-80-T1-F-45W-30K-120V	49	100-347	80+	T1	<20%	>0.9	3000K/4000K/5000K Selectable	100,000 Hrs
LSW-8FT-80-T1-F-60W-30K-120V	63	100-347	80+	T1	<20%	>0.9	3000K/4000K/5000K Selectable	100,000 Hrs
LSW-8FT-80-T1-F-70W-30K-120V	74	100-347	80+	T1	<20%	>0.9	3000K/4000K/5000K Selectable	100,000 Hrs
LSW-8FT-80-T1-F-80W-30K-120V	87	100-347	80+	T1	<20%	>0.9	3000K/4000K/5000K Selectable	100,000 Hrs

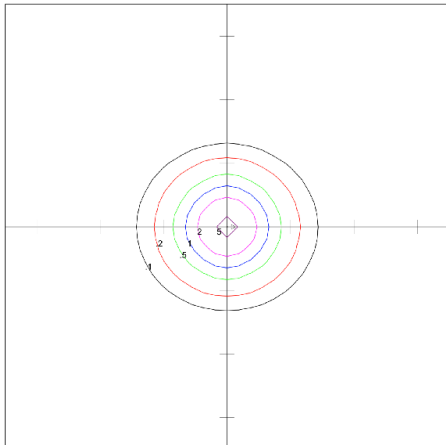
Model Number	3000K Frosted			3000K Clear		
	Watts	Efficacy (LPW)	Lumen (LM)	Watts	Efficacy (LPW)	Lumen (LM)
LSW-2FT-30-T1-[F,C]-SL 10W / 15W / 20W / 30W	10.4	130.0	1355.7	10.4	144.9	1511.2
	15.6	132.4	2071.5	15.6	149.9	2343.7
	19.5	132.4	2583.6	19.5	149.7	2923.1
	31.0	127.9	3966.5	31.0	145.0	4487.7
LSW-4FT-40-T1-[F,C]-SL 12W / 18W / 25W / 40W	11.3	130.3	1407.8	11.3	147.4	1664.1
	17.9	134.9	2418.7	17.9	152.6	2736.5
	24.9	134.8	3354.2	24.9	152.5	3794.9
LSW-8FT-80-T1-[F,C]-SL 45W / 60W / 70W / 80W	45	120	5400			
	60	120	7200			
	70	120	8400			
	80	120	9600			

**Dimensions**

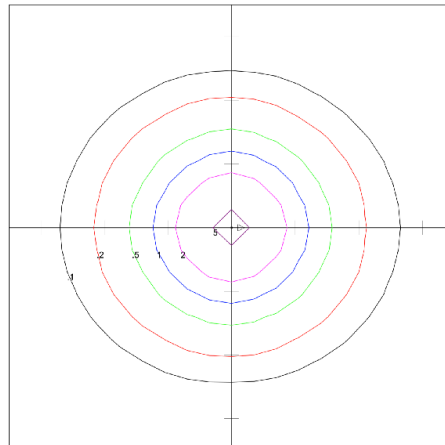
**LSW**



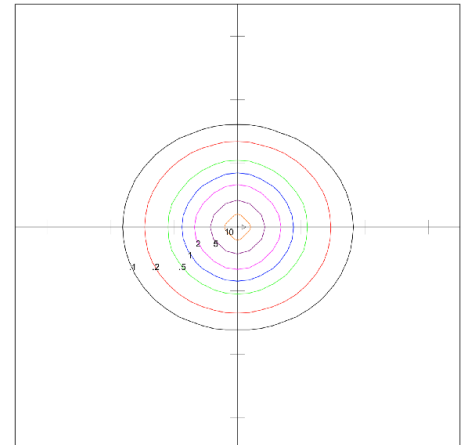
**Photometrics**



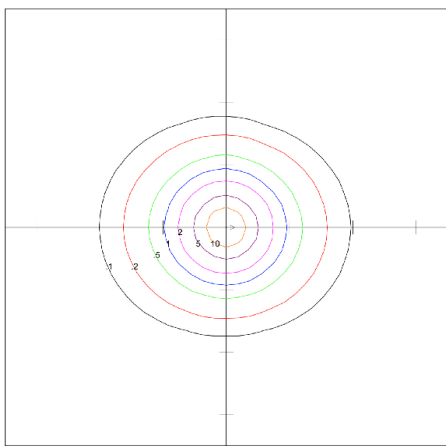
**LSW-2FT-30-T1-F-10W-30K**



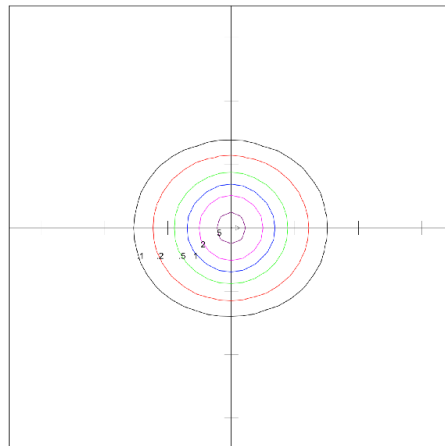
**LSW-2FT-30-T1-F-15W-30K**



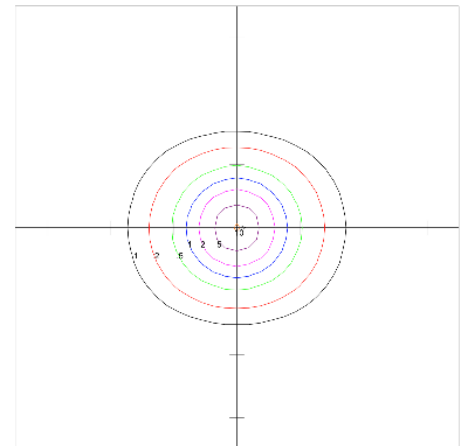
**LSW-2FT-30-T1-F-20W-30K**



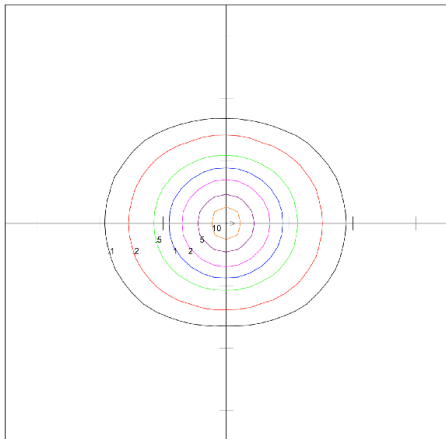
**LSW-2FT-30-T1-F-30W-30K**



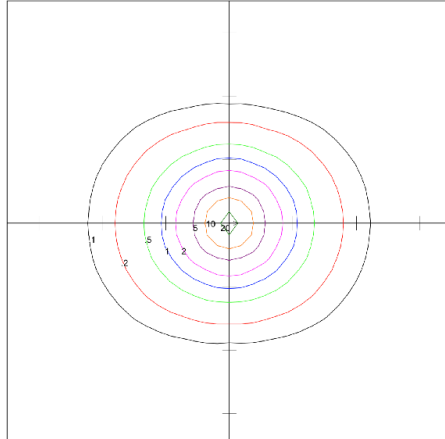
**LSW-4FT-40-T1-F-12W-30K**



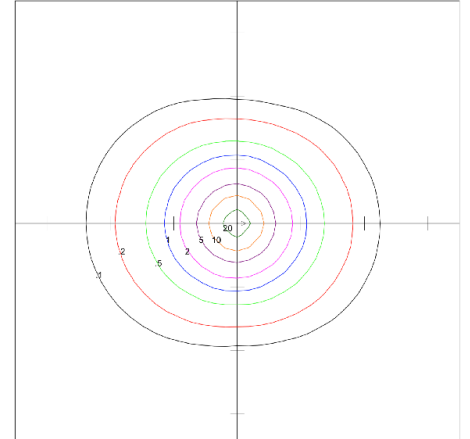
**LSW-4FT-40-T1-F-18W-30K**



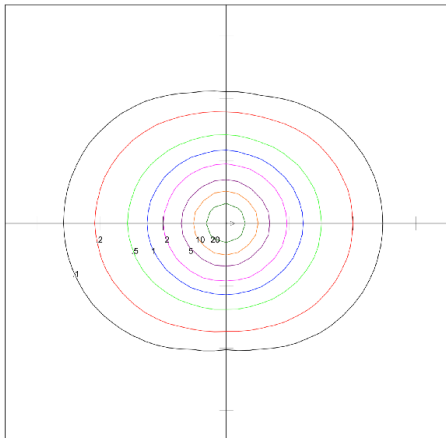
LSW-4FT-40-T1-F-25W-30K



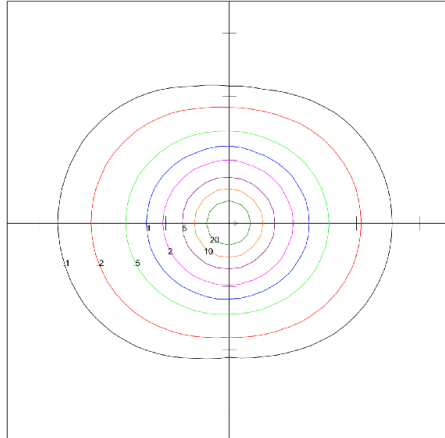
LSW-4FT-40-T1-F-40W-30K



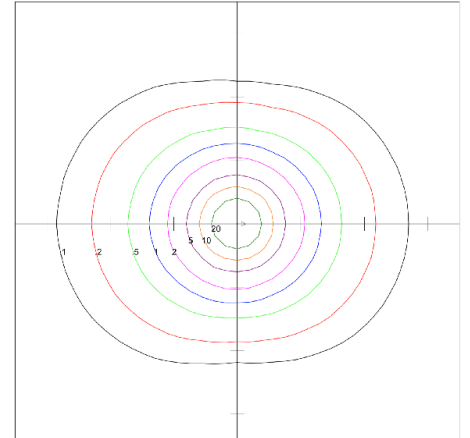
LSW-8FT-80-T1-F-45W-30K-120V



LSW-8FT-80-T1-F-60W-30K-120V



LSW-8FT-80-T1-F-70W-30K-120V



LSW-8FT-80-T1-F-80W-30K-120V

## Electrical Accessories

EM-0825-010/105-P28

### Emergency Driver Pack

UL listed emergency driver pack (with LiFePO4 battery) for indoor fixtures.

#### FEATURES

- |                  |                     |
|------------------|---------------------|
| • Input Voltage  | 120-277VAC 50/60 Hz |
| • Output Power   | 8W                  |
| • Output Voltage | 11-56VAC            |
| • Emergency      | 90 mins             |

[Download the PDF of the EM-0825-010 here.](#)



## BRI-810

### Bi-Level Sensor

The BRI810 is a moving object sensor with 360 detect range and 5.8GHz working frequency. It provides multi-level control based on motion and daylight contribution. It controls 0-10VDC LED drivers. Settings can be adjusted via remote controller.



#### FEATURES

- |                       |             |
|-----------------------|-------------|
| • Rated Voltage       | 120-277V    |
| • Rated Frequency     | 50/60 Hz    |
| • Remote Range        | 33ft        |
| • Ambient Temperature | -40°C~+70°C |

[Download the PDF of the BRI-810 here.](#)

## BRI-819

### Bi-Level and On/Off Sensor

The BRI819 indoor sensors provide multi-level occupancy control, controlling 0-10V LED drivers. All parameters are adjustable via a wireless configuration tool compatible of storing and transmitting sensor profiles.



#### FEATURES

- |                       |             |
|-----------------------|-------------|
| • Rated Voltage       | 120-277V    |
| • Rated Frequency     | 50/60 Hz    |
| • Remote Range        | 50ft        |
| • Ambient Temperature | -40°C~+70°C |

[Download the PDF of the BRI-819 here.](#)