

T8 SERIES COMMERCIAL INDOOR LIGHTING

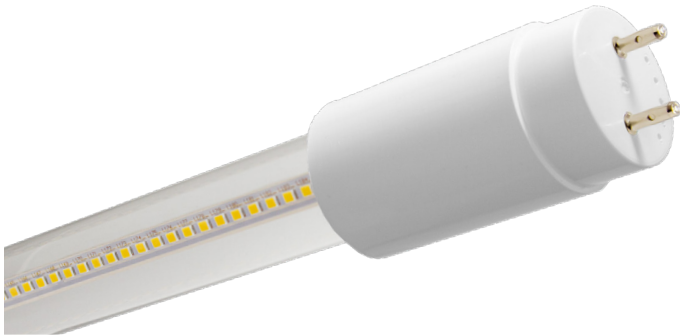
T8-4FT-TYPB-17W-40K-C
T8-4FT-TYPB-17W-50K-C

Customer Name: _____

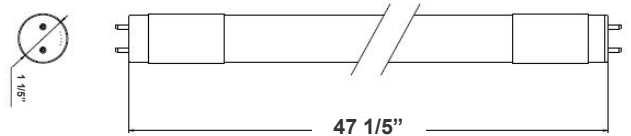
Project Name: _____

Note: _____

Type: _____



Glass tube provides better transparency and thermal conductivity than plastic ideal for offices, showrooms, refrigerators, cove lighting



47 1/5"(L)

Features

- Type B, AC Direct (Ballast Override)
- Connect One End or Both Ends (Dual Function)
- 5-Year Warranty
- Glass Lens

Technical Specifications

Electrical:

- Wattage: 17W
- Voltage: 120-277V; 50/60Hz AC
- Power Factor: >0.90
- THD: <20%
- Efficacy: 129 LPW

Mechanical:

- Base Type: G13
- Glass tube: Better Transparency and Thermal Conductivity than Plastic
- Clear Glass
- Ambient Operating Temperature: -13°F to 113°F
- Rated life: 50,000 hrs
- IP Rating: IP20 (Indoor)

Lighting:

- Dimming: Non Dimmable
- Total Lumens: 2200LM
- Color Temperatures: 4000K/5000K
- Color Rendering Index: CRI ≥ 80
- Beam Angle: 180°

Applications:

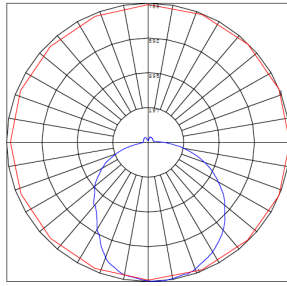
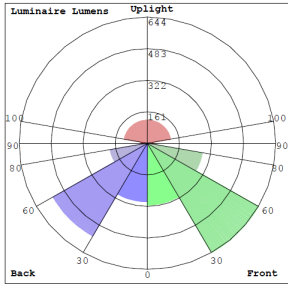
- Glass tube provides better transparency and thermal conductivity than plastic ideal for offices, showrooms, refrigerators, cove lighting

Other Models:

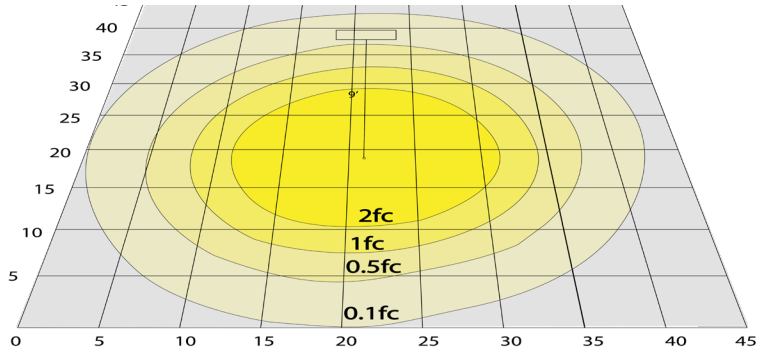
- 17W | 2200LM | T8-4FT-TYPB-17W-40K-C
- 17W | 2200LM | T8-4FT-TYPB-17W-50K-C



Photometrics: T8-4FT-TYPB-17W-C

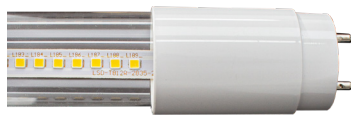


BUG Rating: B1-U3-G1

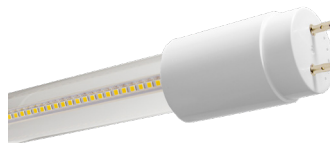


Simulation based on 5000K, Area 45'x 45' Mounting Height: 9'

Other Views:



Close-up View



End View



Socket View

Performance Table: T8-4FT-TYPB-17W-C

MODEL NO.	Wattage	Voltage	Lumens	Color Temp.	BUG Rating	LPW
T8-4FT-TYPB-17W-40K-C	17W	120-277V	2200LM	4000K	B1-U3-G1	129
T8-4FT-TYPB-17W-50K-C	17W	120-277V	2200LM	5000K	B1-U3-G1	129

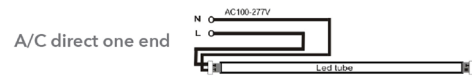
Sample Ordering

Model Size Type Watt Color Temp. Lens Type

T8 - 4FT - TYPB - 17W - - C

40K = 4000K
50K = 5000K

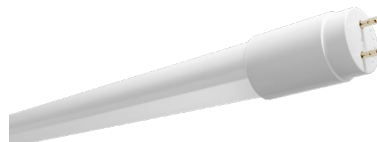
WIRING DIAGRAM:



Other Models: T8-4FT-TYPB-17W-F (Frosted Model)



Close-up View



End View



Socket View