

# ALLERO LED 25"

Architectural Indoor



PROJECT:	
TYPE:	
PO#:	QTY:
COMMENTS:	

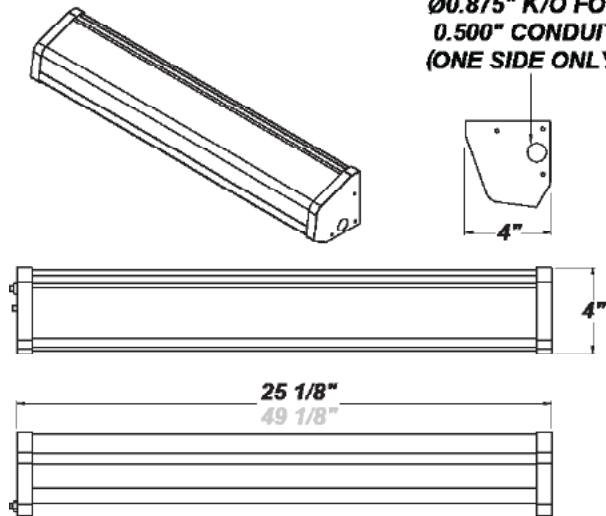


## FEATURES

- Steel Housing and End Caps w/ Matte Silver Powder Coat Finish
- Solid Top, Which Reduces Uplight
- 50% Impact Resistant Frosted DR Acrylic Diffuser Formulated For Use With LEDs
- Steel Reflector Plate w/ Hi-Reflectance White Powder Coat Finish
- Mounts Directly to Wall or Ceiling w/ Four Wall Anchors (Not Included)
- 0-10V and Trailing Edge (ELV) Dimming Compatible Options Available
- Constant Current, Dimmable 0-10V, 10%, 25%, And 50% Step Dimmable
- IES Files Available (Tested w/ Standard White Acrylic Lens Assembly)
- ADA Compliant
- CSA Listed Damp Location For Wall or Ceiling Mount
- LED Light Fixture
- Vandal Resistant

## LINE DRAWING

LINE DRAWING NOT TO SCALE

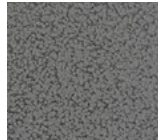


## FINISHES

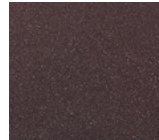
Antique Copper



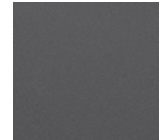
Antique Silver



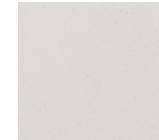
Bronze Mist



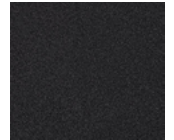
Matte Silver



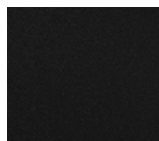
Sand



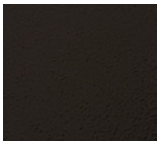
Swedish Steel



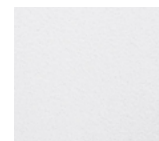
Textured Black



Textured Bronze



Textured White



For RAL Colors & Custom Match - Contact Teron Lighting Inc.

# ALLERO LED 25"

Architectural Indoor



Fixture Core

PROJECT:	
TYPE:	
PO#:	QTY:
COMMENTS:	

PRODUCT CODE	SOURCE/WATTAGE	VOLTAGE	DIMMING DRIVER
<b>AL024</b> - Allero 25"	<b>L20.1-ZE550</b> - 28W @ 550mA Constant Current Electronic Driver (Dimmable 0-10V)  <b>L20.1-TE550</b> - 22W @ 550mA Constant Current ELV Dimming Electronic Driver	<b>120V</b> <b>277V</b>	<b>Not Applicable</b>
ORDER INFO			
AL024 Example ^	L20.1-ZE550	120V	Not Applicable

Aesthetics & Options

TRIM	FINISH	COLOR TEMP	OPTIONS
<b>Not Applicable</b>	<b>AC</b> - Antique Copper <b>AS</b> - Antique Silver <b>BT</b> - Bronze Mist <b>SM</b> - Matte Silver (Standard) <b>SN</b> - Sand <b>SW</b> - Swedish Steel <b>TB</b> - Textured Black  <b>BZ</b> - Textured Bronze <b>TW</b> - Textured White	<b>27K</b> - 2700K Color Temp <b>30K</b> - 3000K Color Temp <b>35K</b> - 3500K Color Temp <b>40K</b> - 4000K Color Temp	<b>F</b> - Fused <b>FAL</b> - Frosted Acrylic Lens <b>TP</b> - Tamper Resistant Screws <b>WAL</b> - Frosted & White Acrylic Lens Assembly (Standard)
ORDER INFO			
Not Applicable Example ^	AC	27K	F

PROD	SOURCE	30K SPECS				
<b>ALO 25"</b>	L20.1	<ul style="list-style-type: none"> <li>30K - 3000K Color Temp</li> <li>2982 LED Source Lumens</li> <li>106.5 LED Source Lumens Per Watt</li> <li>1797 Delivered LED Lumens</li> <li>64.2 Delivered LED Lumens Per Watt</li> </ul>				

REPLACEMENT PART	PART NO	NOTES
Frosted 2' Acrylic Diffuser	3029662	
White 2' Acrylic Lens Assembly	38112	
		Don't see the configuration you are looking for? Call us today at (513) 858-6004



**TERONLIGHTING.COM**  
 33 DONALD DR, FAIRFIELD, OH 45014  
 P: 513.858.6004 F: 513.858.6038  
 E: SALES@TERONLIGHT.COM



We reserve the right to revise the design components of any product due to parts availability or change in UL standards, without assuming any obligation or liability to modify any products previously manufactured, and without notice.