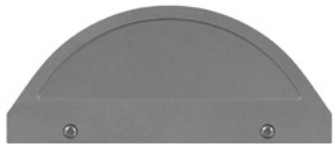


GUARDIAN M LED

Architectural Outdoor



PROJECT:	
TYPE:	
PO#:	QTY:
COMMENTS:	

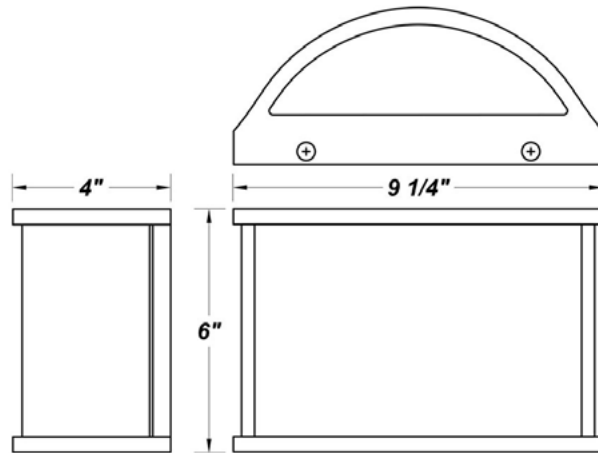


FEATURES

- Extruded Aluminum Housing w/ Matte Silver Polyester Powder Coat Finish
- Die Cast Aluminum End Caps w/ Matte Silver Polyester Powder Coat Finish
- High Impact White Acrylic Diffuser (50% DR Acrylic)
- Aluminum LED Mounting Plate
- Recessed Stainless Steel Screws
- Fixture Mounts Directly to Surface w/ Two Wall Anchors (Not Included)
- ADA Compliant
- CSA Listed Wet Location For Wall Mount Only
- LED Light Fixture
- Vandal Resistant

LINE DRAWING

LINE DRAWING NOT TO SCALE

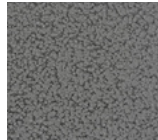


FINISHES

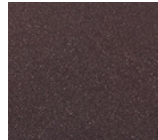
Antique Copper



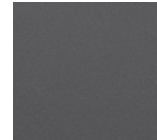
Antique Silver



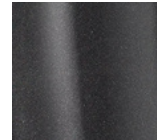
Bronze Mist



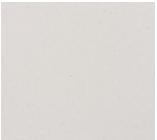
Matte Silver



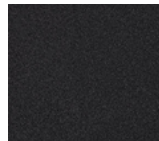
Metallic Black



Sand



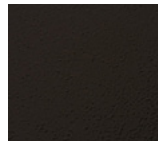
Swedish Steel



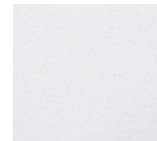
Textured Black



Textured Bronze



Textured White



For RAL Colors & Custom Match - Contact Teron Lighting Inc.

GUARDIAN M LED

Architectural Outdoor



Fixture Core

PROJECT:	
TYPE:	
PO#:	QTY:
COMMENTS:	

PRODUCT CODE	SOURCE/WATTAGE	VOLTAGE	DIMMING DRIVER
GRDM - Guardian M	L12.3-350mA - 12.3W @350mA Constant Current Driver L12.3-TE350 - 12.3W @350mA ELV Low Voltage 2-Wire Electronic Driver, (Drivers Dimmable at 120V or 277V With Either Triac or Electronic Dimmers)	120 - 277V	Not Applicable
ORDER INFO			
GRDM	L12.3-350mA	120 - 277V	Not Applicable

Example ^ (may not represent a manufacturable product)

Aesthetics & Options

TRIM	FINISH	COLOR TEMP	OPTIONS
Not Applicable	AC - Antique Copper AS - Antique Silver BT - Bronze Mist MB - Metallic Black SM - Matte Silver (Standard) SN - Sand SW - Swedish Steel TB - Textured Black BZ - Textured Bronze TW - Textured White	27K - 2700K Color Temp 30K - 3000K Color Temp 35K - 3500K Color Temp 40K - 4000K Color Temp 50K - 5000K Color Temp	SP - Surge Protector OEL - Single End Window TEL - Twin End Windows (Both Ends)
ORDER INFO			
Not Applicable	AC	27K	SP

Example ^ (may not represent a manufacturable product)

PROD	SOURCE	30K SPECS				
GRDM	L12.3	<ul style="list-style-type: none"> 80 CRI Typ. 30K - 3000K Color Temp 1740 LED Source Lumens 141.5 LED Source Lumens Per Watt 				

REPLACEMENT PART	PART NO	NOTES
White Acrylic LED Lens	3036460	

Don't see the configuration you are looking for?
Call us today at (513) 858-6004



TERONLIGHTING.COM
33 DONALD DR, FAIRFIELD, OH 45014
P: 513.858.6004 F: 513.858.6038
E: SALES@TERONLIGHT.COM



We reserve the right to revise the design components of any product due to parts availability or change in UL standards, without assuming any obligation or liability to modify any products previously manufactured, and without notice.

GUARDIAN M LED

Architectural Outdoor



Fixture Core

PROJECT:	
TYPE:	
PO#:	QTY:
COMMENTS:	

PRODUCT CODE	SOURCE/WATTAGE	VOLTAGE	DIMMING DRIVER
GRDM - Guardian M	L17.1-500mA - 12.3W @500mA Constant Current Driver	120 - 277V	Not Applicable
ORDER INFO			
GRDM	L17.1-500mA	120 - 277V	Not Applicable

Example ^ (may not represent a manufacturable product)

Aesthetics & Options

TRIM	FINISH	COLOR TEMP	OPTIONS
Not Applicable	AC - Antique Copper AS - Antique Silver BT - Bronze Mist MB - Metallic Black SM - Matte Silver (Standard) SN - Sand SW - Swedish Steel TB - Textured Black BZ - Textured Bronze TW - Textured White	27K - 2700K Color Temp 30K - 3000K Color Temp 35K - 3500K Color Temp 40K - 4000K Color Temp 50K - 5000K Color Temp	SP - Surge Protector OEL - Single End Window TEL - Twin End Windows (Both Ends)
ORDER INFO			
Not Applicable	AC	27K	SP

Example ^ (may not represent a manufacturable product)

PROD	SOURCE	30K SPECS				
GRDM	L17.1	<ul style="list-style-type: none"> 80 CRI Typ. 30K - 3000K Color Temp 2485 LED Source Lumens 145.3 LED Source Lumens Per Watt 				

REPLACEMENT PART	PART NO	NOTES
White Acrylic LED Lens	3036460	

Don't see the configuration you are looking for?
Call us today at (513) 858-6004



TERONLIGHTING.COM
 33 DONALD DR, FAIRFIELD, OH 45014
 P: 513.858.6004 F: 513.858.6038
 E: SALES@TERONLIGHT.COM



We reserve the right to revise the design components of any product due to parts availability or change in UL standards, without assuming any obligation or liability to modify any products previously manufactured, and without notice.