

W193D

Wall Sconce



Features

Housing

Die-formed Cold-rolled Steel
Finish Option: -62 Satin Nickel -30 Oil Rubbed Bronze

Optical

Shade: High Transmission Glass Creates Excellent Light Distribution and Uniformity
LED: High Efficiency, High CRI, Binned and Mixed to Reach Uniform Light

Electrical

High Power Factor, Low THD

Lamp

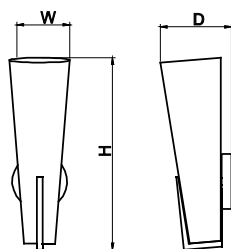
Integrate LED Module , Color Temperature Option 3000K, 3500K, 4000K, 5000K

Certification

ETL/cETL Listed, Suitable for Damp Locations

Warranty

5 Years Limited Warranty on Driver and LED



LED Type

Model	Input Voltage	Input Wattage	LED CT	CRI	Lumen (TYP)	Finish/Shade	Dimension (H x W x E)	Energy Star
W193D-xxxxK	120V-277V	15W	3000K	>80	1180	Satin Nickel / Opal Glass	15.5" x 5.0" x 5.8"	---