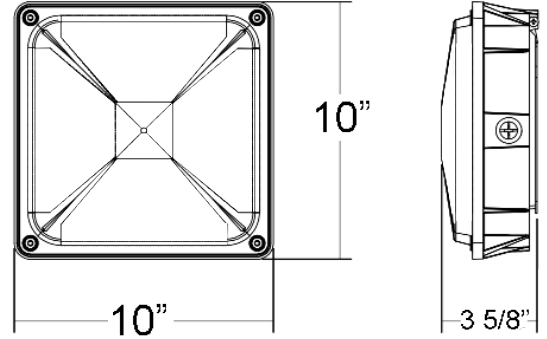


CDL2 SERIES OUTDOOR LIGHTING

CDL2-45CW
CDL2-45NW
CDL2-45WW



Customer Name: _____
Project Name: _____
Note: _____ | Type: _____



10"(L) X 10" (W) X 3 5/8"(H)

Ideal for indoor parking lots, commercial buildings, schools, warehouses, retail centers, apartment complexes. Designed for 9 to 16-foot mounting.

Features

- Housing: Die-cast aluminum with prismatic polycarbonate lens redesigned for LED
- Designed for 9 to 16 foot mounting heights
- Factory-Installed Options: Battery Backup, Motion Sensor
- 7-year warranty

Technical Specifications

Electrical:

- Input Wattage: 45W
- Input Current: 0.6A MAX
- Input Voltage: 120-277VAC 50/60Hz
- Power factor: >0.90
- Other wattages: 25W/ 60W/ 80W

Mechanical:

- Die-cast aluminum with bronze
- Four 1/2" threaded hubs located on four sides of the housing
- Prismatic polycarbonate lens
- Lifespan: 70000 Hrs
- Operating temperature: -4°F ~ 104°F
- IP rating: IP65, Wet Locations

Lighting:

- Dimming: 0~10V dimmable
- LED type/ Brand: SMD 3030/ Philips Lumileds LEDs
- Total lumens: 4200 LM/ 4300 LM/ 4400 LM
- Color temperature: 3000K/ 4000K/ 5000K
- Color rendering index: >80
- Beam angle: 150°

Applications:

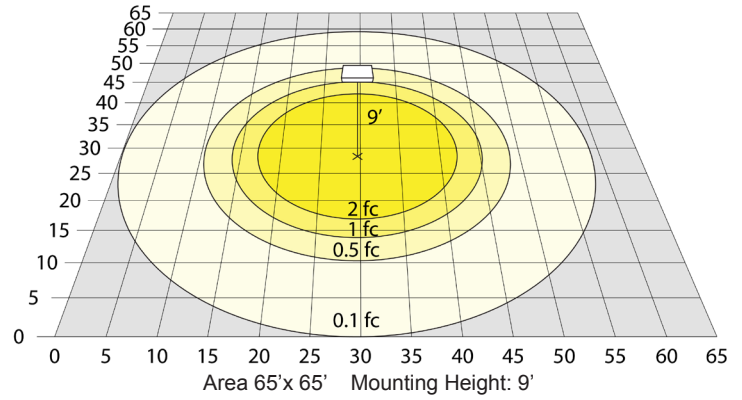
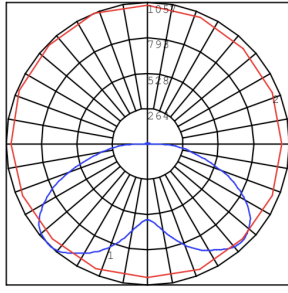
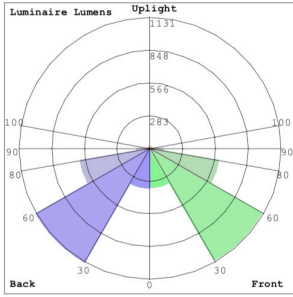
- Indoor Parking
- Commercial Buildings
- School
- Warehouses
- Complexes
- Apartment
- Garage

Other Models:

- | | | |
|----------------------------|----------------------------|----------------------------|
| • 25W 2880LM CDL2-25CW | • 60W 7400LM CDL2-60CW | • 80W 9500LM CDL2-80CW |
| • 25W 2800LM CDL2-25NW | • 60W 7100LM CDL2-60NW | • 80W 9400LM CDL2-80NW |
| • 25W 2780LM CDL2-25WW | • 60W 7100LM CDL2-60WW | • 80W 9400LM CDL2-80WW |



Photometrics: CDL2-45W

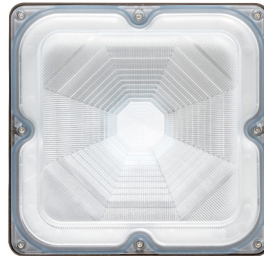


BUD Rating: B2-U2-G2

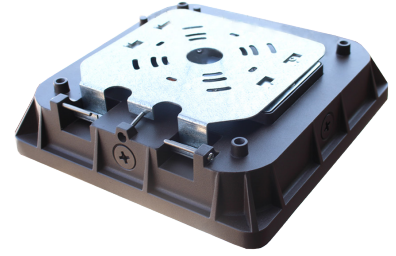
Other Views:



Side View



Front View



Back View

Performance Table: CDL2-45W

MODEL NO.	Wattage	Voltage	Lumens	Color Temp.	BUG Rating	LPW
CDL2-45CW	45W	120~277V	4400LM	5000K	B2-U2-R2	97
CDL2-45NW	45W	120~277V	4300LM	4000K	B2-U2-R2	95
CDL2-45WW	45W	120~277V	4200LM	3000K	B2-U2-R2	93

Sample Ordering

Model Wattage Color Temp.

CDL2 - 45W -

WW = 5000K
NW = 4000K
CW = 5000K

Factory Installed Options

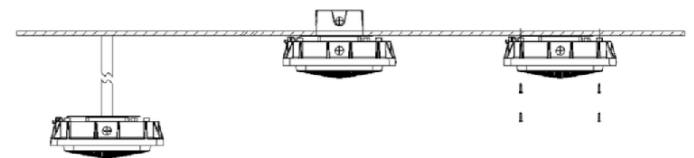
Blank

Blank = No Option For Factory-Instalaeed
OPT-EM-FM1INT = INTERNAL EMERGENCY BACKUP BATTERY
OPT-SEN-3MR-4 = PROGRAMMABLE MICROWAVE BI-LEVEL SENSOR
OPT-PC-B = PHOTOCCELL
WEC-8RC= OPTIONAL REMOTE CONTROL
OPT-TRS-T20= TAMPER RESISTANT SCREW

SENSOR AND REMOTE CONTROL OPTIONS



MOUNTING OPTIONS



Example:

1. CDL2-45CW
2. CDL2-45CW
WEC-8RC
3. CDL2-45CW
WEC-8RC
OPT-SEN-3MR-4

(CDL2 45W 5000K fixture 120V-277V)

(CDL2 45W 5000K fixture 120V-277V)
(Remote Control)

(CDL2 45W 5000K fixture 120V-277V)
(Remote Control)
(Programmable Microwave Bi-Level)

WESTGATE

Phone: (877) 805-2252 | Fax: (877) 805-2252
www.westgatemfg.com | www.westgatecontrols.co

