

LFCO SERIES

Outdoor Lighting

WESTGATE
THE FUTURE IS HERE...AND IT'S QUITE BRIGHT!

LFCO-100W-40K
LFCO-100W-50K

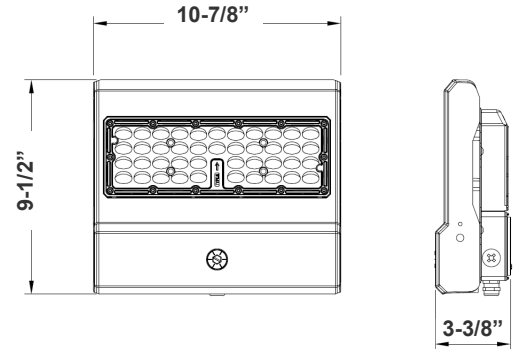


Customer Name: _____

Project Name: _____

Note: _____

Type: _____



9-1/2"(L) x 10-7/8"(W) x 3-3/8"(H)

Ideal for general site lighting, alleys, loading docks, doorway, pathway, and parking areas.

Features

- LED Flood Light
- With snap-on & bolt mounting options for one-person installations.
- Select a mounting option (Sold separately)
- 70,000 Hours Rated Life
- 7-Year Warranty
- Optic Lens Type: III

Technical Specifications

Electrical:

- Voltage: 100-277VAC 50/60Hz
- Wattage: 100W
- Power Factor: >0.9
- Output Current: 0.25A
- Efficacy: 140 LPW
- THD: <20%

Mechanical:

- Housing: Die-cast Aluminum Housing with Powder Coat Finish (Dark Bronze)
- 6KV Lightning Surge Protection
- IP Rating: IP65
- Operating Temperature: -40°F to 104°F
- Suitable for Wet Locations
- Effective projected areas (EPA's) are:
 - Front = 0.38 square feet
 - Side = 0.30 square feet
 - Face = 1.05 square feet

Lighting:

- Dimmable: 0~10V Dimming
- LED: Lumileds Lixeon 3030 high flux LED
- Solid State Lighting technology for long life, no Maintenance needed and High-Efficiency
- Lens Type: Optical TYPE III Lens, High Light TransmittancePC, Anti-UV and Flame Resistant
- Cord Type: 3.2' SJTW 18/3 AWG cable
- Total lumens: 14000LM
- Color Temperature: 4000K/ 5000K
- Color Rendering index: CRI ≥ 70
- Beam Angle: 140°x80°

Applications:

- Ideal for general site lighting, alleys, loading docks, doorway, pathway and parking areas.
- Replace existing HID flood lights/ wall packs

Other Models:

- | | | |
|--------------------------------|----------------------------------|--|
| • 50W 6900LM LFCO-50W-40K | • 150W 19900LM LFCO-150W-40K | • 300W 41000LM LFCO-300W-40K |
| • 50W 6900LM LFCO-50W-50K | • 150W 19900LM LFCO-150W-50K | • 300W 41000LM LFCO-300W-50K |
| • 80W 10800LM LFCO-80W-40K | • 230W 30100LM LFCO-230W-40K | • 600W 86000LM LFCO-HL-600W-50K-TR |
| • 80W 10800LM LFCO-80W-50K | • 230W 30100LM LFCO-230W-50K | |



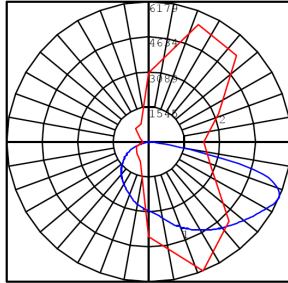
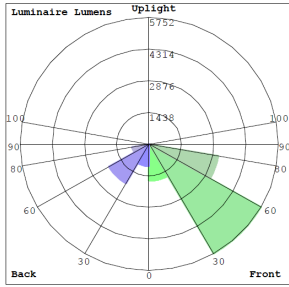
Phone: (877) 805-2252 | Fax: (877) 805-2252
www.westgatemfg.com | www.westgatecontrols.co



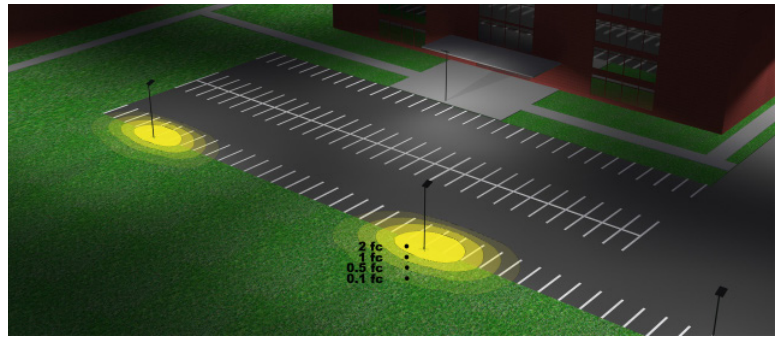
WG-Z5-Z6-Z2

Photometrics: LFCO-100W

TYPE III



BUD Rating: B2-U1-G2



Area 85'x 138' Mounting Height: 20'

Other Views:



Front View



Side View



Back View

Performance Table: LFCO-100W

MODEL NO.	Wattage	Voltage	Lumens	Color Temp.	BUG Rating	LPW
LFCO-100W-40K	100W	120~277V	14000LM	4000K	B2-U1-G2	140
LFCO-100W-50K	100W	120~277V	14000LM	5000K	B2-U1-G2	140

Sample Ordering

Model	Wattage	Color Temp.
LFCO	100W	
		40K = 4000K 50K = 5000K

Accessories Options

Blank = No Option For Accessories
WEC-8RC = Optional Motion Sensor Remote Control

Factory-Installed Options

Blank = No Option For Accessories
OPT-EM-OD2EXT = Emergency Battery Backup
OPT-3MPC = Microwave Photocell with a 1/2" threaded
OPT-SEN-3MR-3 = Programmable Microwave Bi-Level Sensor

MOUNTING OPTIONS:



ACCESSORIES:

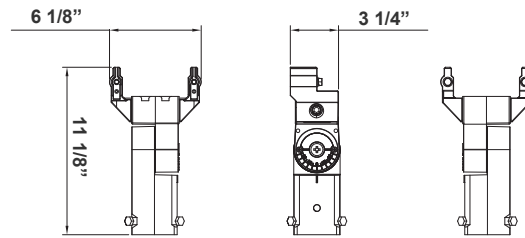
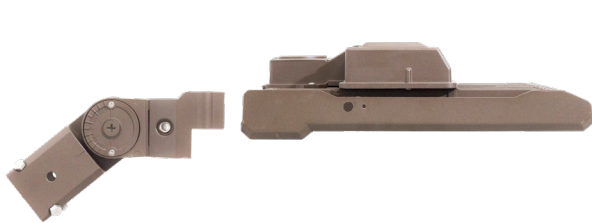


Example:

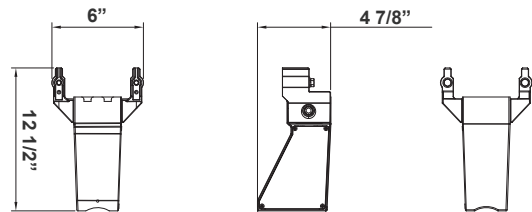
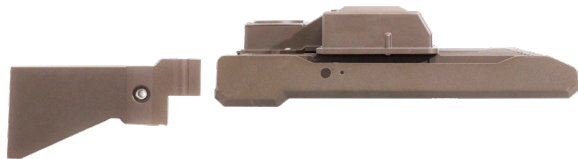
- LFCO-100W-40K (For LFCO 100W 4000K fixture 120-277V)
- LFCO-100W-40K (For LFCO 100W 4000K fixture 120-277V)
- WEC-8RC (Remote Control)
- OPT-SEN-3MR-3 (Programmable Microwave Bi-Level Sensor)



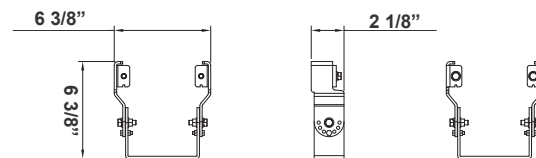
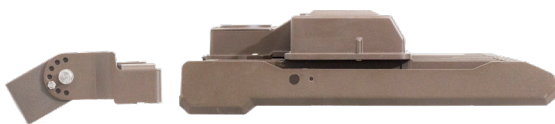
MOUNTING OPTIONS:



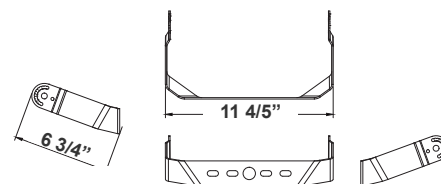
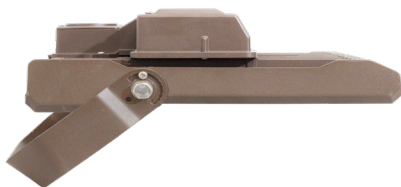
Model	DESCRIPTION	DIMENSION
LFCO-SF	Adjustable Slip Fitter for Pole Mount 2"—2-1/2"	6 1/8" X 11 1/8" X 3 1/4"



Model	DESCRIPTION	DIMENSION
LFCO-SA	Straight Arm for Shoe Box Applications Fits Square & Round Poles 3" Wide	6" X 12 1/2" X 4 7/8"



Model	DESCRIPTION	DIMENSION
LFCO-YK	Adjustable Yoke	6 3/8" X 6 3/8" X 2 1/8"



Model	DESCRIPTION	DIMENSION
LFCO-TR1	"U" Bracket	6 3/4" X 11 4/5"

