

# LHCX SERIES Industrial Lighting

LHCX-110-150W-MCTP-SR  
X-GENERATION COMPACT LINEAR HIGHBAY

**MCTP** Multi Color Temperature & Multi Power/Wattage (Selectable)

**WESTGATE**  
THE FUTURE IS HERE...AND IT'S QUITE BRIGHT!



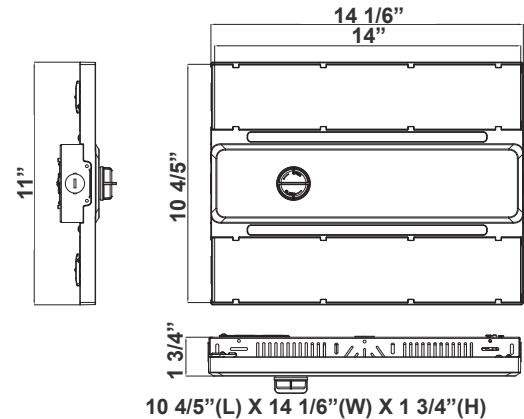
Ideal for replacement of conventional lighting systems such as HID and fluorescent. Applications include manufacturing warehousing and other large indoor spaces with mounting heights from 10ft. to 40ft. the fixture can be surface mounted also.

Customer Name: \_\_\_\_\_

Project Name: \_\_\_\_\_

Note: \_\_\_\_\_

Type: \_\_\_\_\_



## Features

- High Quality LED Chips to provide high efficiency, heat dissipation
- Stability, and lumen maintenance
- Multi CCT and Power: The Switch is in the driver
- Polycarbonate lens, high flame retardant point.

## Technical Specifications

### Electrical:

- Voltage: 120~277V AC/50~60 Hz
- Wattage: 80W/110W/150W
- Power Factor: >0.95
- Efficacy: 140 LM/W

### Mechanical:

- Surge Protector
- Steel Housing
- Steel Thickness: 24 Gauge
- V-Hooks
- Aluminum LED board
- Operating Temperature: -4°F ~ 131°F
- Suitable For Damp Locations
- 5-Year Warranty

### Lighting:

- Dimming: 1~10V Dimmable
- Multi CCT and Power: The Switch is On The Driver
- Lens: Polycarbonate Lens
- Total Lumens: 21000LM Max.
- Color Temperatures: 3000K/4000K/5000K
- Color Rendering Index: >80
- Wide Beam angle
- LED SMD type: Edison 2835
- 50,000 hours rated life

### Applications:

- Warehouse
- Manufacturing Plants Distribution Centers
- Industrial Commercial
- Grocery Stores Gymnasiums

### Other Models:

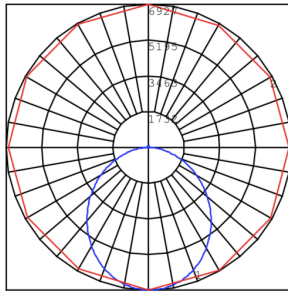
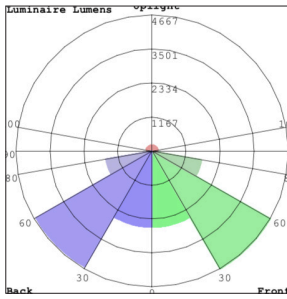
- 215W | 30100LM | LHCX-165-215W-MCTP-SR
- 320W | 44800LM | LHCX-255-320W-MCTP-SR



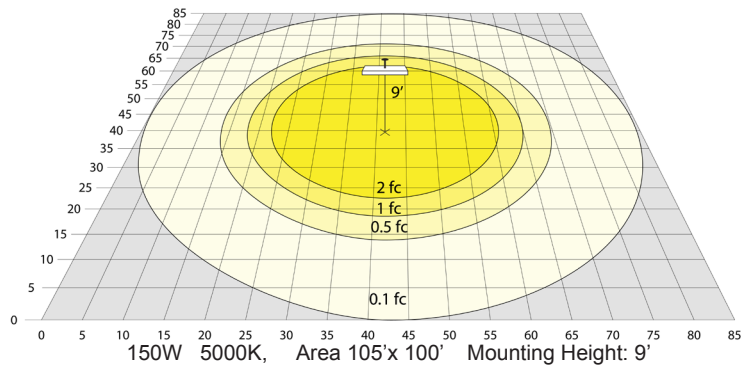
Phone: (877) 805-2252 | Fax: (877) 805-2252  
www.westgatemfg.com



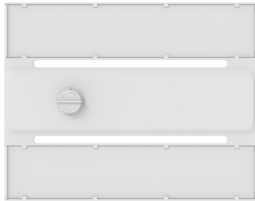
## Photometrics: LHCX-110-150W-MCTP-SR



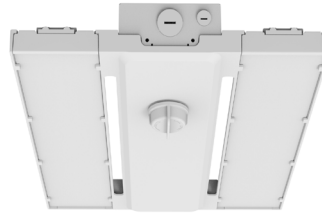
BUG Rating: B5-U3-G4



## Other Views:



Front View



Side View



Back View

## Performance Table: LHCX-110-150W-MCTP-SR

MODEL NO.	Wattage	Voltage	Lumens	Color Temp.	BUG Rating	LPW
LHCX-110-150W-MCTP-SR	110W 130W 150W	120~277V	15400LM 18200LM 21000LM	3000K 4000K 5000K	B4-U3-G2	140

## Sample Ordering

Model Wattage Wattage Color Temp. Sensor Ready

LHCX - 110 - 150W - MCTP - SR

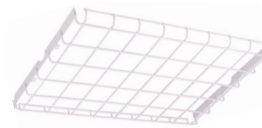
## Accessory Options

LHCX-SMK = SURFACE-MOUNTING KIT  
 LHCX-WG1 = WIREGUARD FOR 150W MAX MODEL  
 WEC-3MR-72-TLB-BK = 600W MAX, ZHAGA 12-24VDC MICROWAVE SENSOR, BLACK, WITH BASE (OPTIONAL REMOTE CONTROL WEC-3RC)  
 WEC-3MBT-72-TLB-BK = 600W MAX, ZHAGA 12-24VDC MICROWAVE SENSOR, BLUETOOTH APP READY, BLACK, WITH BASE (OPTIONAL REMOTE CONTROL WEC-3RC)  
 WEC-3PR-72-TLB-WH = 600W MAX, ZHAGA 12-24VDC PIR SENSOR, WHITE, WITH BASE (OPTIONAL REMOTE CONTROL WEC-3RC)

## Factory-Installed Options

Blank = No Option  
 OPT-SEN-LLHB4 = MICROWAVE Bi-Level SENSOR  
 OPT-EM-HB4EXT = EXTERNAL EMERGENCY BATTERY BACKUP  
 OPT-FWH-63 = 6FT 3-WIRE WHIP  
 OPT-FWH-65 = 6FT 5-WIRE WHIP  
 OPT-FWH-66 = 6FT 6-WIRE WHIP  
 OPT-HBC-125TL-WH = 8FT, 15A, 125V, WHITE  
 OPT-HBC-277TL-WH = 8FT, 15A, 277V, WHITE  
 OPT-HBC-125SB-WH = 10FT, 15A, 125V, 18/3STR, WHT

## OPTIONAL ACCESSORIES



LHCX-WG1



WEC-3PR-72-TLB-WH



WEC-3MR-72-TLB-BK  
 WEC-3MBT-72-TLB-BK

## FACTORY-INSTALLED OPTION:



OPT-EM-HB4EXT

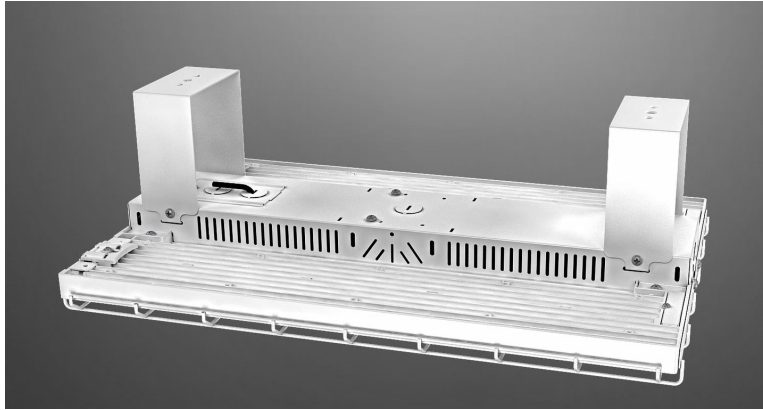


OPT-SEN-LLHB4



---

**OPTIONAL ACCESSORIES**



LHCX SMK



LHCX SMK



LHCX WIREGUARD

