

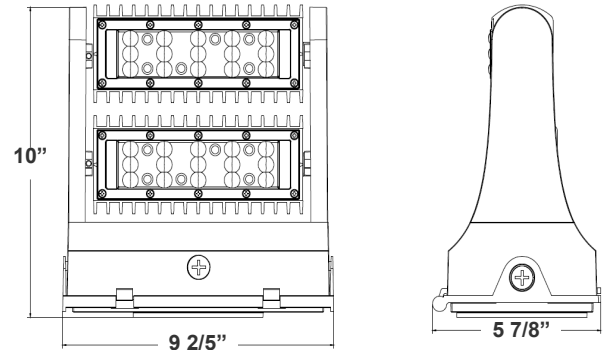
LW360 SERIES Outdoor Lighting

LW360-60W-30K-G2
LW360-60W-40K-G2
LW360-60W-50K-G2
LED 360° ROTATABLE WALL PACK

Customer Name: _____
Project Name: _____
Note: _____ Type: _____



Selection:



10"(H) x 9 2/5"(W) x 5 7/8"(L)

Ideal for general site lighting, alleys, loading docks, doorway, pathway, and parking areas.

Features

- Rotatable Heads (Both in 60W & 80W) With Set Screw
- Three 1/2" Threaded Knockouts: 1 Bottom. 1 On Each Side
- TIR Optic Lens - TYPE II
- Die-cast aluminum housing with powder coat finish (Dark Bronze or White)
- 7-Year Warranty

Technical Specifications

Electrical:

- Voltage: 120-277VAC 60Hz
- Wattage: 60W
- Power Factor: >0.95
- Efficacy: 130 LPW

Mechanical:

- Die-Cast Aluminum With Powder Coat Finish (Dark Bronze)
- TIR Optic Lens - TYPE II
- Includes Mounting Hardware
- Operating Temperature: -40°F -104°F
- Five 1/2" Threaded Knockouts: 1 on Each Side, 1 on The Back
- 7-Year Warranty
- IP65, Suitable for Wet Locations
- Light Head rotates 350°

Lighting:

- Chip: Lumileds LEDs
- TIR Optic Lens - TYPE II
- Dimmable: 0~10V Dimming
- Total Lumens: 7800LM
- Color Temperatures: 3000K/ 5000K
- Color Rendering Index: CRI ≥ 80
- Beam Angle: 60°
- Rated life: 70,000 Hrs

Applications:

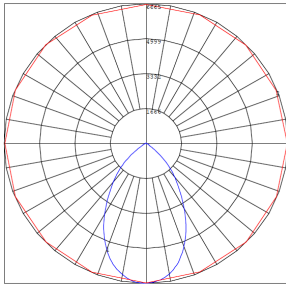
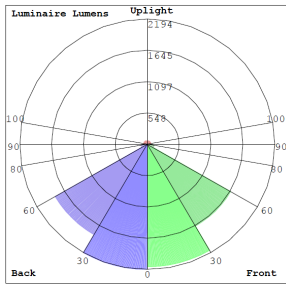
- General site Lighting
- Alleys
- Loading docks
- Doorways
- Pathways
- Parking areas

Other Models:

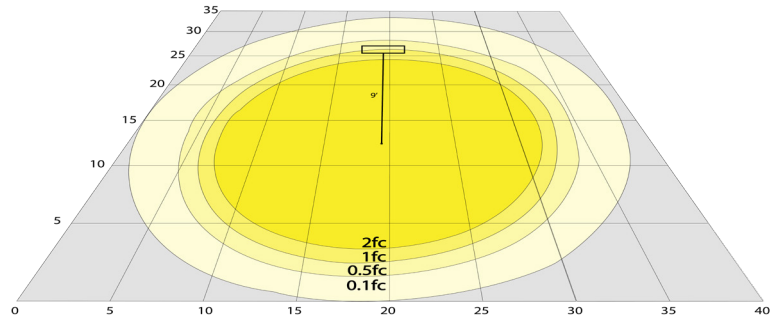
- | | | | |
|-----------------------------------|-----------------------------------|-----------------------------------|--------------------------------------|
| • 25W 3250LM LW360-25W-30K-G2 | • 40W 5200LM LW360-40W-30K-G2 | • 60W 7800LM LW360-60W-30K-G2 | • 120W 15600LM LW360-120W-30K-G2 |
| • 25W 3250LM LW360-25W-40K-G2 | • 40W 5200LM LW360-40W-40K-G2 | • 60W 7800LM LW360-60W-40K-G2 | • 120W 15600LM LW360-120W-40K-G2 |
| • 25W 3250LM LW360-25W-50K-G2 | • 40W 5200LM LW360-40W-50K-G2 | • 60W 7800LM LW360-60W-50K-G2 | • 120W 15600LM LW360-120W-50K-G2 |



Photometrics: LW360-60W



BUG Rating: B3-U3-G1



Area 35'x 40' Mounting Height: 9'

Other Views:



Side View



Front View



Back View

Performance Table: LW360-60W

MODEL NO.	Wattage	Voltage	Lumens	Color Temp.	BUG Rating	LPW
LW360-60W-30K-G2	60W	120~277V	7800LM	3000K	B3-U3-G1	130
LW360-60W-40K-G2	60W	120~277V	7800LM	4000K	B3-U3-G1	130
LW360-60W-50K-G2	60W	120~277V	7800LM	5000K	B3-U3-G1	130

Sample Ordering

Model **Wattage** **Color Temp.** **Series**
 - - -
 3000K
 4000K
 5000K

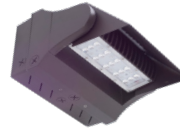
Accessory:

Blank = No Option For Accessories
 LW360-SH1= SHROUD FOR LW360 SERIES, BRONZE FINISH

Factory-Installed Options:

Blank = No Option For Accessories
 OPT-EM-LW360= EMERGENCY BACKUP BATTERY, BACK BOX
 OPT-SEN-LW360-3MRLV-5= PROGRAMMABLE MICROWAVE BI-LEVEL
 OPT-CLR-85= COLOR PAINT
 OPT-LW360-PC-B = PHOTOCELL 120-277V
 WEC-8RC = OPTIONAL REMOTE

ACCESSORY:



LW360-SH1
 SHOWN WITH EM BOX

FACTORY-INSTALLED OPTIONS:



OPT-EM-LW360
 SHOWN WITH MOTION SENSOR



OPT-SEN-LW360-3MRLV-5



WEC-8RC



OPT-LW360-PC-B



OPT-CLR-85

Example:

- LW360-60W-30K-G2
- LW360-60W-30K-G2
LW360-SH1
- LW360-60W-30K-G2
LW360-SH1
OPT-EM-LW360

(FOR LW360 60W 3000K FIXTURE 120-277V)

(FOR LW360 60W 3000K FIXTURE 120-277V)
 (SHROUD FOR LW360 SERIES, BRONZE FINISH)

(FOR LW360 60W 3000K FIXTURE 120-277V)
 (SHROUD FOR LW360 SERIES, BRONZE FINISH)
 (EMERGENCY BACKUP BATTERY, BACK BOX)

