

RDL SERIES RESIDENTIAL LIGHTING

RDL4-ST-MCT5-ORB
4" Smooth Recessed Trim

Customer Name: _____

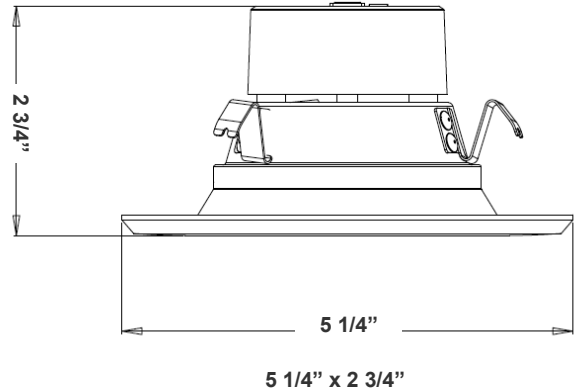
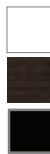
Project Name: _____

Note: _____ Type: _____



MCT5

Selection:



Features

- 4" Smooth Recessed Trim
- Multi CCT (Selectable Switch on the Back of the driver)
- Isolated Driver for Improved Thermal Management
- 5-Year Warranty
- Spun Aluminum with White Powder Coat Finish

Technical Specifications

Electrical:

- Voltage: 120V AC
- Output Voltage: 36VDC
- Power Factor: >0.90
- Wattage: 10W
- Efficacy: 70 LPW
- Total Harmonic Distortion: ≤15 %

Mechanical:

- Spun Aluminum with White Powder Coat Finish
- Includes 8" Medium Base E-26 Screw-in Adapter That Fits any Standard Incandescent Down-light
- Maximum Ambient Temperature: 104°F
- Fits in Standard 4" Recessed Housings
- Rated life: 50,000 hrs
- Damp Location

Lighting:

- Dimming: TRIAC Dimming (Using Standard TRIAC LED Dimmers)
- LED: Epistar Chip (COB) and Driver—35,000-hour Design Life
- Can Rotate after Installation to Align
- Optics: White Translucent Acrylic Lens
- Total Lumens: 700 LM
- Multi Color Temperatures: 2700K/ 3000K/ 3500K/ 4000K/ 5000K
- Multi CCT (Selectable Switch on the Back of the Driver)
- Color Rendering Index: CRI ≥ 90

Applications:

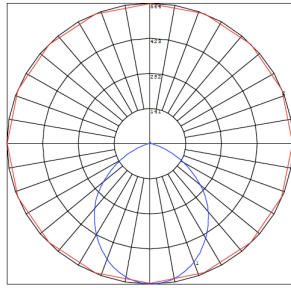
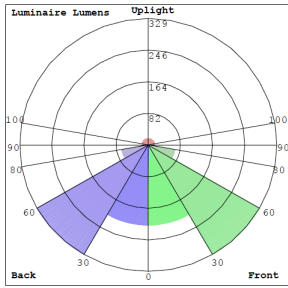
- LED retrofit trim have been designed to be a flexible lighting solution for retrofit and new construction applications, Ideal for closets, storage areas, attics, corridors, or general lighting solutions for residential and commercial applications

Other Models:

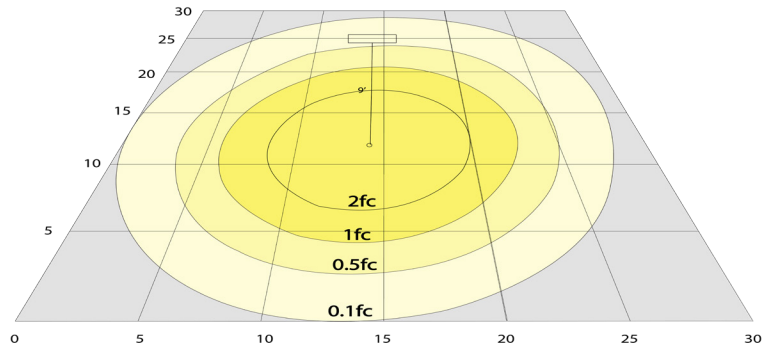
- 15W | 1275LM | RDL6-ST-MCT5-ORB



Photometrics: RDL4-ST-MCT5-ORB



BUG Rating: B1-U2-G0



Area 30'x 30' Mounting Height: 9'

Other Views:



Side View



Front View



Back View

Performance Table: RDL4-ST-MCT5-ORB

| MODEL NO. | Wattage | Voltage | Lumens | Color Temp. | BUG Rating | LPW |
|------------------|---------|---------|--------|-------------------------------|------------|-----|
| RDL4-ST-MCT5-ORB | 10W | 120V | 700LM | 2700K/3000K/3500K/4000K/5000K | B1-U2-G0 | 70 |

Sample Ordering

| Model | Style | Color Temp. | Housing |
|-------|-------|-------------|---------|
| RDL4 | ST | MCT5 | ORB |

Accessories:

Blank = No Option For Accessories

RDL4-BF-TRMB-BK = RDL4-BF SERIES COLOR TRIM, BAFFLE BLACK
 RDL4-BF-TRMB-BN = RDL4-BF SERIES COLOR TRIM, BAFFLE BRUSHED NICKEL
 RDL4-BF-TRMB-ORB = RDL4-BF SERIES COLOR TRIM, BAFFLE OIL-RUBBED BRONZE
 RDL4-BF-TRMB-WH = RDL4-BF SERIES COLOR TRIM, BAFFLE WHITE
 RDL4-BF-TRMS-BK = RDL4-BF SERIES COLOR TRIM, SMOOTH BLACK
 RDL4-BF-TRMS-BN = RDL4-BF SERIES COLOR TRIM, SMOOTH BRUSHED NICKEL
 RDL4-BF-TRMS-ORB = RDL4-BF SERIES COLOR TRIM, SMOOTH OIL-RUBBED BRONZE
 RDL4-BF-TRMS-WH = RDL4-BF SERIES COLOR TRIM, SMOOTH WHITE
 E26-CONVERTER = SCREW-IN ADAPTER THAT FITS ANY STANDARD

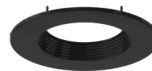
Factory-installed Option:

Blank = No Option For Accessories
 OPT-EM-DL1EXT = EXTERNAL BATTERY BACKUP

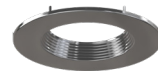
ACCESSORY:



RDL4-BF-TRMB-WH
RDL4-BF SERIES COLOR TRIM, BAFFLE-WHITE



RDL4-BF-TRMB-BK
RDL4-BF SERIES COLOR TRIM, BAFFLE-BLACK



RDL4-BF-TRMB-BN
RDL4-BF SERIES COLOR TRIM, BAFFLE-SMOOTH BRUSHED NICKEL



RDL4-BF-TRMB-ORB
RDL4-BF SERIES COLOR TRIM, BAFFLE-OIL-RUBBED BRONZE



RDL4-ST-TRMS-WH
RDL4-BF SERIES COLOR TRIM, SMOOTH-WHITE



RDL4-ST-TRMS-BK
RDL4-BF SERIES COLOR TRIM, SMOOTH-BLACK



RDL4-ST-TRMS-BN
RDL4-BF SERIES COLOR TRIM, SMOOTH-BRUSHED NICKEL



RDL4-ST-TRMS-ORB
RDL4-BF SERIES COLOR TRIM, SMOOTH-OIL-RUBBED BRONZE



E26-CONVERTER
Includes Medium Base E-26 Screw-in Adapter That Fits Any Standard

FACTORY-INSTALLED OPTION:



OPT-EM-DL1EXT
EXTERNAL BATTERY BACKUP

Example:

- RDL4-ST-MCT5-ORB (FOR RDL4 10W MCT5 FIXTURE 120V)
- RDL4-ST-MCT5-ORB OPT-EM-DL1EXT (FOR RDL4 10W MCT5 FIXTURE 120V) (EXTERNAL BATTERY BACKUP)



Compatible Dimmer List:

| MODEL NO. | BRAND | MODEL NO. | BRAND |
|---|---------|---|---------|
| LUXDM600-12 600W | ALMOND | S-600-IV 600W | LUTRON |
| SDM3/1000/WHTTE 1000W | AH | S-600-AL 600W | LUTRON |
| SDM/600/WHTTE 600W | AH | D-600R-IV 600W | LUTRON |
| 18024 600W | GE | DV-603PH-WH 600W | LUTRON |
| 6683 600W | LEVITON | S-603PH-WH 600W | LUTRON |
| 6631-LA 600W | LEVITON | AY-600P-WH | LUTRON |
| LIGHT ALMOND NO.6672 600W | LEVITON | AYCL-153PH | LUTRON |
| 603-6631-A 600W | LEVITON | SELV-300P-WH | LUTRON |
| 6631-A 600W | LEVITON | DV-600P-WH | LUTRON |
| White/Lvory/Light Almond IPI10-1LZ 600W | LEVITON | SCL-153PH-WH | LUTRON |
| DV-603P600W | LUTRON | MACL-153MH-WH | LUTRON |
| S-600 600W | LUTRON | DVCL-253PH | LUTRON |
| DV-603PH-WH 600W | LUTRON | MSCL-OP153MH-WH | LUTRON |
| DV-600PH-WH 600W | LUTRON | MACL-153MLH-WH | LUTRON |
| S-603PGH-WH 600W | LUTRON | 6683 600W | LEVITON |
| S-10PH 1000W | LUTRON | 6631-LA 600W | LEVITON |
| D-600RH-DK 600W | LUTRON | LIGHT ALMOND NO.6672 600W | LEVITON |
| TG-600PH-WH 600W | LUTRON | 603-6631-A 600W | LEVITON |
| SCL-153P-WH 600W | LUTRON | 6631-A 600W | LEVITON |
| D-600R-WH 600W | LUTRON | White/Lvory/Light Almond IPI10-1LZ 600W | LEVITON |

