

# 200W LED UFO High Bay Light



## Features

- Lumileds LED, high luminous efficiency and long working life.
- Unisolated power supply LED Driver, the wide range input voltage AC100-277V.
- Die Cast aluminium cooling design, high quality and better cooling for LED  $T_j < 85^\circ\text{C}$ .
- Excellent Optics design, greatly improve the light utilization and evenness.
- Motion sensor Control Available (Option).

## Product Applications

WSD LED INC UFO LED High Bay Light series can be widely used in outdoor lighting (Wet location), Excellent for Museums, Art Galleries, Underground parking lot, Buildings, Industrial areas, Residential areas, Parking lot, Schools and etc, and many more applications.

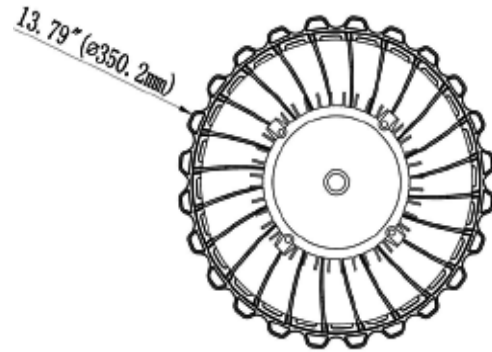
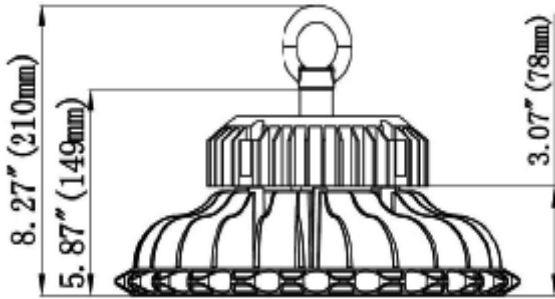


## Specifications

Unit : inch(mm)

### Structure Features

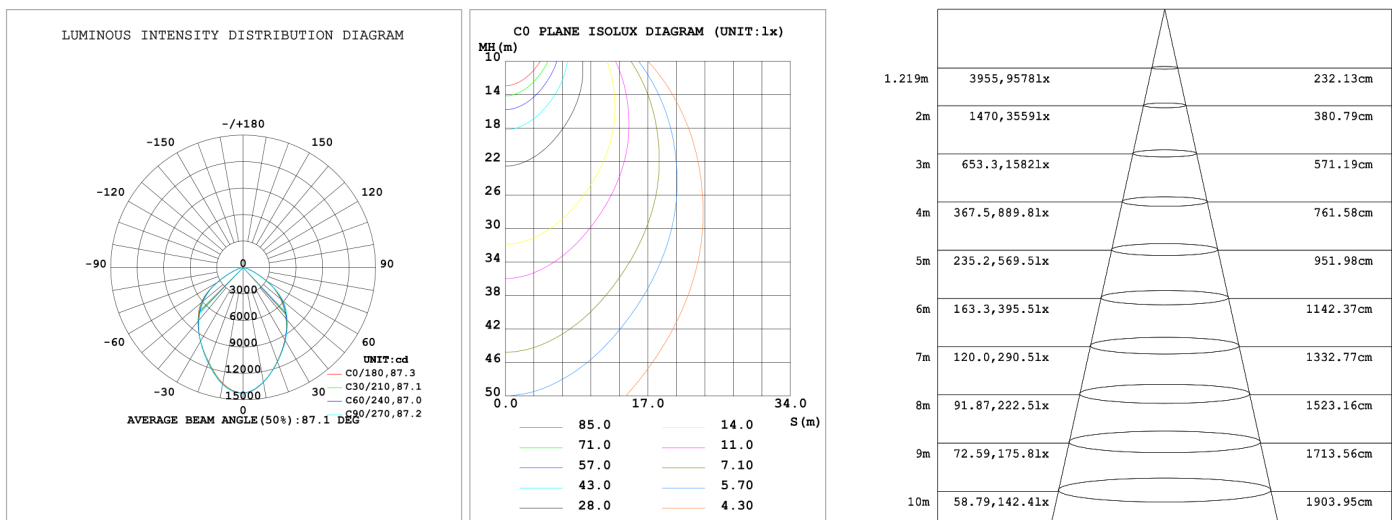
- Shell materials: Aluminum & PC.
- Finish: Black/White
- Net weight : 5.0Kg (11 lbs)
- Product Size:  $\phi$ 350mm\*210mm
- Carton Size:410mm\*410mm\*180mm



## Technical Parameters

WSD-UFO20W27-XXK-Z-E			
Power	200W	Lighting Angle	87°
Input Voltage	AC100-277V	LED Brightness Decay	<5%/6000 hrs
PF	>0.95	Working Life	>50000 hrs
Driver Efficiency	>90%	Working Temperature	-30 - +45°C
Luminous Flux	27200 Lm	Storage Temperature	-40 - +80°C
Color Temperature	4000K/5000K	Protection Level	Wet Location
CRI	Ra>80	Cable	3 core , 18AWG(1.0m)
Dimming function	1-10Vdc 12V Auxiliary power	Eff	≥130lm/W

## Photometry



### Example: WSD-UFO20W27-XXK-Z[D,W,B,S]-E[Blank,M]

WSD	UFO	20W	27	XXK	Z	E
Company	Product	Power	Voltage	Color Temp	Finish	Control
WSD LED INC	UFO High Bay Light	20W(200W)	AC100-277V	40K(4000K)	D (Dark Bronze)	M
				50K(5000K)±500K	B (Black)	Motion sensor
					W(White)	
					S(Silvery)	

## Options Information:

### Option Sensor: ANT-5-3



On/off control



Daylight sensor



Detection area



Stand-by period



Hold-time



Stand-by dimming level

Operating voltage 12-24Vdc

Microwave frequency 5.8 GHz  $\pm$ 75 MHz

Mounting height 50FT(15m) Max

Detection radius 20%/50%/75%/100%(1-8m)

Dim control output 0-10V

Temperature -4°F~+140°F(-20°C ~+60°C)

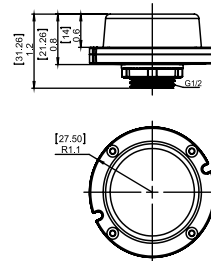
### Option Sensor: ANT-5-3



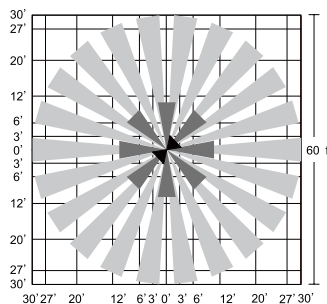
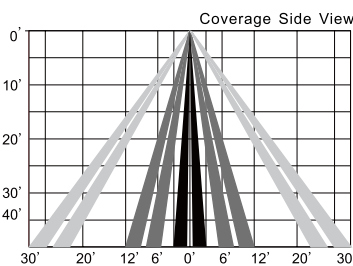
ANT-5-3



RC-100



### SENSOR COVERAGE



### WIRING DIAGRAMS

