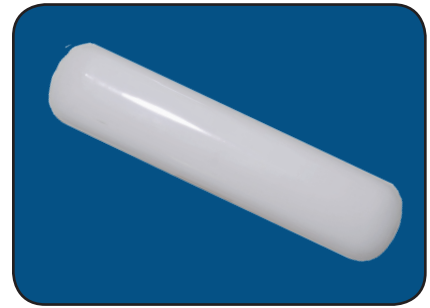


WPU Series

Wall Puff Linear Fixture



FEATURES & SPECIFICATIONS

INTENDED USE

The Reverse Bath Bar diffusers can be used with a standard 2-Lite strip fixture, to provide an economical, energy efficient, yet contemporary luminaire.

SIZE W x L x H in inches (mm)

WPU220 - 6.0" x 27.0" x 2.75"

WPU230 - 6.0" x 39.0" x 2.75"

WPU240 - 6.0" x 51.0" x 2.75"

LAMP

1 or 2 lamp positions

CONSTRUCTION

All metal parts die formed from heavy gauge cold roll steel housing to insure uniformity and dimensional stability.

ELECTRICAL

Unless otherwise specified, ballasts are rapid start, class "P" thermally protected, H.P.F., CBM-ETL. Optional ballasts available include: energy saving (ESB), electronic (ELB), dimming (DIM), low temperature (CW). Standard voltage on all fixtures is 120V 60HZ AC, or as specified. Sufficient knockouts are provided on the back for all connections and through wiring.

DIFFUSER

One piece 100% acrylic for a fully luminous light source.

LISTING

Fixture & Ballast: UL Listed

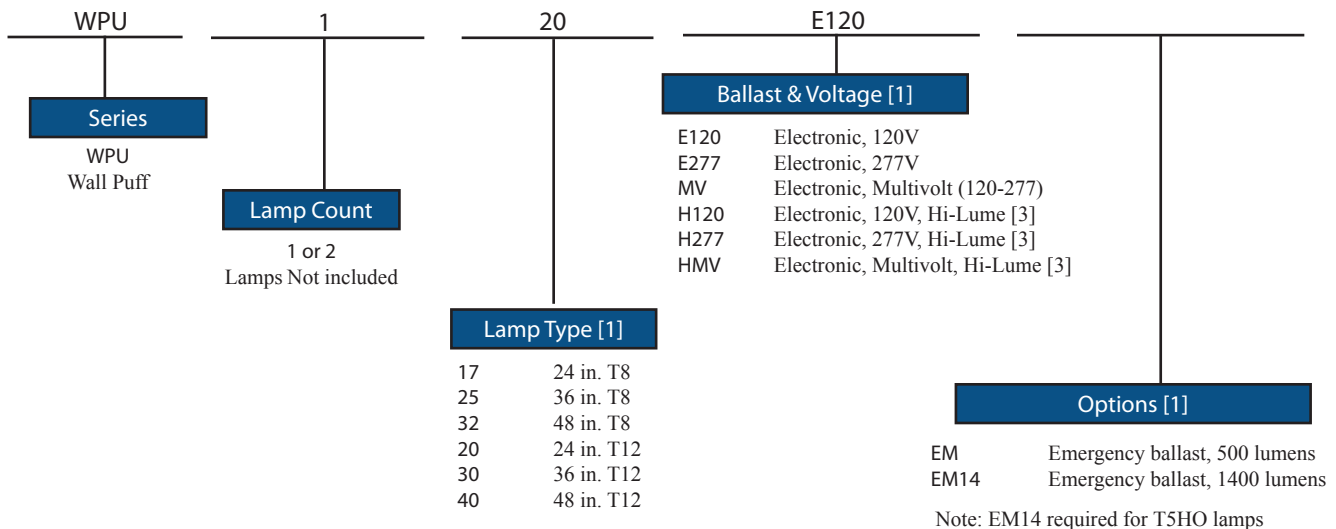
Ballast: Thermally protected, class P, HPF, Non PCB

TYPICAL OPTIONS AND ACCESSORIES

Emergency ballasts, Cord sets, whips, occupancy sensors Hanging kits, Wire guards. Contact factory for additional options.

ORDERING INFORMATION

Example: WPU120E120



Notes

[1] See end of T02WALL for many additional lamps, ballasts, finishes, and options.

[2] Custom louvers available in any cell configuration. Consult factory for additional information.

[3] HiLume and LoLume ballasts available for T8 lamps only.

Texas Fluorescents

2055 Luna Rd. Suite 142 Carrollton, TX 75006

Phone: 972-247-3171 Fax: 972-247-0200

www.texasfluorescents.com email: sales@texasfluorescents.com

Catalog Number:

Notes:

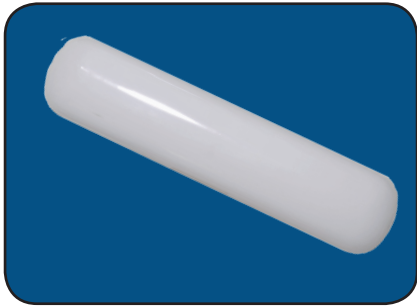
WPU Series

Wall Puff Linear Fixture



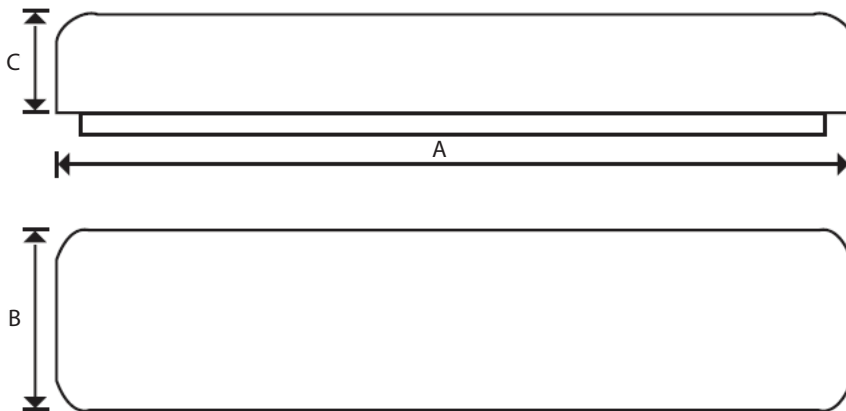
T E X A S

F L U O R E S C E N T S



DIMENSIONS

All dimensions are inches. Specifications subject to change without notice.



Series	A	B	C
WPU220	27"	6"	2.75"
WPU230	39"	6"	2.75"
WPU240	51"	6"	2.75"

Catalog Number:
Notes: